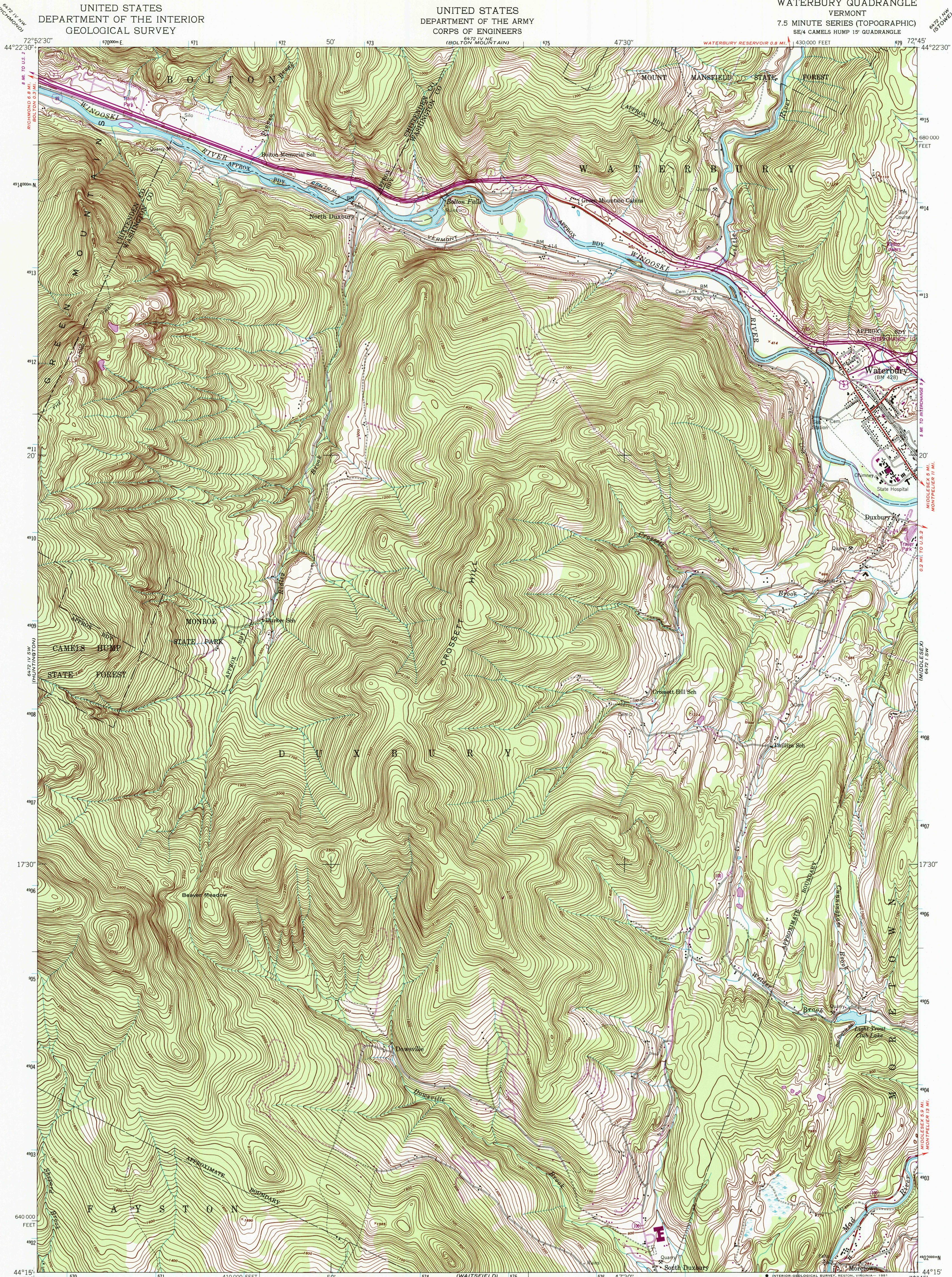


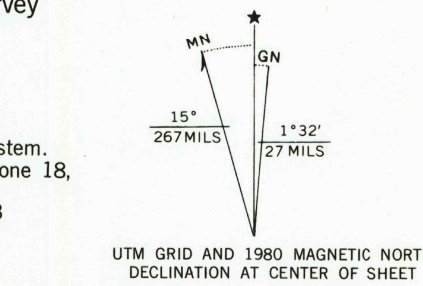
UNITED STATES  
DEPARTMENT OF THE INTERIOR  
GEOLOGICAL SURVEY

UNITED STATES  
DEPARTMENT OF THE ARMY  
CORPS OF ENGINEERS

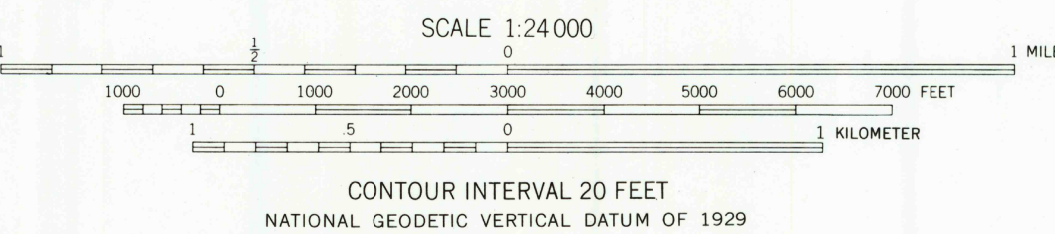
WATERBURY QUADRANGLE  
VERMONT  
7.5 MINUTE SERIES (TOPOGRAPHIC)  
SE/4 CAMELS HUMP 15' QUADRANGLE



Mapped by the Defense Mapping Agency  
Published for civil use by the Geological Survey  
Control by USGS, NOS/NOAA, and USCE  
Topography by photogrammetric methods from  
aerial photographs taken 1947. Field checked 1948  
Polyconic projection  
10,000-foot grid ticks based on Vermont coordinate system,  
1000-meter Universal Transverse Mercator grid ticks, zone 18,  
shown in blue. 1927 North American Datum  
To place on the predicted North American Datum 1983  
move the projection lines 2 meters south and  
35 meters west as shown by dashed corner ticks  
No distinction is made between barns, dwellings,  
commercial and industrial buildings  
The Long Trail shown in approximate location  
There may be private inholdings within the boundaries  
of the National or State reservations shown on this map



Revisions shown in purple compiled by the Geological Survey  
from photographs taken 1978. This information not  
field checked. Map edited 1980



THIS MAP COMPLIES WITH NATIONAL MAP ACCURACY STANDARDS  
FOR SALE BY U. S. GEOLOGICAL SURVEY, RESTON, VIRGINIA 22092  
A FOLDER DESCRIBING TOPOGRAPHIC MAPS AND SYMBOLS IS AVAILABLE ON REQUEST



QUADRANGLE LOCATION

ROAD CLASSIFICATION  
Primary highway, all weather, hard surface  
Secondary highway, all weather, hard surface  
Light-duty road, all weather, improved surface  
Unimproved road, fair or dry weather  
Interstate Route  
U. S. Route  
State Route

WATERBURY, VT.  
SE/4 CAMELS HUMP 15' QUADRANGLE  
N4415-W7245/7.5

1948  
PHOTOREVISED 1980  
DMA 6472 IV SE-SERIES V813