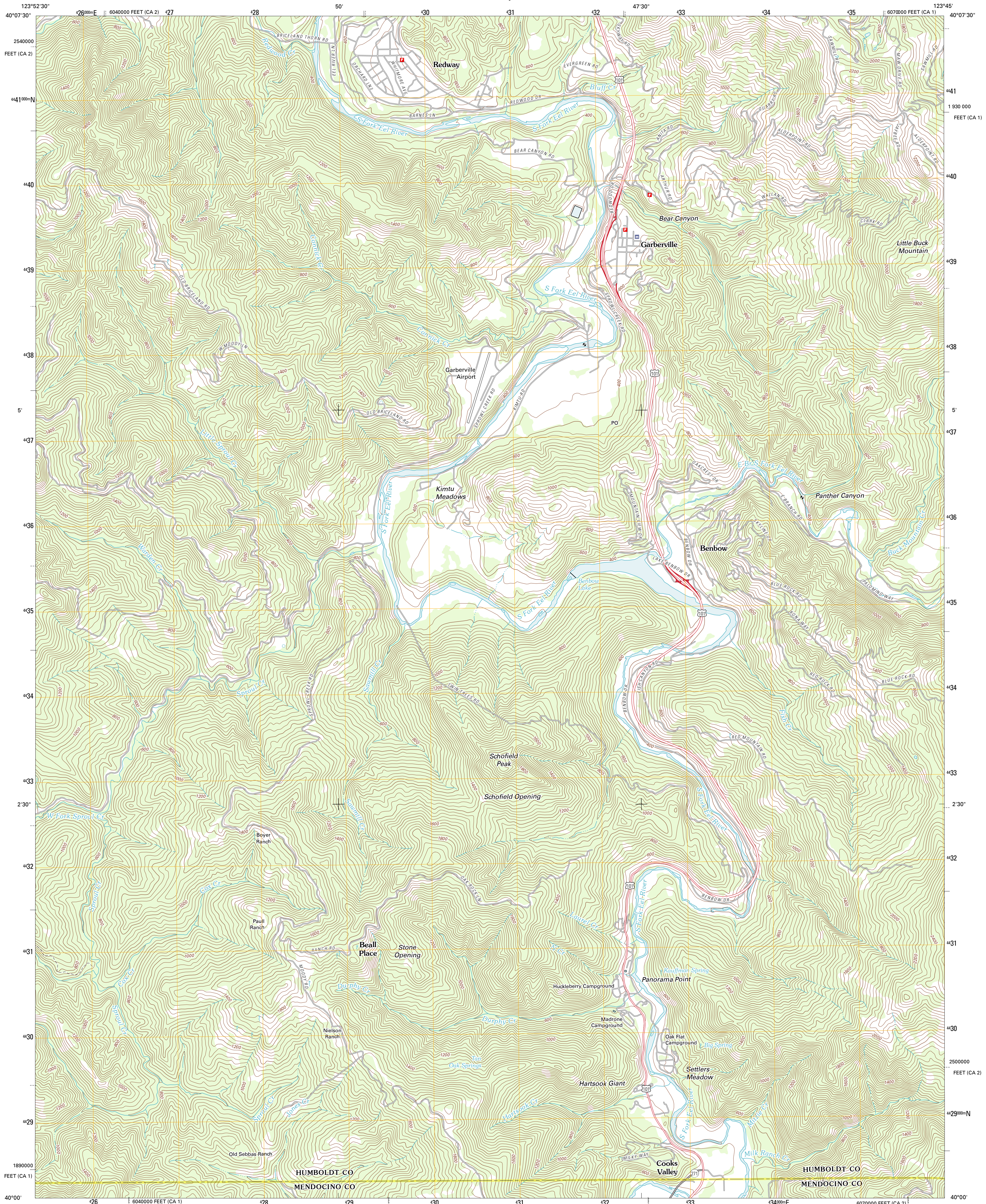




U.S. DEPARTMENT OF THE INTERIOR
U. S. GEOLOGICAL SURVEY



GARBERVILLE QUADRANGLE
CALIFORNIA
7.5-MINUTE SERIES



Produced by the United States Geological Survey
North American Datum of 1983 (NAD83)
World Geodetic System of 1984 (WGS84) Projection and
1 000-meter grid: Universal Transverse Mercator, Zone 10T
10 000-foot ticks: California Coordinate System of 1983
(zones 1 and 2)

Imagery.....NAIP, June 2010
Roads.....©2006-2011 TomTom
Names.....©2011
Hydrography.....National Hydrography Dataset, 2010
Contours.....National Elevation Dataset, 1999
Boundaries.....Census, IBWC, IBC, USGS, 1972 - 2010

UTM GRID AND 2012 MAGNETIC NORTH
DECLINATION AT CENTER OF SHEET

U.S. National Grid
100,000m Square ID
DK
Grid Zone Designation
10T

SCALE 1:24 000

1 000 500 0 500 1000 2000
KILOMETERS
1 000 500 0 500 1000 2000
METERS
1 000 0 1000 2000 3000 4000 5000 6000 7000 8000 9000 10000
MILES
FEET

CONTOUR INTERVAL 40 FEET
NORTH AMERICAN VERTICAL DATUM OF 1988

This map was produced to conform with the
National Geospatial Program US Topo Product Standard, 2011.
A metadata file associated with this product is draft version 0.6.1



QUADRANGLE LOCATION		
Ellettsburg	Miranda	Fort Seward
Briceland	Garberville	Harris
Bear Harbor	Piercy	Noble Butte

ROAD CLASSIFICATION

Interstate Route
US Route
Ramp

State Route
Local Road
4WD

Interstate Route
US Route
State Route

GARBERVILLE, CA
2012