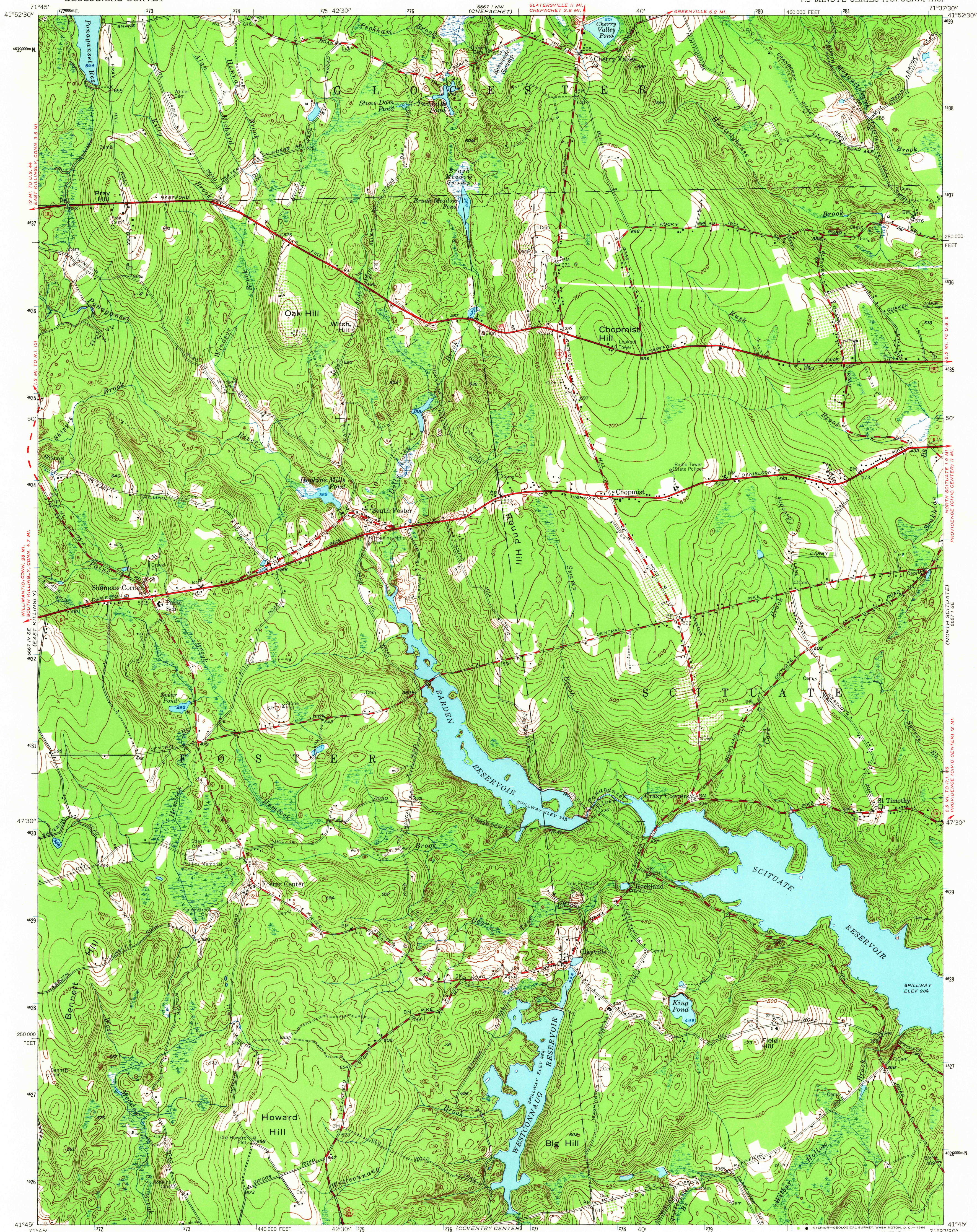
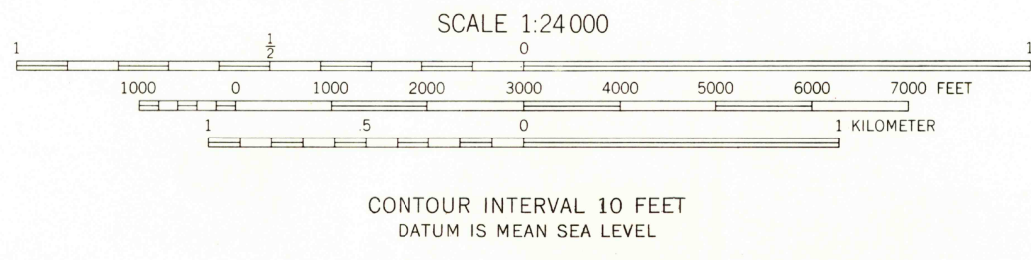
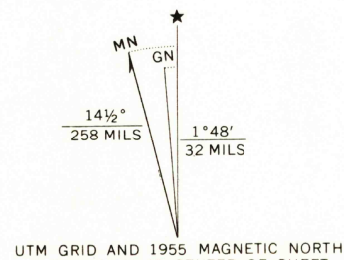


UNITED STATES  
DEPARTMENT OF THE INTERIOR  
GEOLOGICAL SURVEY

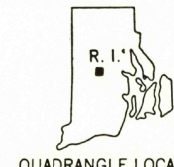
CLAYVILLE QUADRANGLE  
RHODE ISLAND—PROVIDENCE CO.  
7.5 MINUTE SERIES (TOPOGRAPHIC)



Mapped, edited, and published by the Geological Survey  
Control by USGS and USC&GS  
Topography by planetable surveys 1942-1943  
Revised 1955  
Polyconic projection. 1927 North American datum  
10,000-foot grid based on Rhode Island coordinate system  
1,000-meter Universal Transverse Mercator grid ticks,  
zone 19, shown in blue



USGS  
HISTORICAL FILE  
TOPOGRAPHIC DIVISION



U.S.G.S.  
TOPOGRAPHIC DIVISION

CLAYVILLE, R. I.  
N 4145-W 7137.5/7.5

1955

AMS 6667 I SW-SERIES V815

THIS MAP COMPLIES WITH NATIONAL MAP ACCURACY STANDARDS  
FOR SALE BY U. S. GEOLOGICAL SURVEY, WASHINGTON, D. C. 20242  
A FOLDER DESCRIBING TOPOGRAPHIC MAPS AND SYMBOLS IS AVAILABLE ON REQUEST

3 155  
JUL 14 1956