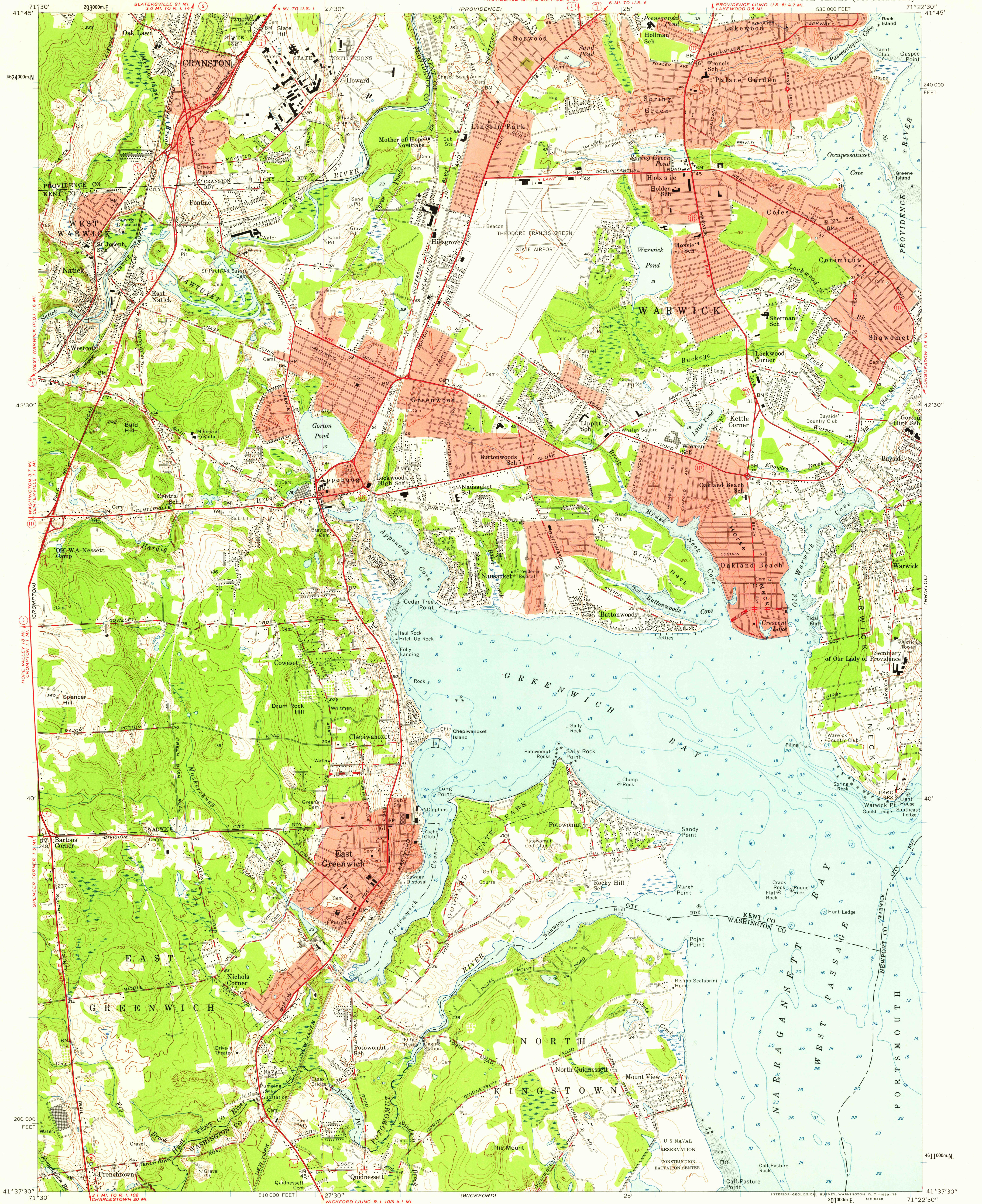


UNITED STATES
DEPARTMENT OF THE INTERIOR
GEOLOGICAL SURVEY

EAST GREENWICH QUADRANGLE
RHODE ISLAND
7.5 MINUTE SERIES (TOPOGRAPHIC)

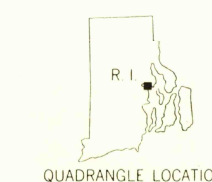


Maped, edited, and published by the Geological Survey
Control by USGS, USC&GS, and USCE
Topography by planetable surveys 1942
Culture revised by Kelsch plotter from aerial
photographs taken 1955. Field check 1957
Hydrography compiled from USC&GS chart 278 (1954)
Polyconic projection. 1927 North American datum
10,000-foot grid based on Rhode Island coordinate system
1000-meter Universal Transverse Mercator grid ticks,
zone 19, shown in blue
Red tint indicates areas in which only
landmark buildings are shown

APPROXIMATE MEAN
DECLINATION, 1957

SCALE 1:24000
1 0 1000 2000 3000 4000 5000 6000 7000 FEET
1 0 1 2 3 4 5 6 7 8 9 10 KILOMETER
CONTOUR INTERVAL 10 FEET
DATUM IS MEAN SEA LEVEL
DEPTH CURVES AND SOUNDINGS IN FEET—DATUM IS MEAN LOW WATER
SHORELINE SHOWN REPRESENTS THE APPROXIMATE LINE OF MEAN HIGH WATER
THE MEAN RANGE OF TIDE IS APPROXIMATELY 4.4 FEET

USGS
HISTORICAL FILE
TOPOGRAPHIC DIVISION
ROAD CLASSIFICATION
Heavy-duty ——— Light-duty ———
Medium-duty ——— Unimproved dirt ———
U.S. Route ——— State Route ———



U.S.G.S.
FILE COPY
TOPOGRAPHIC DIVISION

EAST GREENWICH, R. I.
N4137.5—W7122.5/7.5

1957

FEB 1 1959

4850