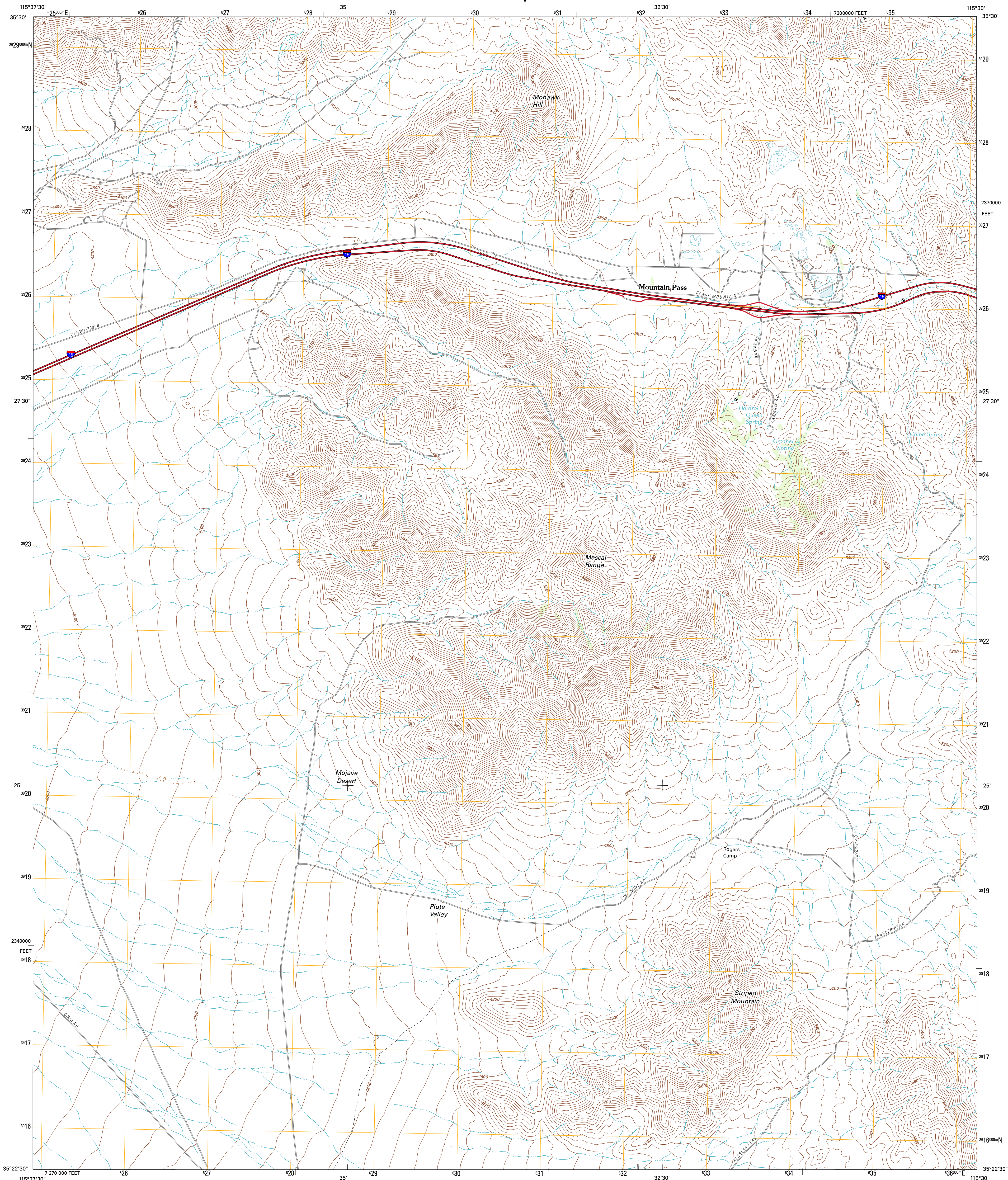




U.S. DEPARTMENT OF THE INTERIOR
U. S. GEOLOGICAL SURVEY



MESCAL RANGE QUADRANGLE
CALIFORNIA-SAN BERNARDINO CO.
7.5-MINUTE SERIES



Produced by the United States Geological Survey
North American Datum of 1983 (NAD83)
World Geodetic System of 1984 (WGS84). Projection and
1 000-meter grid: Universal Transverse Mercator, Zone 11S
10 000-foot ticks: California Coordinate System of 1983
(zone 5)

Imagery.....NAIP, May 2010 - June 2010
Roads.....©2006-2011 TomTom
Names.....GNIS, 2011
Hydrography.....National Hydrography Dataset, 2010
Contours.....National Elevation Dataset, 2006
Boundaries.....Census, BWC, BIC, USGS, 1972 - 2010

UTM GRID AND 2012 MAGNETIC NORTH
DECLINATION AT CENTER OF SHEET

U.S. National Grid
100,000-m Square ID
PV
Grid Zone Designation
11S

SCALE 1:24 000

1 0.5 0 0.5 1 KILOMETERS
1000 500 0 500 1000 METERS
1 0.5 0 0.5 1 MILES
1000 0 1000 2000 3000 4000 5000 6000 7000 8000 9000 10000 FEET

CONTOUR INTERVAL 40 FEET
NORTH AMERICAN VERTICAL DATUM OF 1988

This map was produced to conform with the
National Geospatial Program US Topo Product Standard, 2011.
A metadata file associated with this product is draft version 0.6.1



QUADRANGLE LOCATION		
Pachaka Spring	Clark Mountain	Ivanpah Lake
Valley Wells	Mescal Range	Mineral Hill
Cow Cove	Cima Dome	Joshua

ROAD CLASSIFICATION

Interstate Route
US Route
Ramp

State Route
Local Road
4WD

MESCAL RANGE, CA
2012