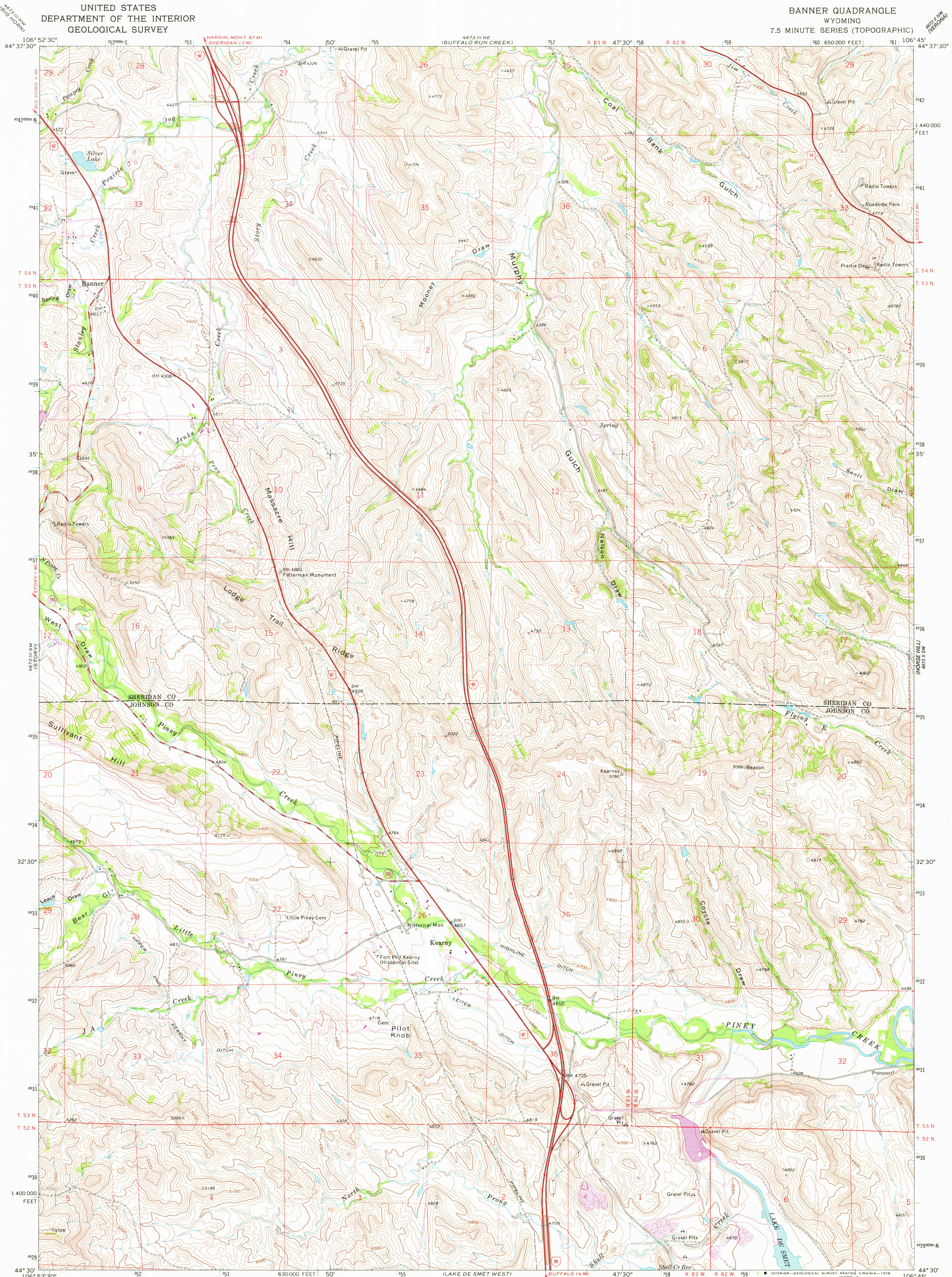


UNITED STATES
DEPARTMENT OF THE INTERIOR
GEOLOGICAL SURVEY

BANNER QUADRANGLE
WYOMING
7.5 MINUTE SERIES (TOPOGRAPHIC)



Mapped, edited, and published by the Geological Survey

Control by USGS and NOS/NOAA

Topography by photogrammetric methods from aerial photographs taken 1966. Field checked 1967

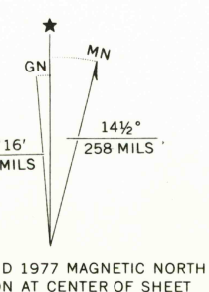
Polyconic projection. 1927 North American datum

10,000-foot grid based on Wyoming coordinate system, east central zone

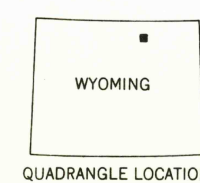
1000-meter Universal Transverse Mercator grid ticks, zone 13, shown in blue

Fine red dashed lines indicate selected fence lines

Revisions shown in purple compiled from aerial photographs taken 1976. Map edited 1977. This information not field checked



SCALE 1:24,000
CONTOUR INTERVAL 20 FEET
NATIONAL GEODETTIC VERTICAL DATUM OF 1929



ROAD CLASSIFICATION
Heavy-duty ——— Light-duty ———
Medium-duty ——— Unimproved dirt ———
Interstate Route ——— U.S. Route ———
State Route ———

USGS
Historical File
Topographic Division

BANNER, WYO.
N4430—W10645/7.5

1967
PHOTOREVISED 1977
AMS 4673 III SE—SERIES V874

MAR 16 1979