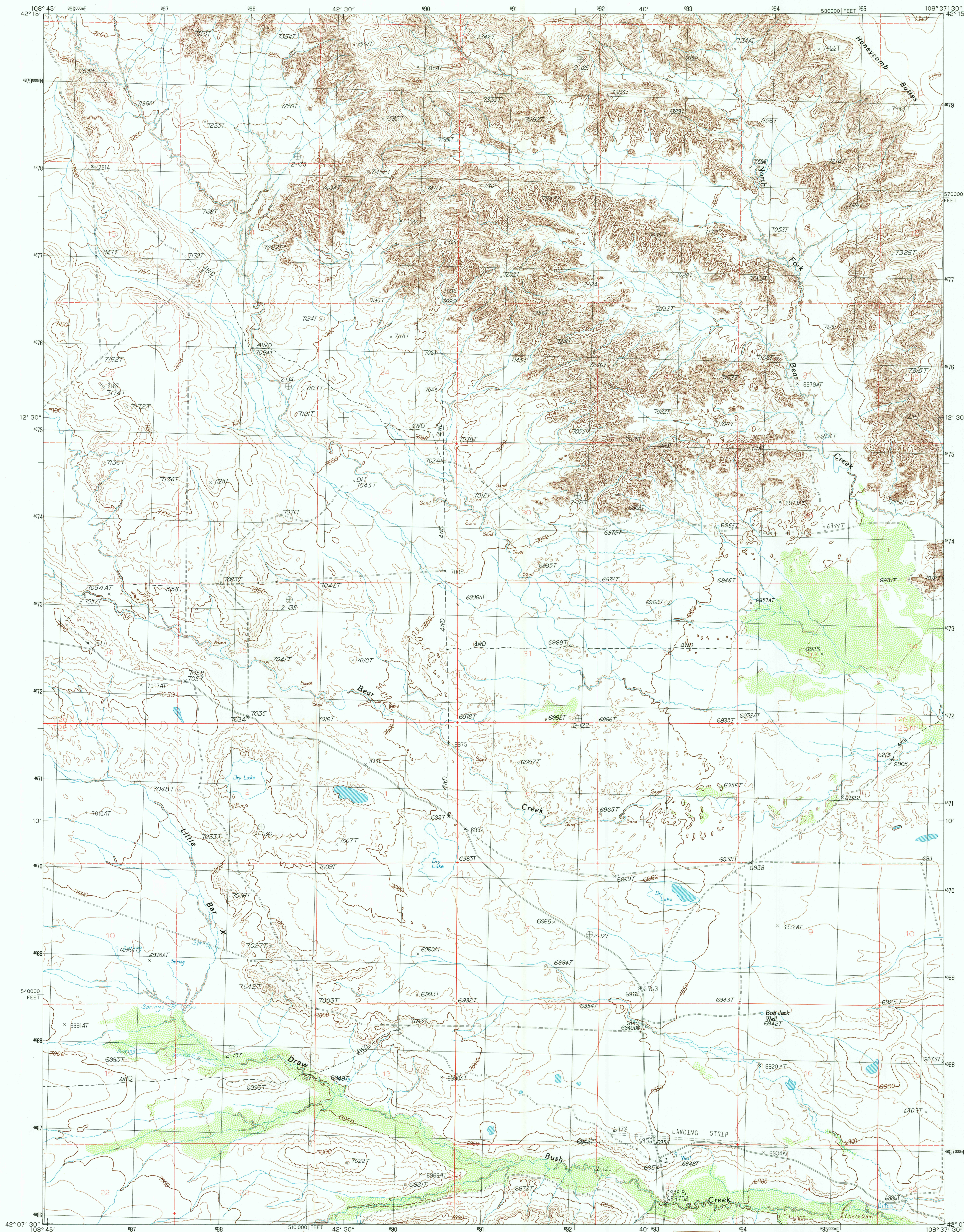


UNITED STATES
DEPARTMENT OF THE INTERIOR
GEOLOGICAL SURVEY

BOB JACK WELL QUADRANGLE
WYOMING-SWETWATER CO.
7.5 MINUTE SERIES (TOPOGRAPHIC)



PRODUCED BY THE UNITED STATES GEOLOGICAL SURVEY
CONTROL BY USGS NOS/NOAA
COMPILED FROM AERIAL PHOTOGRAPHS TAKEN 1979
FIELD CHECKED 1980 MAP EDITED 1986
PROJECTION TRANSVERSE MERCATOR
GRID: 1000-METER UNIVERSAL TRANSVERSE MERCATOR ZONE 12
10000-FOOT STATE GRID TICS - WYOMING WEST CENTRAL ZONE
UTM GRID DECLINATION 1°33' EAST
1986 MAGNETIC NORTH DECLINATION 14° EAST
VERTICAL DATUM NATIONAL GEODETIC VERTICAL DATUM OF 1989
HORIZONTAL DATUM 1927 NORTH AMERICAN DATUM
To place on the predicted North American Datum of 1983,
move the projection lines as shown by dashed corner ticks
(8 meters north and 56 meters east)
There may be private inholdings within the boundaries of any
Federal and State Reservations shown on this map
All marginal data and lettering generated and positioned by
automated type placement procedures

PROVISIONAL MAP
Produced from original
manuscript drawings. Information
shown as of date of
field check.

THIS MAP COMPLIES WITH NATIONAL MAP ACCURACY STANDARDS
FOR SALE BY U.S. GEOLOGICAL SURVEY, DENVER, COLORADO 80225
OR RESTON, VIRGINIA 22092

1	2	3
4	5	6
7	8	

1 Dickie Springs
2 Continental Peak
3 Circle Bar Lake
4 Joe Hay Rim
5 John Hay Reservoir
6 Freighters Gap
7 The Pinnacles
8 Buffalo Hump Basin

Improved Road
Unimproved Road
Trail
Interstate Route U.S. Route State Route

BOB JACK WELL, WYOMING
PROVISIONAL EDITION 1986

42108-B6-TF-024

USGS NMD HISTORICAL MAP
JUN 02 1986
REC'D FILE COPY