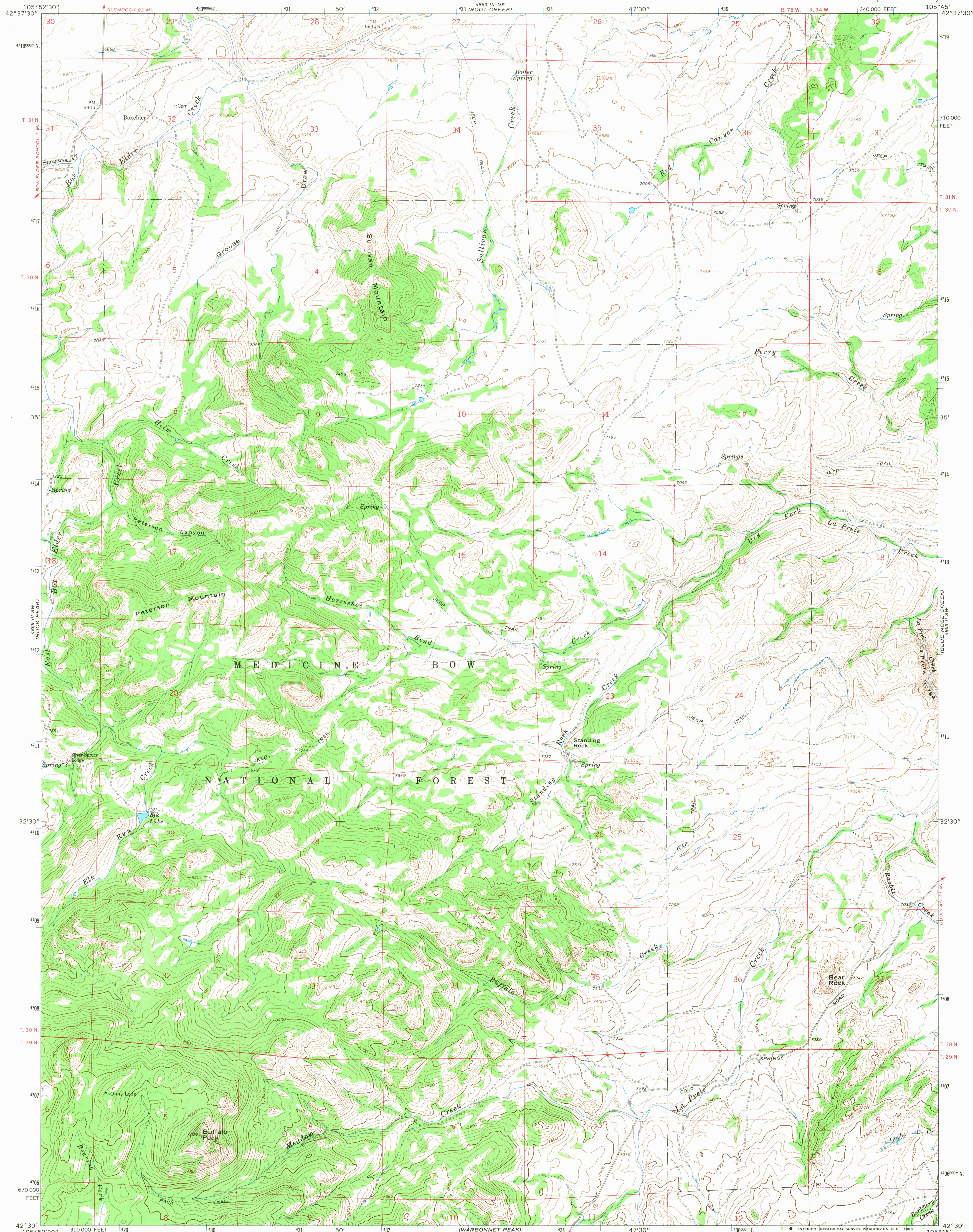
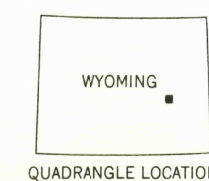
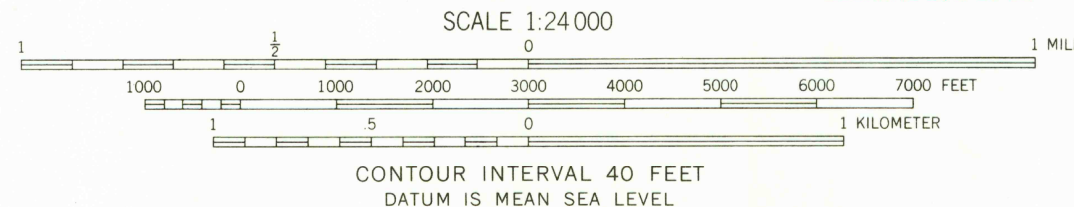
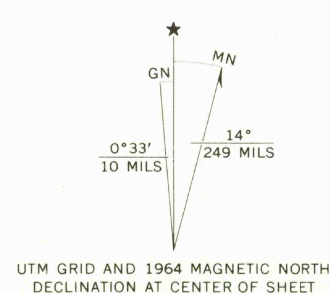


UNITED STATES
DEPARTMENT OF THE INTERIOR
GEOLOGICAL SURVEY

BUFFALO PEAK QUADRANGLE
WYOMING—CONVERSE CO.
7.5 MINUTE SERIES (TOPOGRAPHIC)



Mapped, edited, and published by the Geological Survey
Control by USGS and USC&GS
Topography by photogrammetric methods from aerial
photographs taken 1963. Field checked 1964
Polyconic projection. 1927 North American datum
10,000-foot grid based on Wyoming coordinate system,
east zone
1000-meter Universal Transverse Mercator grid ticks,
zone 13, shown blue
Fine red dashed lines indicate selected fence lines



ROAD CLASSIFICATION
Light-duty Unimproved dirt =====

BUFFALO PEAK, WYO.
N4230—W10545/7.5

1964

AMS 4869 III SE—SERIES V874

THIS MAP COMPLIES WITH NATIONAL MAP ACCURACY STANDARDS
FOR SALE BY U.S. GEOLOGICAL SURVEY, DENVER, COLORADO 80225, OR WASHINGTON, D.C. 20242
A FOLDER DESCRIBING TOPOGRAPHIC MAPS AND SYMBOLS IS AVAILABLE ON REQUEST

RETURN TO:
USGS FIELD HISTORICAL MAP ARCHIVES

U.S.G.S.
FILE COP
TOPOGRAPHIC DIVISION

2670
AUG 12 1968