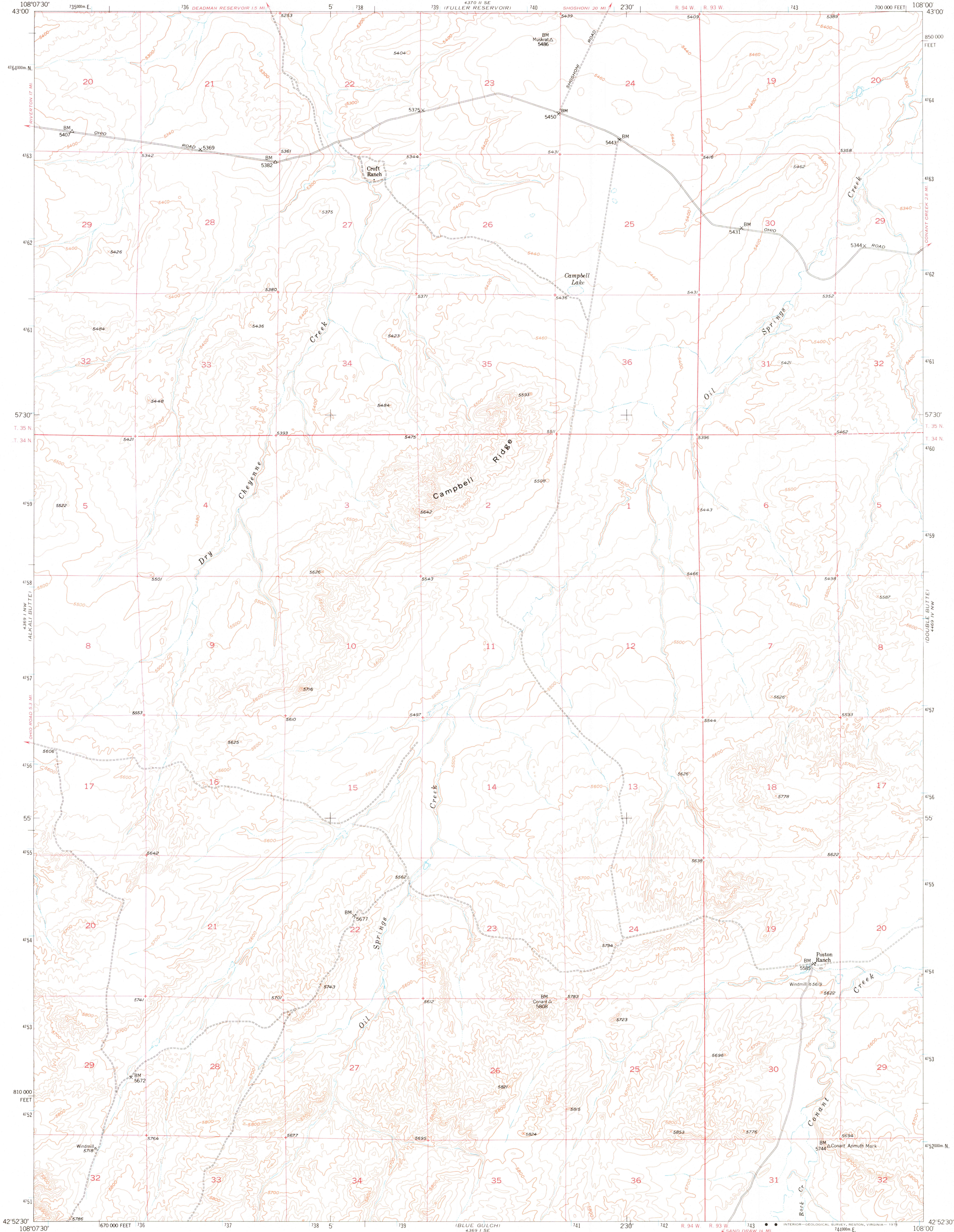
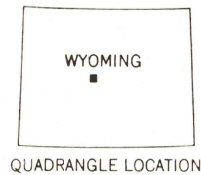
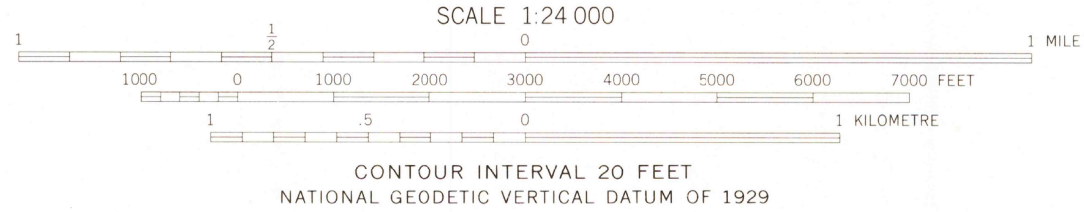
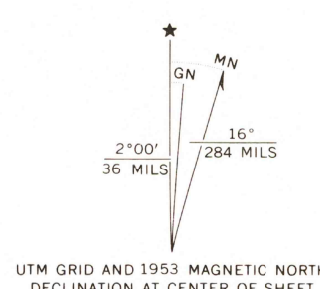


UNITED STATES
DEPARTMENT OF THE INTERIOR
GEOLOGICAL SURVEY

CAMPBELL RIDGE QUADRANGLE
WYOMING-FREMONT CO.
7.5 MINUTE SERIES (TOPOGRAPHIC)



Mapped, edited, and published by the Geological Survey
as part of the Department of the Interior program
for the development of the Missouri River Basin
Control by USGS and USC&GS
Topography from aerial photographs by multiplex methods
Aerial photographs taken 1949. Field check 1953
Polyconic projection. 1927 North American datum
10,000-foot grid based on Wyoming coordinate system,
west central zone
1000-metre Universal Transverse Mercator grid ticks,
zone 12, shown in blue
Dashed land lines indicate approximate locations



ROAD CLASSIFICATION
Heavy-duty ———— + LANE 16 LANE Light-duty ————
Medium-duty ———— + LANE 16 LANE Unimproved dirt =====
U. S. Route State Route

CAMPBELL RIDGE, WYO.
N4252.5—W10800/7.5
1953
AMS 4369 I NE-SERIES V874

THIS MAP COMPLIES WITH NATIONAL MAP ACCURACY STANDARDS
FOR SALE BY U. S. GEOLOGICAL SURVEY, DENVER, COLORADO 80225, OR RESTON, VIRGINIA 22092
A FOLDER DESCRIBING TOPOGRAPHIC MAPS AND SYMBOLS IS AVAILABLE ON REQUEST

NOV 23 1976