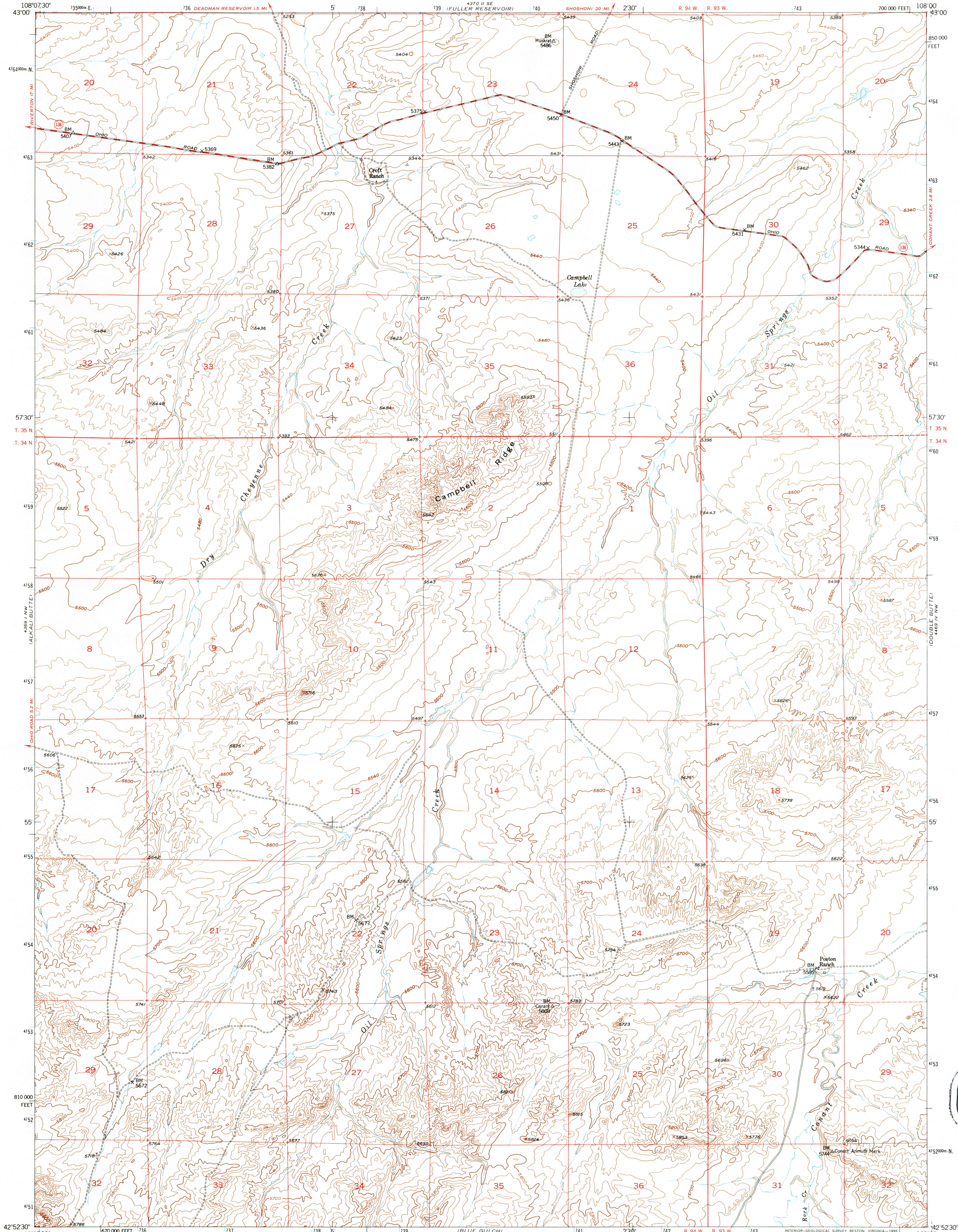
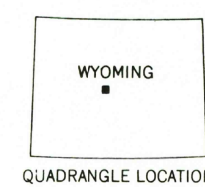
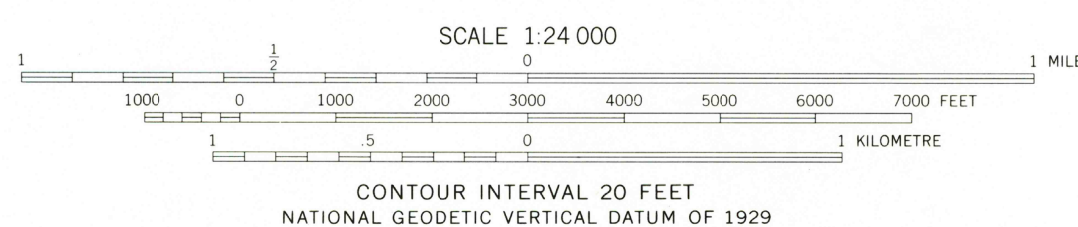
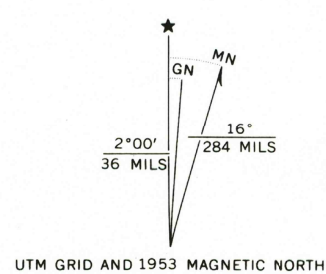


UNITED STATES
DEPARTMENT OF THE INTERIOR
GEOLOGICAL SURVEY

CAMPBELL RIDGE QUADRANGLE
WYOMING-FREMONT CO.
7.5 MINUTE SERIES (TOPOGRAPHIC)



Produced by the United States Geological Survey as part of the Department of the Interior program for the development of the Missouri River Basin
Control by USGS and NOS/NOAA
Compiled from aerial photographs taken 1949. Field checked 1953
North American Datum of 1927 (NAD 27). Projection and 10,000-foot ticks: Wyoming Coordinate System, west central zone (Transverse Mercator)
Blue 1000-meter Universal Transverse Mercator ticks, zone 12
North American Datum of 1983 (NAD 83) is shown by dashed corner ticks. The values of the shift between NAD 27 and NAD 83 for 7.5-minute intersections are obtainable from National Geodetic Survey NADCON software



ROAD CLASSIFICATION		
Heavy-duty	4 LANE (6 LANE)	Light-duty
Medium-duty	4 LANE (6 LANE)	Unimproved dirt
U. S. Route		Slate Route

CAMPBELL RIDGE, WY
42108-H1-TF-024

1953

DMA 4369 I NE-SERIES V874

