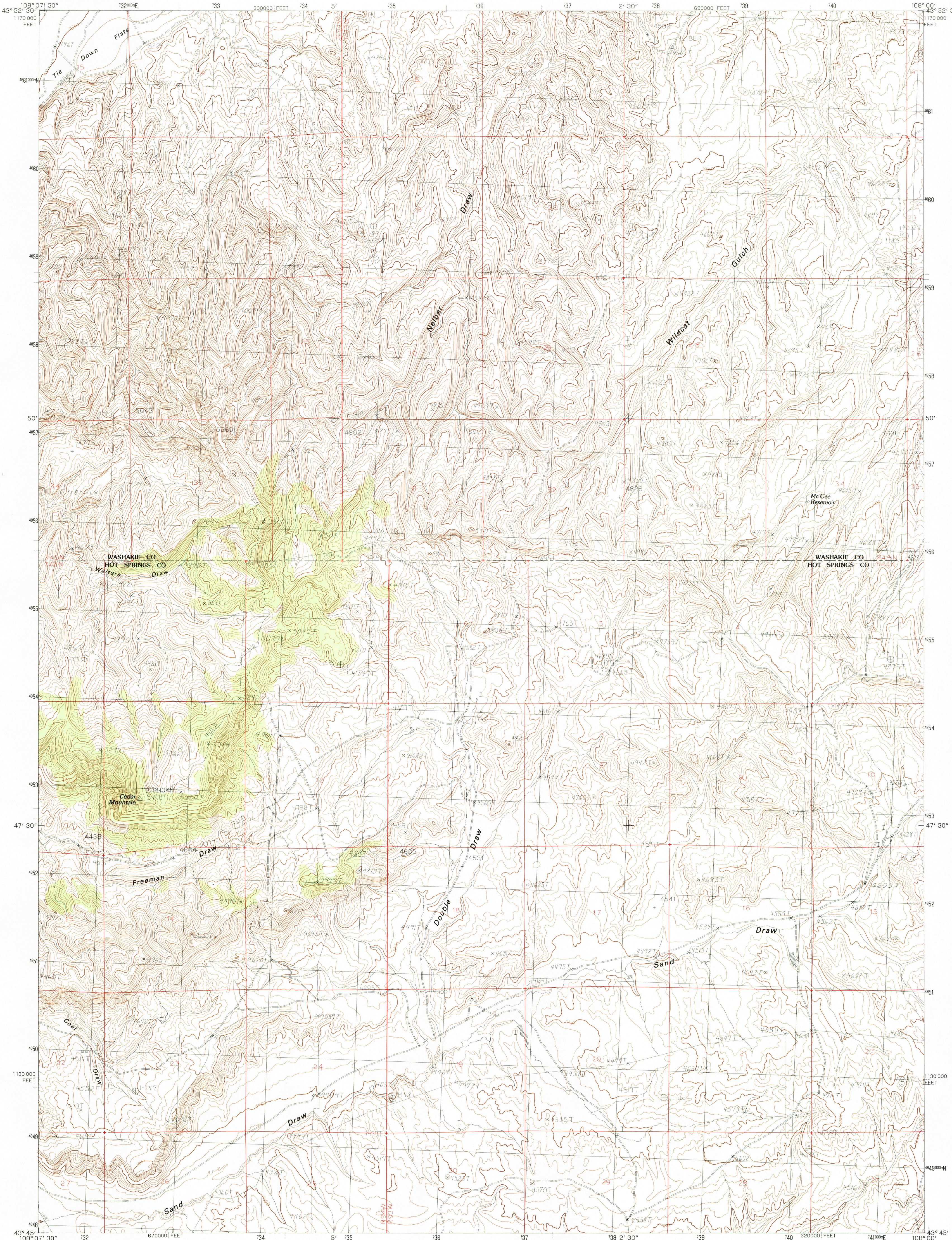


UNITED STATES  
DEPARTMENT OF THE INTERIOR  
GEOLOGICAL SURVEY

CEDAR MOUNTAIN QUADRANGLE  
WYOMING  
7.5 MINUTE SERIES (TOPOGRAPHIC)



PRODUCED BY THE UNITED STATES GEOLOGICAL SURVEY  
CONTROL BY USGS, NOS/NOAA  
COMPILED FROM AERIAL PHOTOGRAPHS TAKEN 1976  
FIELD CHECKED 1979. MAP EDITED 1985  
PROJECTION 1985 TRANSVERSE MERCATOR  
GRID: 1000-METER UNIVERSAL TRANSVERSE MERCATOR  
10,000-FOOT STATE GRID TICKS WYOMING, WEST CENTRAL  
AND EAST CENTRAL ZONES  
UTM GRID DECLINATION 14° EAST  
1985 MAGNETIC NORTH DECLINATION 14° EAST  
VERTICAL DATUM NATIONAL GEODETIC VERTICAL DATUM OF 1929  
To place on the predicted North American Datum of 1983,  
move the projection lines as shown by dashed corner ticks  
(8 meters north and 53 meters east)  
There may be private inholdings within the boundaries of any  
Federal and State Reservations shown on this map

**PROVISIONAL MAP**  
Produced from original  
manuscript drawings. Infor-  
mation shown as of date of  
field check.

THIS MAP COMPLIES WITH NATIONAL MAP ACCURACY STANDARDS  
FOR SALE BY U.S. GEOLOGICAL SURVEY, DENVER, COLORADO 80225  
OR RESTON, VIRGINIA 22092

1	2	3
4	5	6
7	8	

ADJOINING 7.5 QUADRANGLE NAMES

**ROAD LEGEND**  
Improved Road .....  
Unimproved Road .....  
Trail .....  
Interstate Route .....  
U.S. Route .....  
State Route .....

**CEDAR MOUNTAIN, WYOMING**  
PROVISIONAL EDITION 1985

43108-G1-TF-024