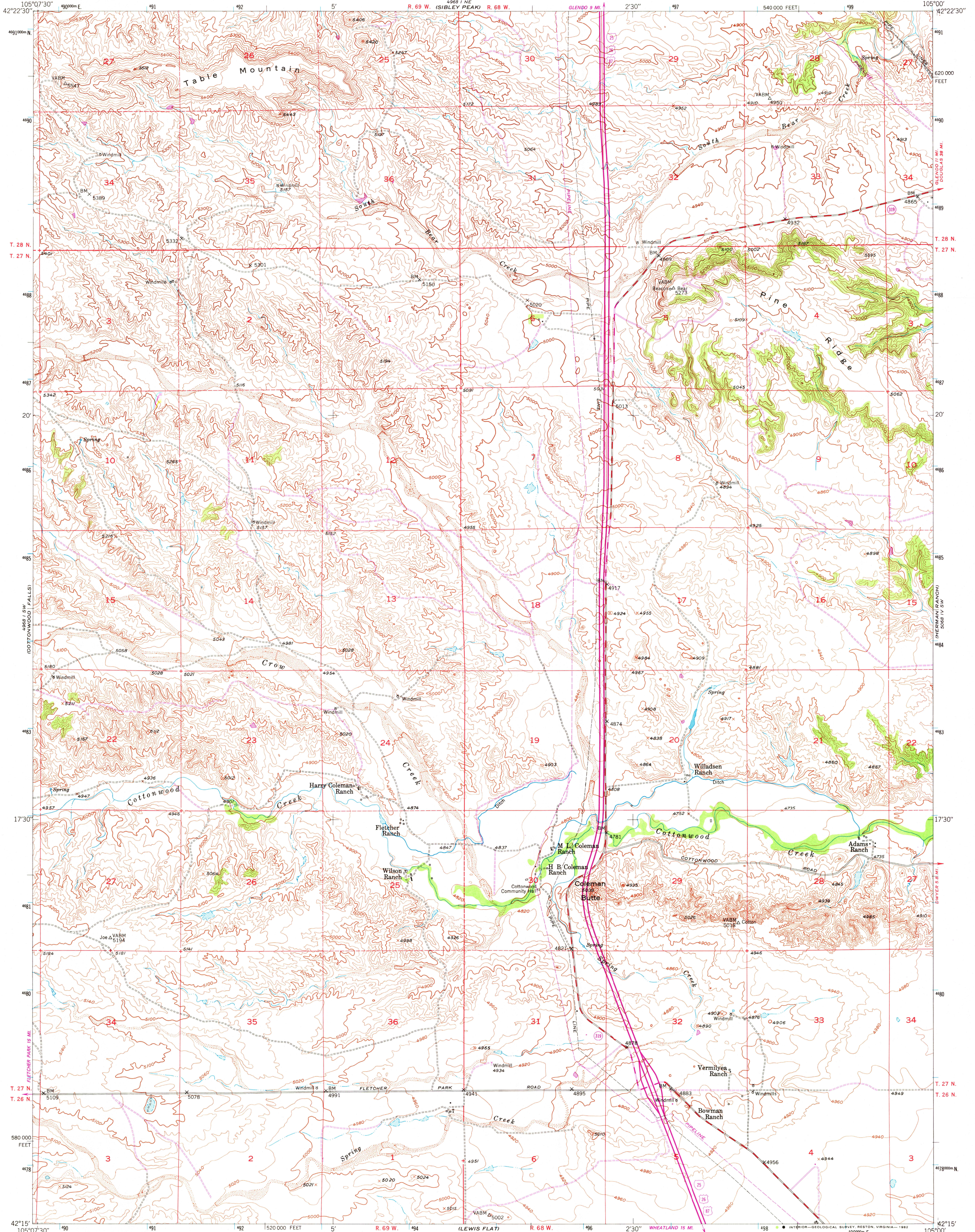


UNITED STATES
DEPARTMENT OF THE INTERIOR
GEOLOGICAL SURVEY

COLEMAN BUTTE QUADRANGLE
WYOMING-PLATTE CO.
7.5 MINUTE SERIES (TOPOGRAPHIC)



Mapped, edited, and published by the Geological Survey as part of the Department of the Interior program for the development of the Missouri River Basin Control by USGS and NOS/NOAA

Topography from aerial photographs by multiplex methods
Aerial photographs taken June 1947 and September 1948
Field check 1950

Polyconic projection. 1927 North American datum
10,000-foot grid based on Wyoming coordinate system, east zone

Dashed land lines indicate approximate location
1000-meter Universal Transverse Mercator grid ticks, zone 13, shown in blue

Revisions shown in purple compiled from aerial photographs taken 1979 and other source data. This information not field checked. Map edited 1981

THIS MAP COMPLIES WITH NATIONAL MAP ACCURACY STANDARDS
FOR SALE BY U. S. GEOLOGICAL SURVEY, DENVER, COLORADO 80225, OR RESTON, VIRGINIA 22092
A FOLDER DESCRIBING TOPOGRAPHIC MAPS AND SYMBOLS IS AVAILABLE ON REQUEST

To place on the predicted North American Datum 1983
move the projection lines 7 meters north and
47 meters east as shown by dashed corner ticks

ROAD CLASSIFICATION

Primary highway, hard surface
Secondary highway, hard surface
Unimproved road
Interstate Route
U. S. Route
State Route

COLEMAN BUTTE, WYO.
N4215-W10500/7.5
1950
DMA 4968 I SE-SERIES V874
PHOTOREVISED 1981

OCT 22 1982

RETURN TO:
USGS MID HISTORICAL MAP ARCHIVES