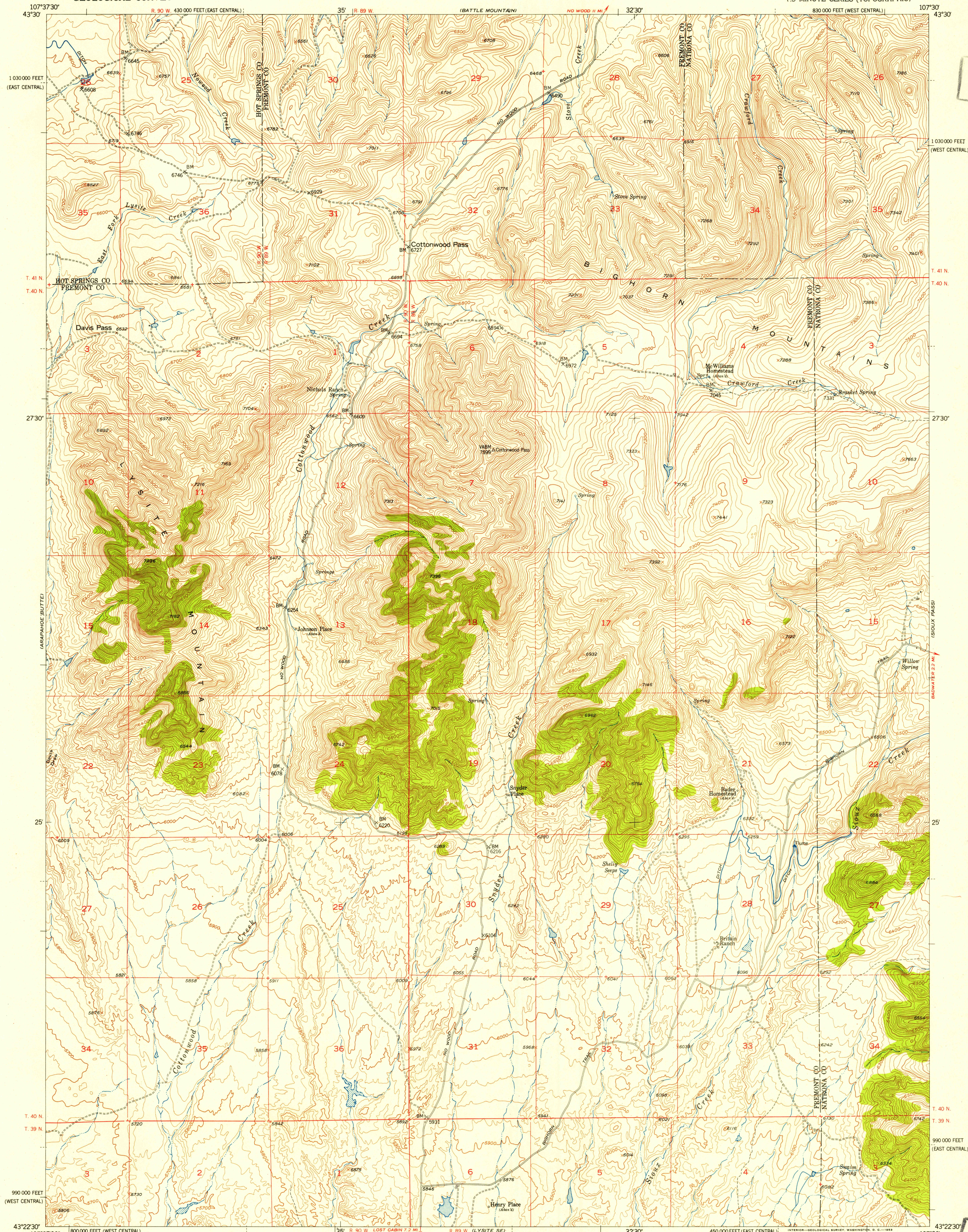


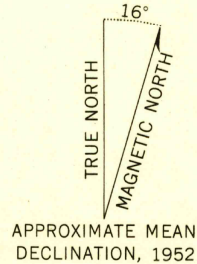
UNITED STATES
DEPARTMENT OF THE INTERIOR
GEOLOGICAL SURVEY

COTTONWOOD PASS QUADRANGLE
WYOMING
7.5 MINUTE SERIES (TOPOGRAPHIC)



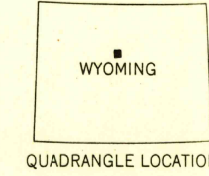
U. S. G. S.
FILE COPY
Inspection and Editing

Mapped, edited, and published by the Geological Survey
as part of the Department of the Interior program
for the development of the Missouri River Basin
Control by USGS and USC&GS
Topography from aerial photographs by multiplex methods
Aerial photographs taken 1949. Field check 1952
Polyconic projection, 1927 North American datum
10,000-foot grid based on Wyoming coordinate system,
west central and east central zones
Dashed land lines indicate approximate locations



APPROXIMATE MEAN
DECLINATION, 1952

THIS MAP COMPLIES WITH NATIONAL MAP ACCURACY STANDARDS
FOR SALE BY U. S. GEOLOGICAL SURVEY, FEDERAL CENTER, DENVER, COLORADO OR WASHINGTON 25, D. C.
A FOLDER DESCRIBING TOPOGRAPHIC MAPS AND SYMBOLS IS AVAILABLE ON REQUEST



ROAD CLASSIFICATION
Heavy-duty ——— 2 LANE 16 LANE Light-duty ———
Medium-duty ——— 2 LANE 16 LANE Unimproved dirt ———
U. S. Route ——— State Route ———

COTTONWOOD PASS, WYO.
N4322.5—W10730/7.5

1952

RETURN TO:
USGS AND HISTORICAL MAP ARCHIVES

U. S. G. S.
FILE COPY
Inspection and Editing

JAN 6 1954