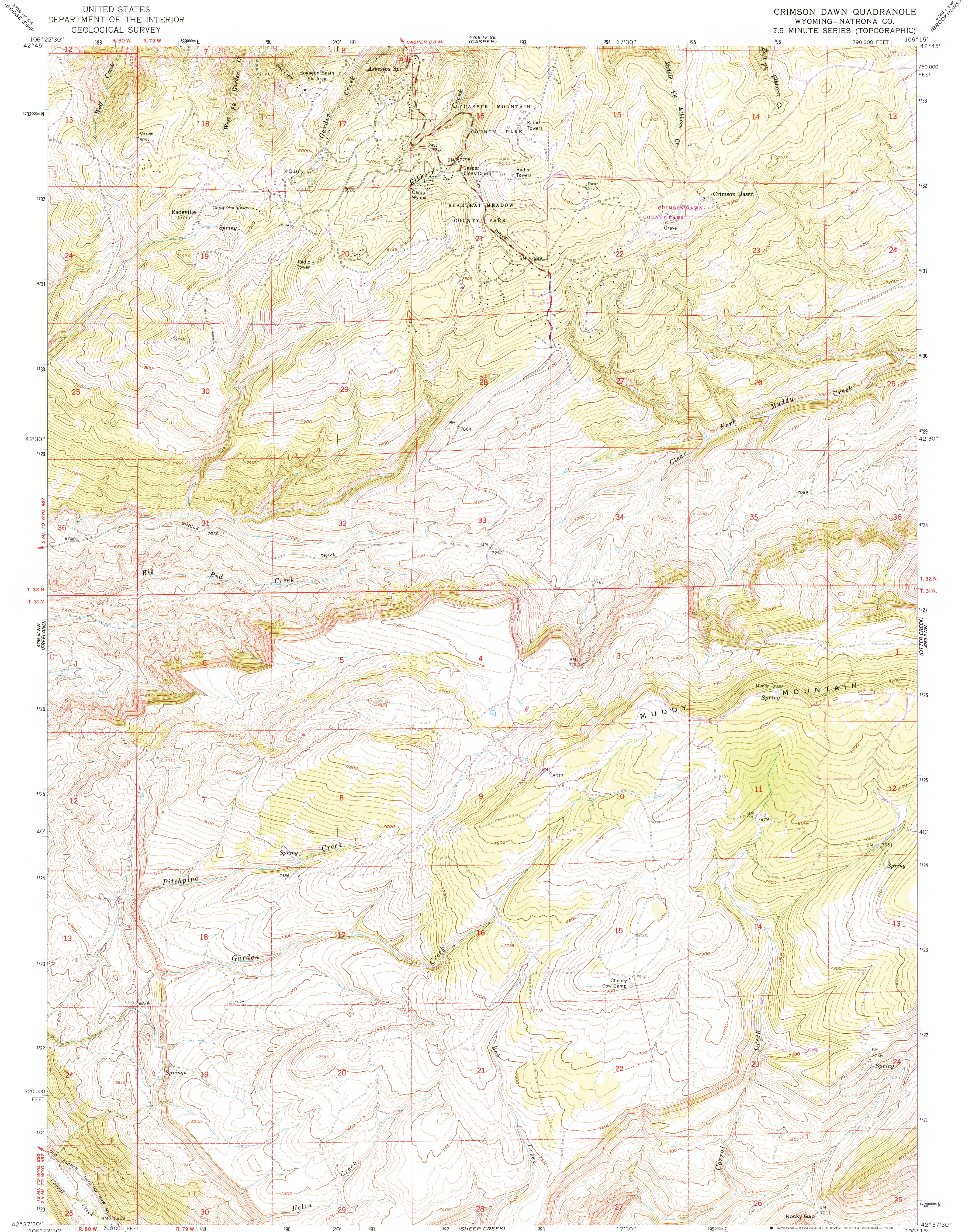


UNITED STATES
DEPARTMENT OF THE INTERIOR
GEOLOGICAL SURVEY

CRIMSON DAWN QUADRANGLE
WYOMING-NATRONA CO.
7.5 MINUTE SERIES (TOPOGRAPHIC)



Mapped, edited, and published by the Geological Survey

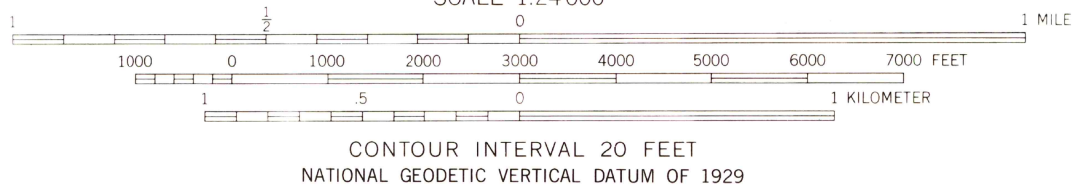
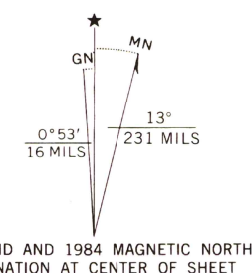
Control by USGS and NOS/NOAA

Topography by photogrammetric methods from aerial
photographs taken 1959. Field checked 1960

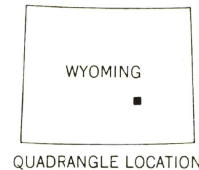
Polyconic projection. 1927 North American Datum
10,000-foot grid based on Wyoming coordinate system, east central zone
1000-meter Universal Transverse Mercator grid ticks,
zone 13, shown in blue

Fine red dashed lines indicate selected fence and field lines where
generally visible on aerial photographs. This information is unchecked
Dashed land lines indicate approximate locations

To place on the predicted North American Datum 1983
move the projection lines 8 meters north and
50 meters east as shown by dashed corner ticks



CONTOUR INTERVAL 20 FEET
NATIONAL GEODETIC VERTICAL DATUM OF 1929



QUADRANGLE LOCATION

ROAD CLASSIFICATION
Medium-duty ——— Light-duty ———
Unimproved dirt - - - - -

CRIMSON DAWN, WYO.
42106-F3-TF-024

1960
PHOTOREVISED 1984
DMA 4769 III NE-SERIES 8784

THIS MAP COMPLIES WITH NATIONAL MAP ACCURACY STANDARDS
FOR SALE BY U. S. GEOLOGICAL SURVEY, DENVER, COLORADO 80225, OR RESTON, VIRGINIA 22092
A FOLDER DESCRIBING TOPOGRAPHIC MAPS AND SYMBOLS IS AVAILABLE ON REQUEST

Revisions shown in purple compiled
from aerial photographs taken 1960
and other source data. This information
not field checked. Map edited 1984