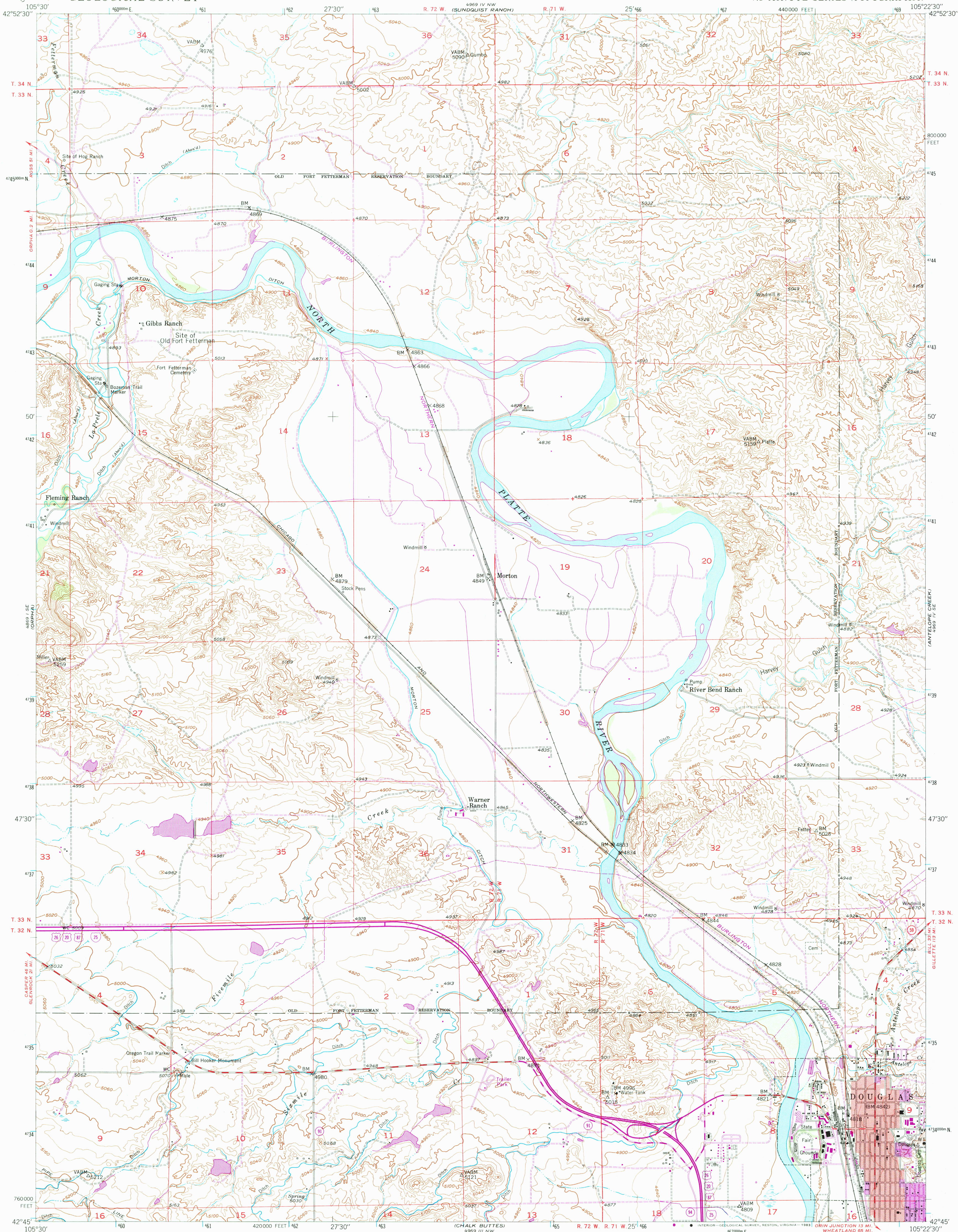
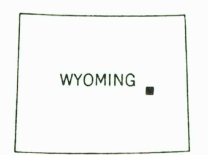
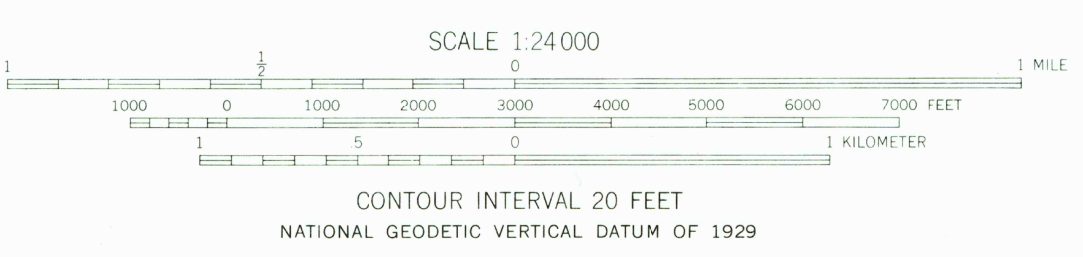
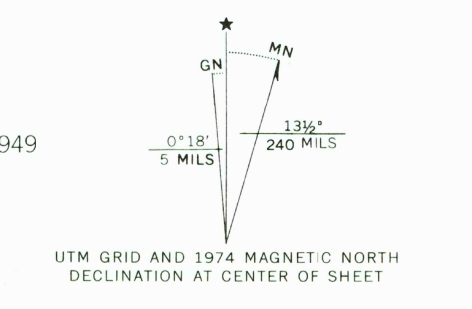


UNITED STATES  
DEPARTMENT OF THE INTERIOR  
GEOLOGICAL SURVEY

DOUGLAS QUADRANGLE  
WYOMING-CONVERSE CO.  
7.5 MINUTE SERIES (TOPOGRAPHIC)



Maped, edited, and published by the Geological Survey as part of the Department of the Interior program for the development of the Missouri River Basin Control by USGS and USC&GS  
Topography from aerial photographs by multiplex methods  
Aerial photographs taken September 1948. Field check 1949  
Polyconic projection, 1927 North American datum  
10,000-foot grid based on Wyoming coordinate system, east zone  
Red tint indicates area in which only landmark buildings are shown  
1000-meter Universal Transverse Mercator grid ticks, zone 13, shown in blue  
Revisions shown in purple compiled from aerial photographs taken 1974. This information not field checked



ROAD CLASSIFICATION  
Primary highway, all weather, hard surface  
Secondary highway, all weather, hard surface  
Light-duty road, all weather, improved surface  
Unimproved road, fair or dry weather  
Interstate Route  
U. S. Route  
State Route

DOUGLAS, WYO.  
N4245-W10522.5/7.5

1949  
PHOTOREVISED 1974  
DMA 4969 IV SW-SERIES 1874

THIS MAP COMPLIES WITH NATIONAL MAP ACCURACY STANDARDS  
FOR SALE BY U. S. GEOLOGICAL SURVEY, DENVER, COLORADO 80225, OR RESTON, VIRGINIA 22092  
A FOLDER DESCRIBING TOPOGRAPHIC MAPS AND SYMBOLS IS AVAILABLE ON REQUEST

To place on the predicted North American Datum 1983  
move the projection lines 7 meters north and  
48 meters east as shown by dashed corner ticks

RETURN TO:  
USGS AND HISTORICAL MAP ARCHIVES

AUG 2 1966