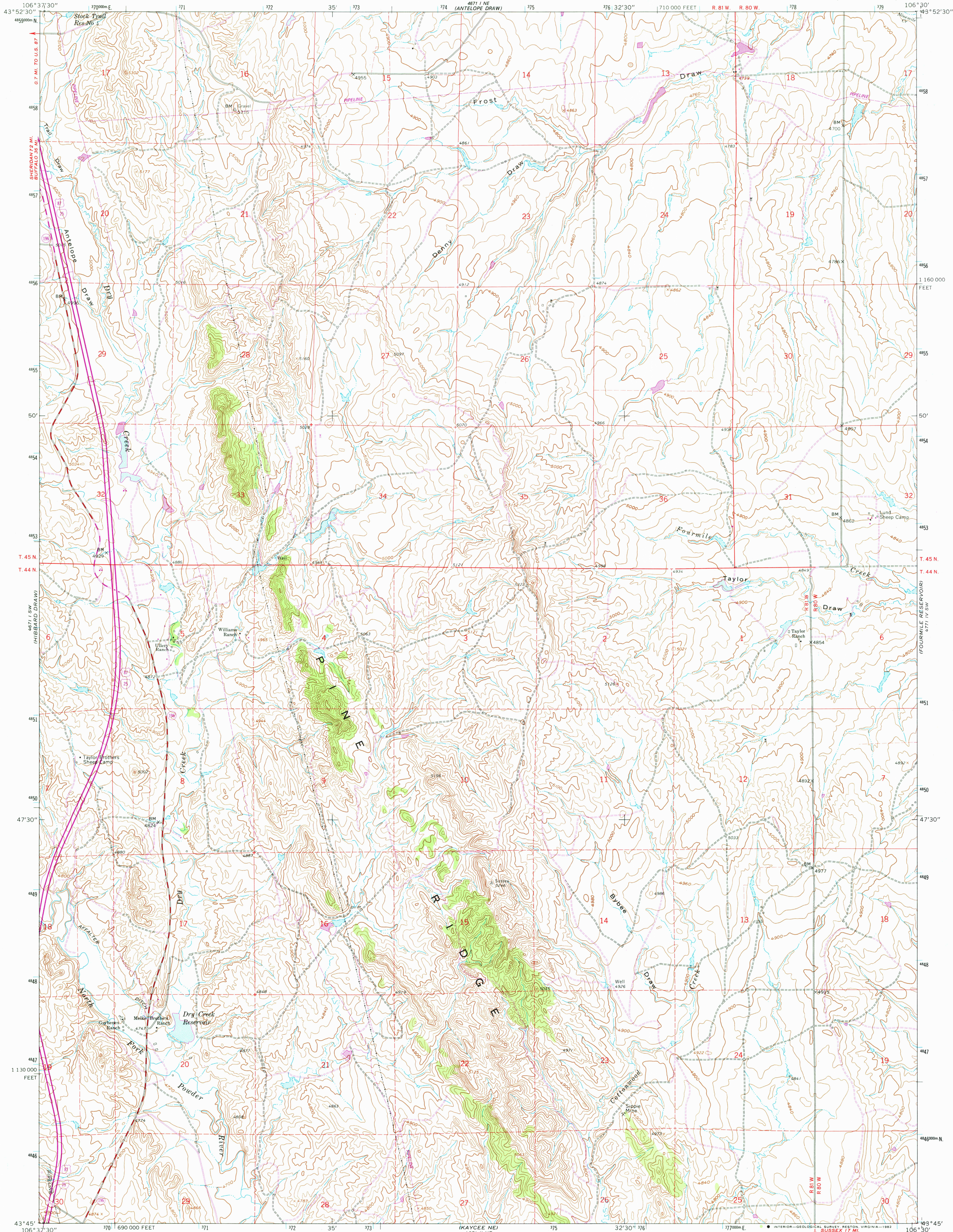


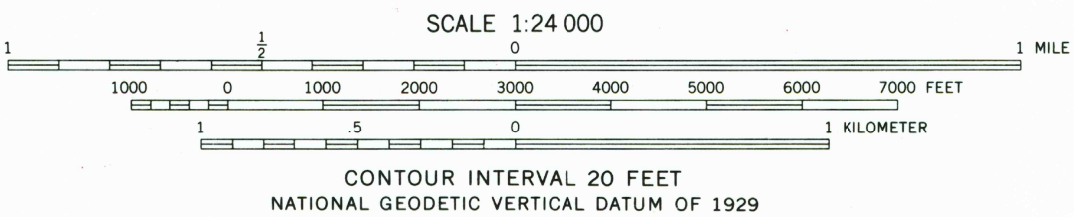
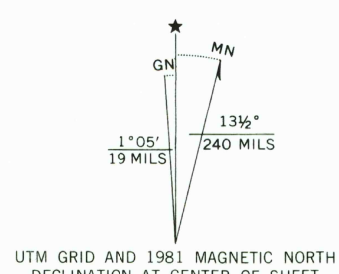
UNITED STATES
DEPARTMENT OF THE INTERIOR
GEOLOGICAL SURVEY

DRY CREEK RESERVOIR QUADRANGLE
WYOMING—JOHNSON CO.
7.5 MINUTE SERIES (TOPOGRAPHIC)

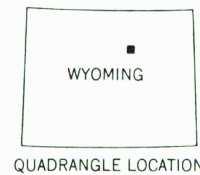


Maped, edited, and published by the Geological Survey
Control by USGS and NOS/NOAA
Topography by photogrammetric methods from aerial
photographs taken 1956. Field checked 1961
Polyconic projection. 1927 North American datum
10,000-foot grid based on Wyoming coordinate system,
east central zone
1000-meter Universal Transverse Mercator grid ticks,
zone 13, shown in blue
Fine red dashed lines indicate selected fence lines
To place on the predicted North American Datum 1983
move the projection lines 8 meters north and
50 meters east as shown by dashed corner ticks

Revisions shown in purple compiled
from aerial photographs taken 1978
and other source data. This information
not field checked. Map edited 1981



THIS MAP COMPLIES WITH NATIONAL MAP ACCURACY STANDARDS
FOR SALE BY U. S. GEOLOGICAL SURVEY, DENVER, COLORADO 80225, OR RESTON, VIRGINIA 22092
A FOLDER DESCRIBING TOPOGRAPHIC MAPS AND SYMBOLS IS AVAILABLE ON REQUEST



ROAD CLASSIFICATION
Primary highway, hard surface ———— Light-duty road, hard or improved surface ————
Secondary highway, hard surface ———— Unimproved road ————
Interstate Route ———— U. S. Route ———— State Route ————

DRY CREEK RESERVOIR, WYO.
N4345—W10630/7.5

1961
PHOTOREVISED 1981
DMA 4671 I SE—SERIES V874

RETURN TO:
USGS AND HISTORICAL MAP ARCHIVES

FEB 11 1982

FEB 11 1982

2400