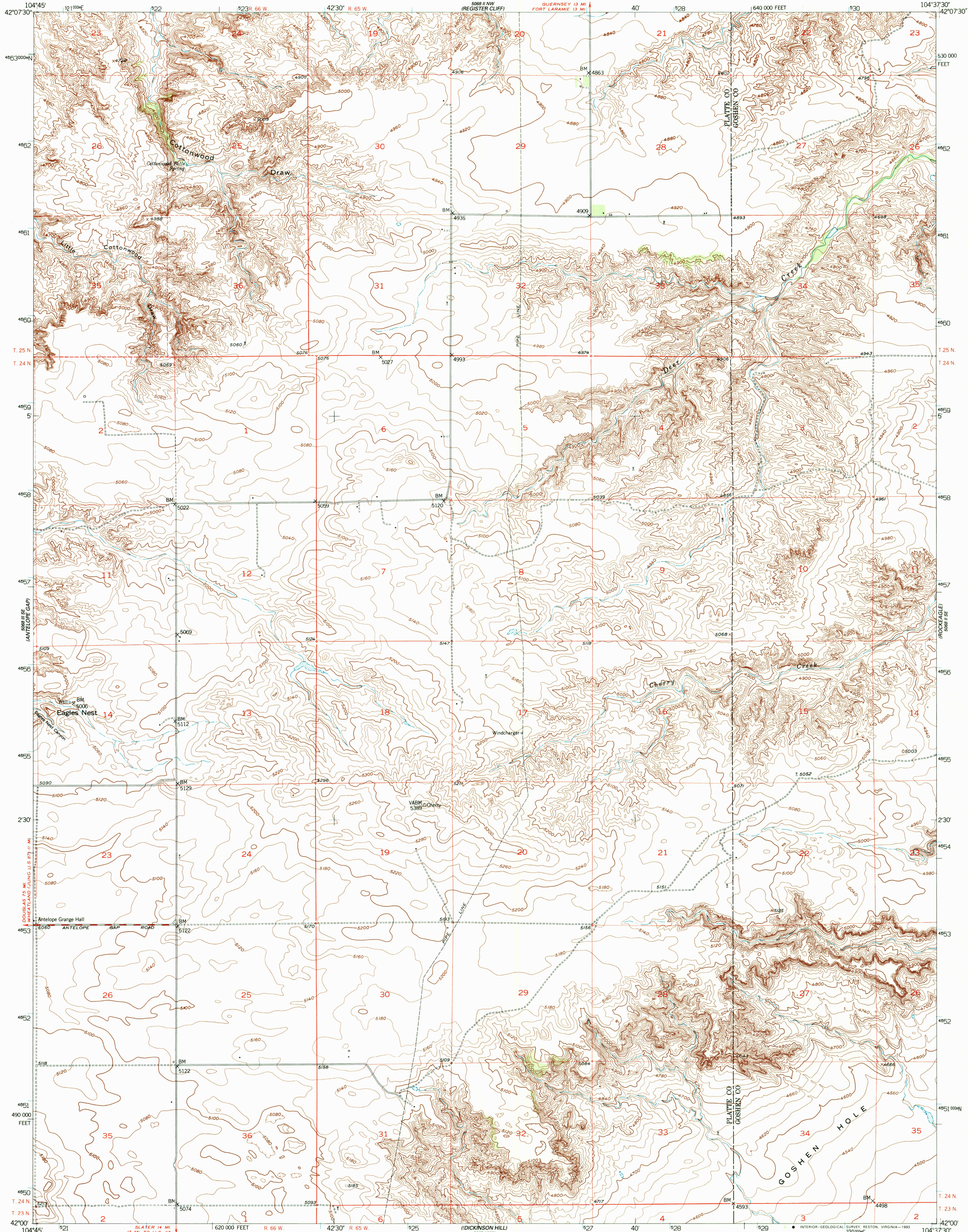
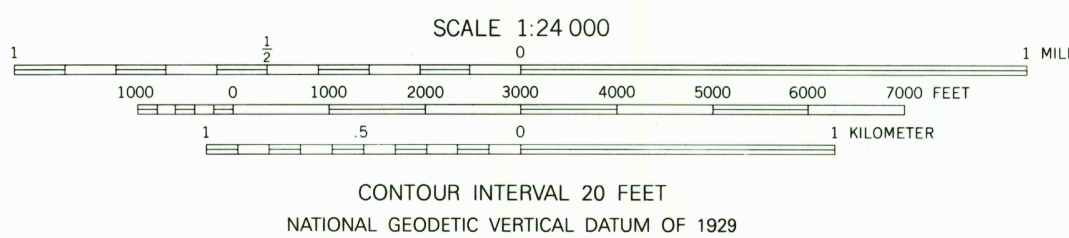
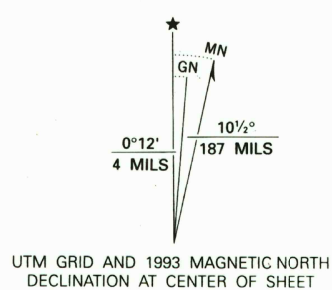


UNITED STATES
DEPARTMENT OF THE INTERIOR
GEOLOGICAL SURVEY

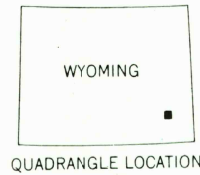
EAGLES NEST QUADRANGLE
WYOMING
7.5 MINUTE SERIES (TOPOGRAPHIC)



Produced by the United States Geological Survey as part of the Department of the Interior program for the development of the Missouri River Basin Control by USGS and NOS/NOAA
Compiled from aerial photographs taken 1948
Topography by plane-table surveys 1951
North American Datum of 1927 (NAD 27). Projection and 1000-foot grid ticks: Wyoming Coordinate System, east zone (Transverse Mercator). 1000-meter Universal Transverse Mercator grid ticks, zone 13, shown in blue
The difference between NAD 27 and North American Datum of 1983 (NAD 83) for 7.5 minute intersections is given in USGS Bulletin 1875. The NAD 83 is shown by dashed corner ticks
Photinspected from 1991 source; no major culture or drainage changes observed. Boundaries and names verified 1993



THIS MAP COMPLIES WITH NATIONAL MAP ACCURACY STANDARDS
FOR SALE BY U.S. GEOLOGICAL SURVEY
DENVER, COLORADO 80225, OR RESTON, VIRGINIA 22092
A FOLDER DESCRIBING TOPOGRAPHIC MAPS AND SYMBOLS IS AVAILABLE ON REQUEST



ROAD CLASSIFICATION
Primary highway, hard surface
Secondary highway, hard surface
Light-duty road, hard or improved surface
Unimproved road
Interstate Route
U. S. Route
State Route

EAGLES NEST, WYO.
42104-A6-TF-024

1951
MINOR REVISION 1993
DMA 5068 II SW-SERIES V874

