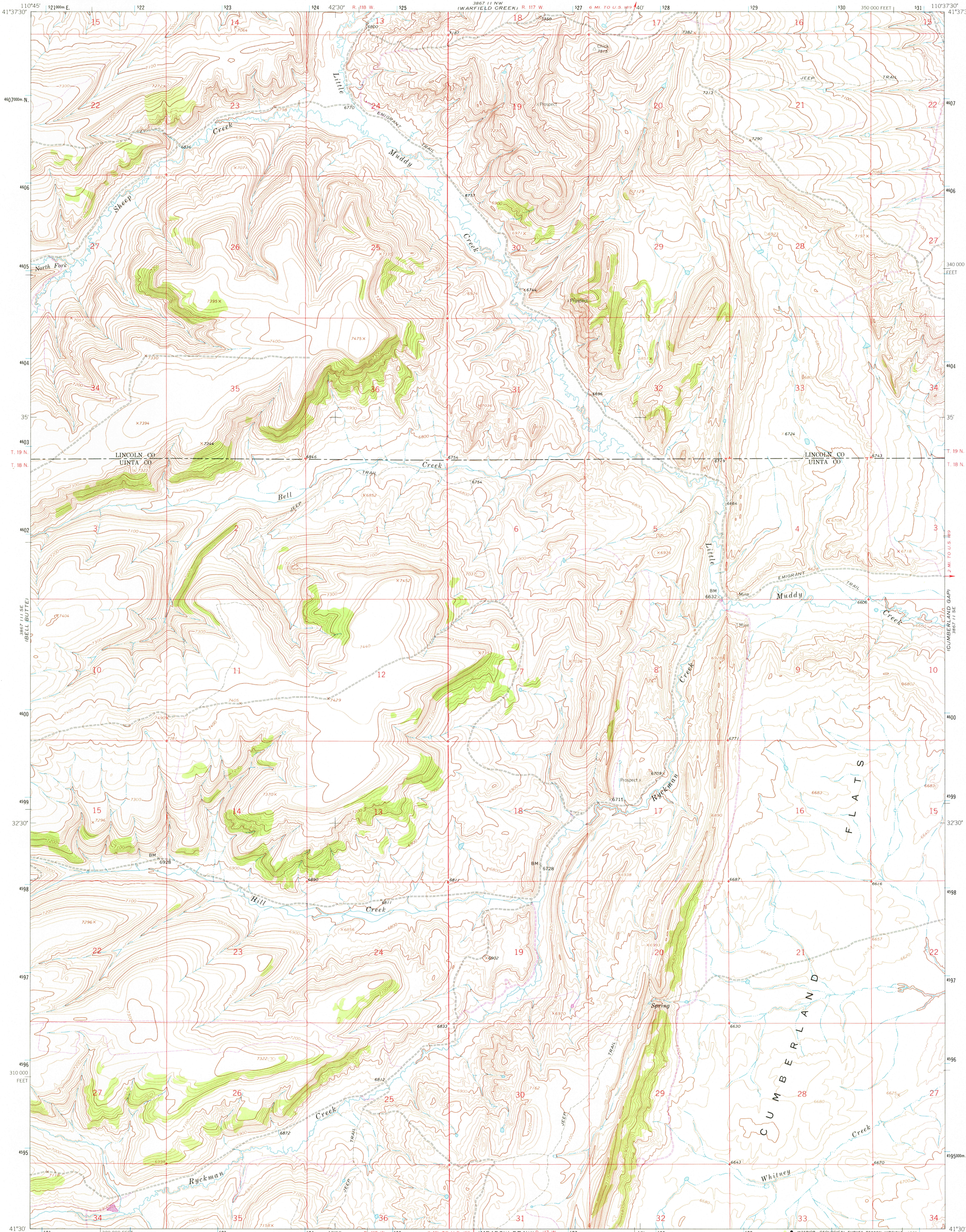


UNITED STATES
DEPARTMENT OF THE INTERIOR
GEOLOGICAL SURVEY



ELKOL SW QUADRANGLE
WYOMING
7.5 MINUTE SERIES (TOPOGRAPHIC)



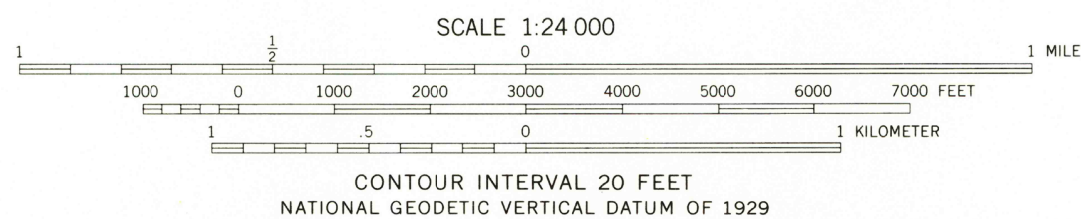
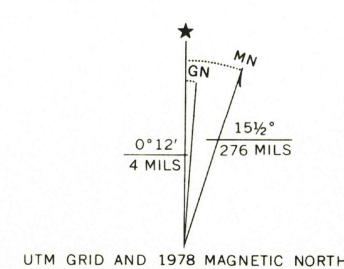
Mapped, edited, and published by the Geological Survey

Control by USGS and NOS/NOAA

Topography by photogrammetric methods from aerial photographs taken 1961-1962. Field checked 1962

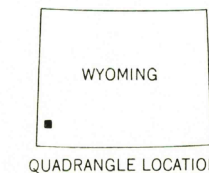
Polycyclic projection. 1927 North American datum. 10,000-foot grid based on Wyoming coordinate system, west zone 1000-meter Universal Transverse Mercator grid ticks, zone 12, shown in blue.

Revisions shown in purple compiled from aerial photographs taken 1976 and other source data. This information not field checked. Map edited 1978



THIS MAP COMPLIES WITH NATIONAL MAP ACCURACY STANDARDS
FOR SALE BY U.S. GEOLOGICAL SURVEY, DENVER, COLORADO 80225, OR RESTON, VIRGINIA 22092
A FOLDER DESCRIBING TOPOGRAPHIC MAPS AND SYMBOLS IS AVAILABLE ON REQUEST

ROAD CLASSIFICATION
Unimproved dirt =====



USGS
Historical File
Topographic Division

ELKOL SW, WYO.
N4130-W11037.5/7.5

1962
PHOTOREVISED 1978
AMS 3867 11 SW-SERIES V874

APR 26 1979

RETURN TO:
USGS AND HISTORICAL MAP ARCHIVES