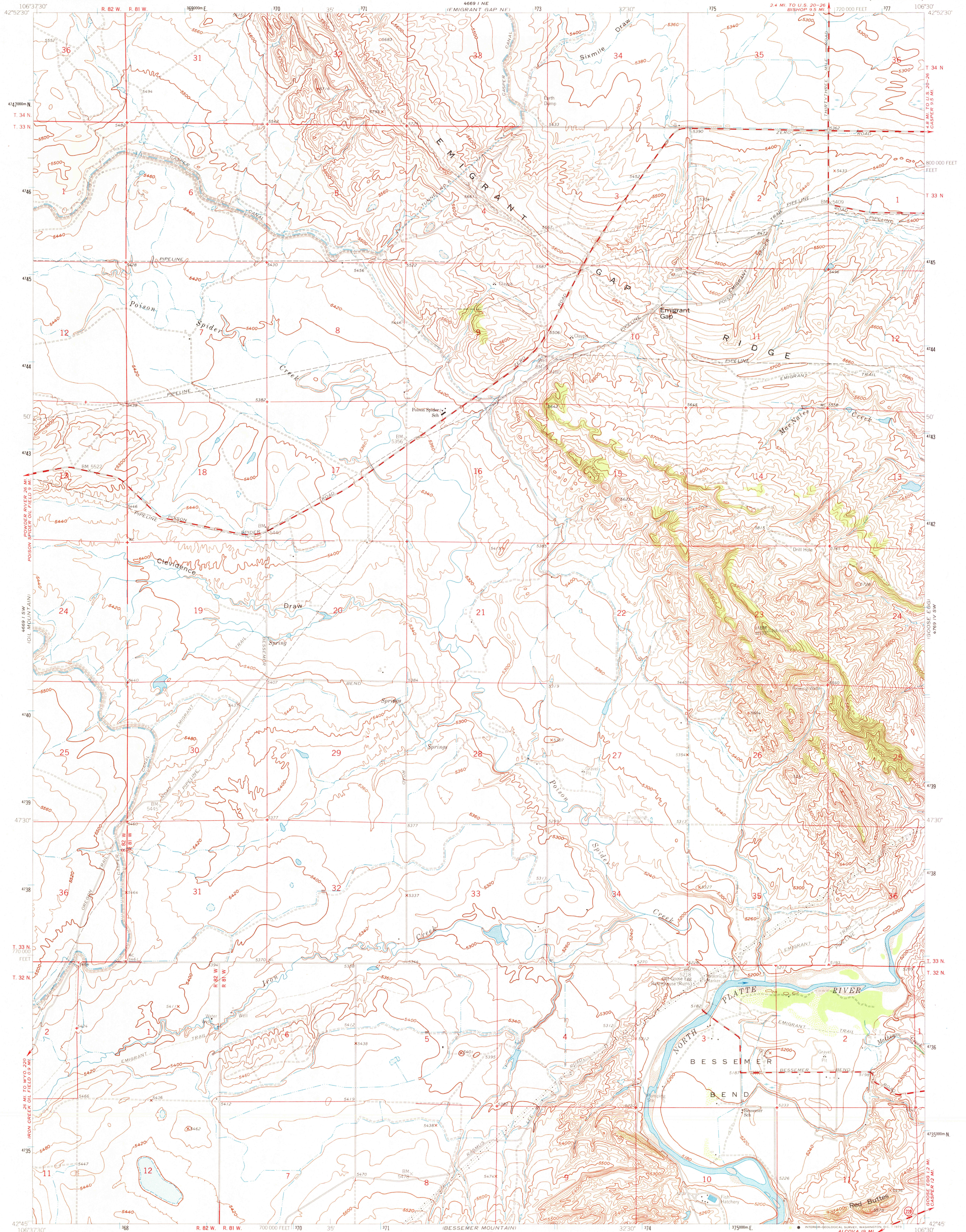
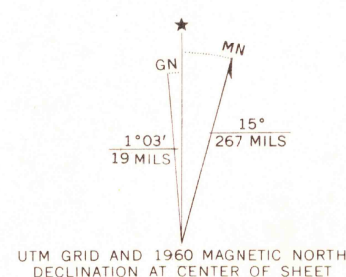


UNITED STATES
DEPARTMENT OF THE INTERIOR
GEOLOGICAL SURVEY

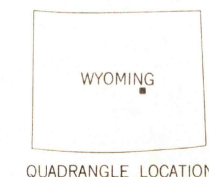
EMIGRANT GAP QUADRANGLE
WYOMING-NATRONA CO.
7.5 MINUTE SERIES (TOPOGRAPHIC)



Mapped, edited, and published by the Geological Survey
Control by USGS and USC & GS
Topography by photogrammetric methods from aerial photographs
taken 1947 and planetable surveys 1950. Revised 1960
Polyconic projection. 1927 North American datum
10,000-foot grid based on Wyoming coordinate system,
east central zone
1000 meter Universal Transverse Mercator grid ticks,
zone 13, shown in blue



SCALE 1:24,000
1 0 1000 2000 3000 4000 5000 6000 7000 FEET
1 0 5 10 15 20 25 30 KILOMETER
CONTOUR INTERVAL 20 FEET
DATUM IS MEAN SEA LEVEL
THIS MAP COMPLIES WITH NATIONAL MAP ACCURACY STANDARDS
FOR SALE BY U. S. GEOLOGICAL SURVEY, DENVER, COLORADO 80225, OR WASHINGTON, D. C. 20242
A FOLDER DESCRIBING TOPOGRAPHIC MAPS AND SYMBOLS IS AVAILABLE ON REQUEST



ROAD CLASSIFICATION
Medium-duty ——— light-duty ———
Unimproved dirt ———
State Route ———

USGS
Historical 7.5
Topographic Division

EMIGRANT GAP, WYO.
N4245-W10630/7.5

1960

AMS 4669 I SE-SERIES V874

RETURN TO:
USGS HISTORICAL MAP ARCHIVES

2025