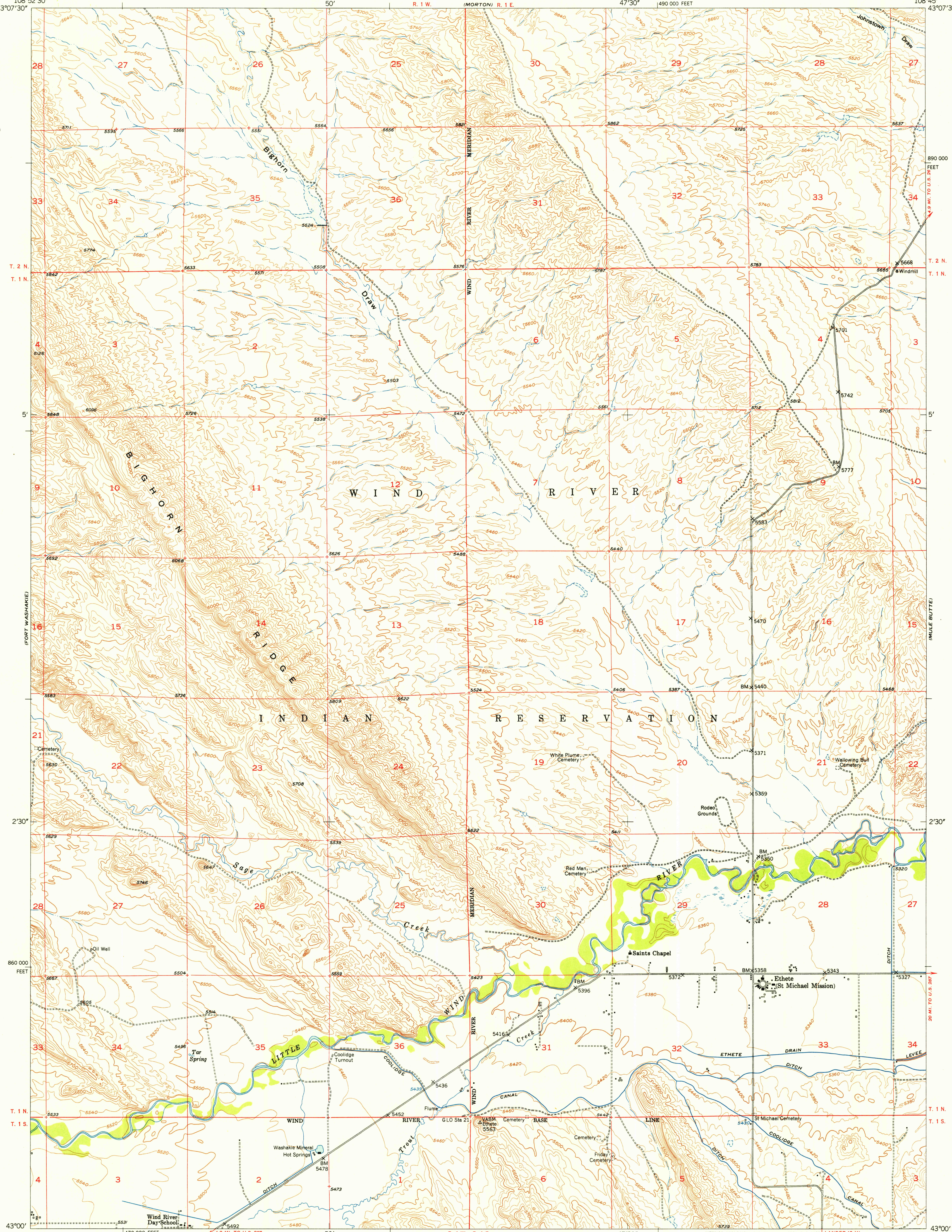


U. S. G. S.
FILE COPY
Impression and collation.



Mapped, edited, and published by the Geological Survey as part of the Department of the Interior program for the development of the Missouri River Basin Control by USGS and USC&GS
Topography from aerial photographs by multiplex methods by Tennessee Valley Authority. Aerial photographs taken 1948. Field check 1951
Polyconic projection. 1927 North American datum 10,000-foot grid based on Wyoming coordinate system, west central zone

TRUE NORTH
MAGNETIC NORTH
APPROXIMATE MEAN DECLINATION, 1951

SCALE 1:24000
1 0 1000 2000 3000 4000 5000 6000 7000 FEET
1 5 0 5 10 KILOMETER
CONTOUR INTERVAL 20 FEET
DATUM IS MEAN SEA LEVEL
THIS MAP COMPLIES WITH NATIONAL MAP ACCURACY STANDARDS
FOR SALE BY U. S. GEOLOGICAL SURVEY, FEDERAL CENTER, DENVER, COLORADO OR WASHINGTON 25, D. C.
A FOLDER DESCRIBING TOPOGRAPHIC MAPS AND SYMBOLS IS AVAILABLE ON REQUEST

ROAD CLASSIFICATION
Heavy-duty 4 LANE 6 LANE Light-duty
Medium-duty 4 LANE 6 LANE Unimproved dirt
U. S. Route State Route

ETHETE, WYO.
N4300-W10845/7.5
1951

U. S. G. S.
FILE COPY
Impression and collation.

RETURN TO:
USGS NED HISTORICAL MAP ARCHIVES

DEC 18 1952 1960