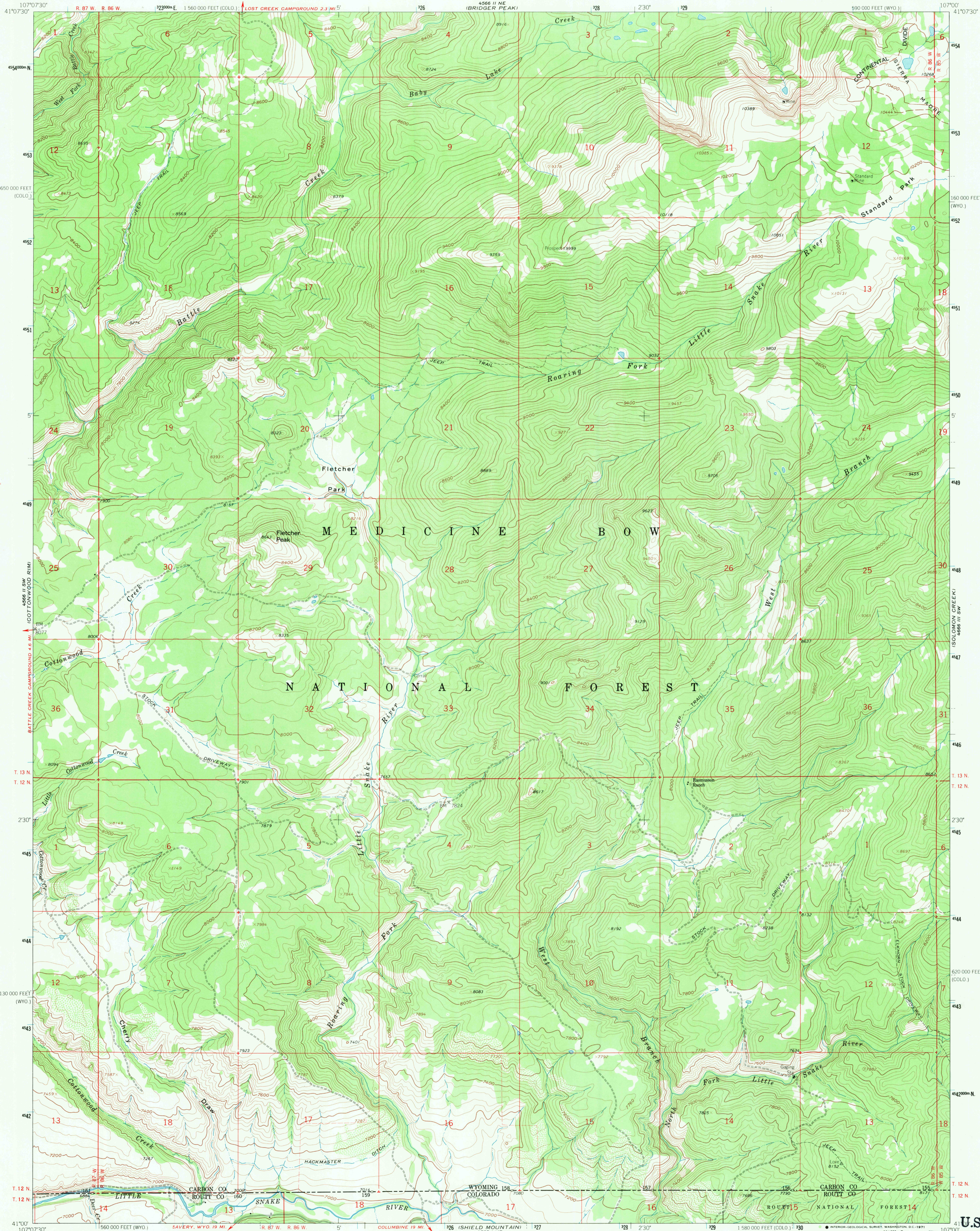


UNITED STATES  
DEPARTMENT OF THE INTERIOR  
GEOLOGICAL SURVEY

FLETCHER PEAK QUADRANGLE  
WYOMING-COLORADO  
7.5 MINUTE SERIES (TOPOGRAPHIC)



Maped, edited, and published by the Geological Survey as part of the Department of the Interior program for the development of the Missouri River Basin

Control by USGS and USC&GS

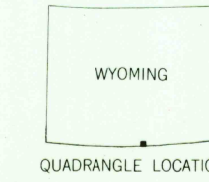
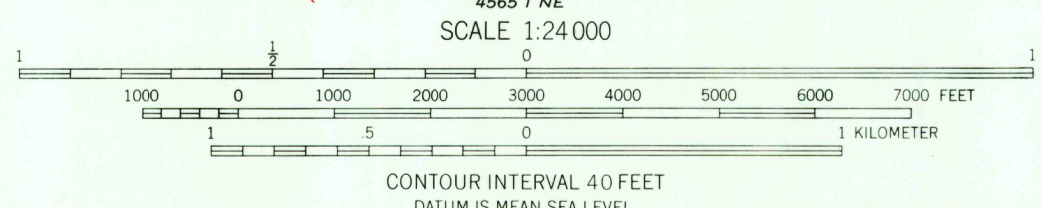
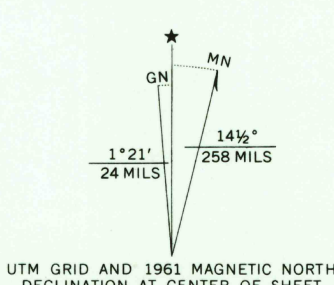
Topography by photogrammetric methods from aerial photographs taken 1957. Field checked 1961

Polyconic projection. 1927 North American datum

10,000-foot grid based on Wyoming coordinate system, east central zone and Colorado coordinate system, north zone

1,000-meter Universal Transverse Mercator grid ticks, zone 13, shown in blue

Fine red dashed lines indicate selected fence and field lines where generally visible on aerial photographs. This information is unchecked



ROAD CLASSIFICATION

Light-duty ————— Unimproved dirt —————

FLETCHER PEAK, WYO.-COLO.  
N4100-W10700/7.5

1961  
AMS 4566 II SE-SERIES V874

RETURN TO:  
USGS AND HISTORICAL MAP ARCHIVES

U.S.G.S.  
FILE COPY  
TOPOGRAPHIC DIVISION

MAY 10 1971

3350