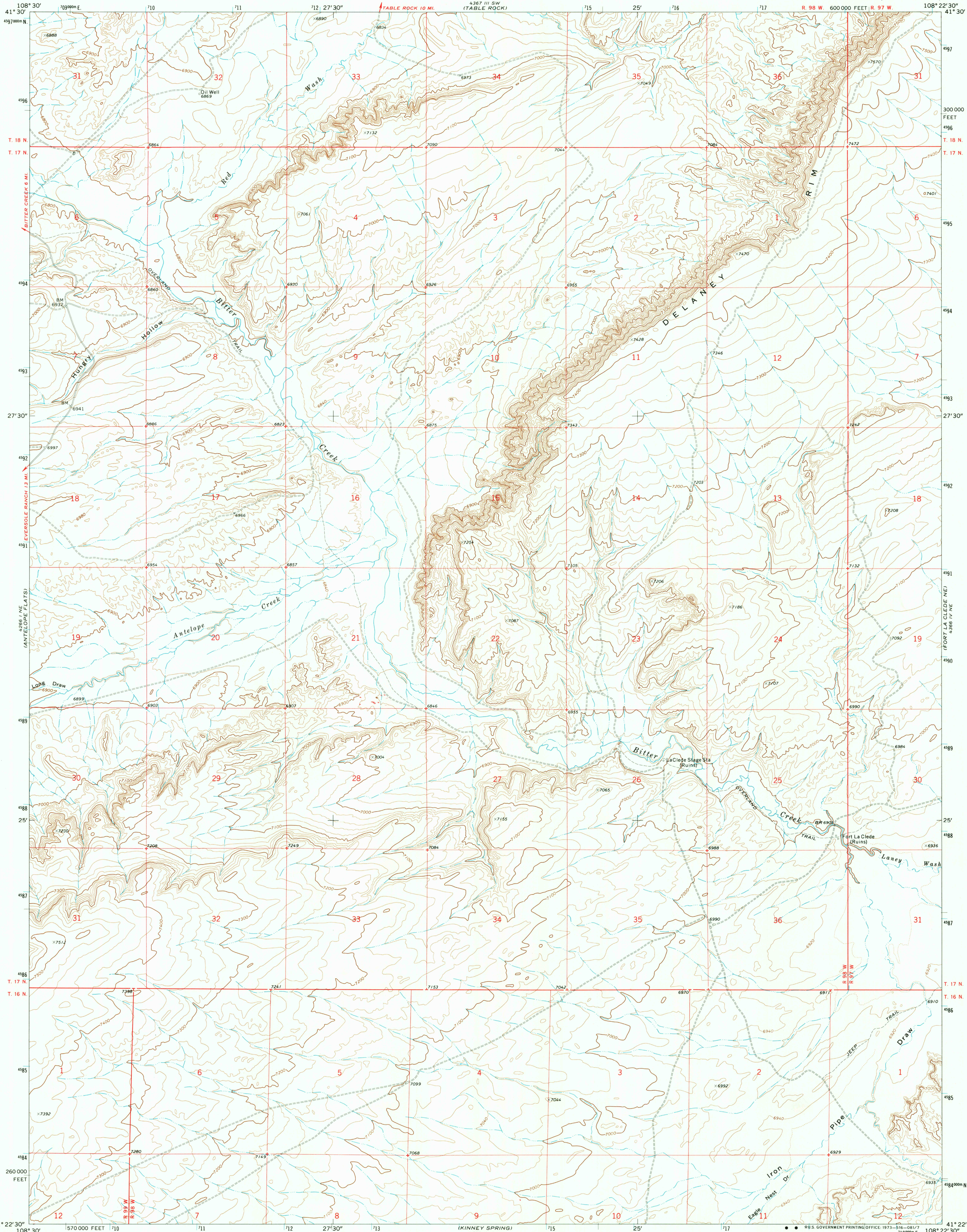


UNITED STATES
DEPARTMENT OF THE INTERIOR
GEOLOGICAL SURVEY

FORT LA CLEDE QUADRANGLE
WYOMING—SWEETWATER CO.
7.5 MINUTE SERIES (TOPOGRAPHIC)

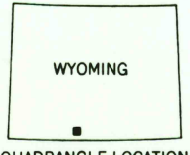
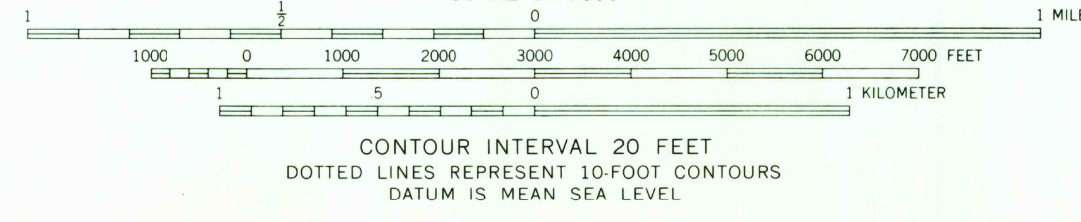
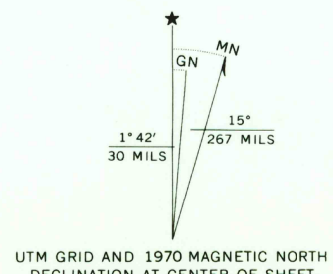


Mapped, edited, and published by the Geological Survey

Control by USGS and USC&GS

Topography by photogrammetric methods from aerial
photographs taken 1968. Field checked 1970

Polyconic projection. 1927 North American datum
10,000-foot grid based on Wyoming coordinate system,
west central zone
1000-meter Universal Transverse Mercator grid ticks,
zone 12, shown in blue



ROAD CLASSIFICATION
Primary highway, hard surface. Light-duty road, hard or improved surface.
Secondary highway, hard surface. Unimproved road.

Interstate Route U. S. Route State Route

FORT LA CLEDE, WYO.
N4122.5-W10822.5/7.5

1970

AMS 4366 IV NW-SERIES V874

RETURN TO:
USGS AND HISTORICAL MAP ARCHIVES

Hoer
2500
50 plan