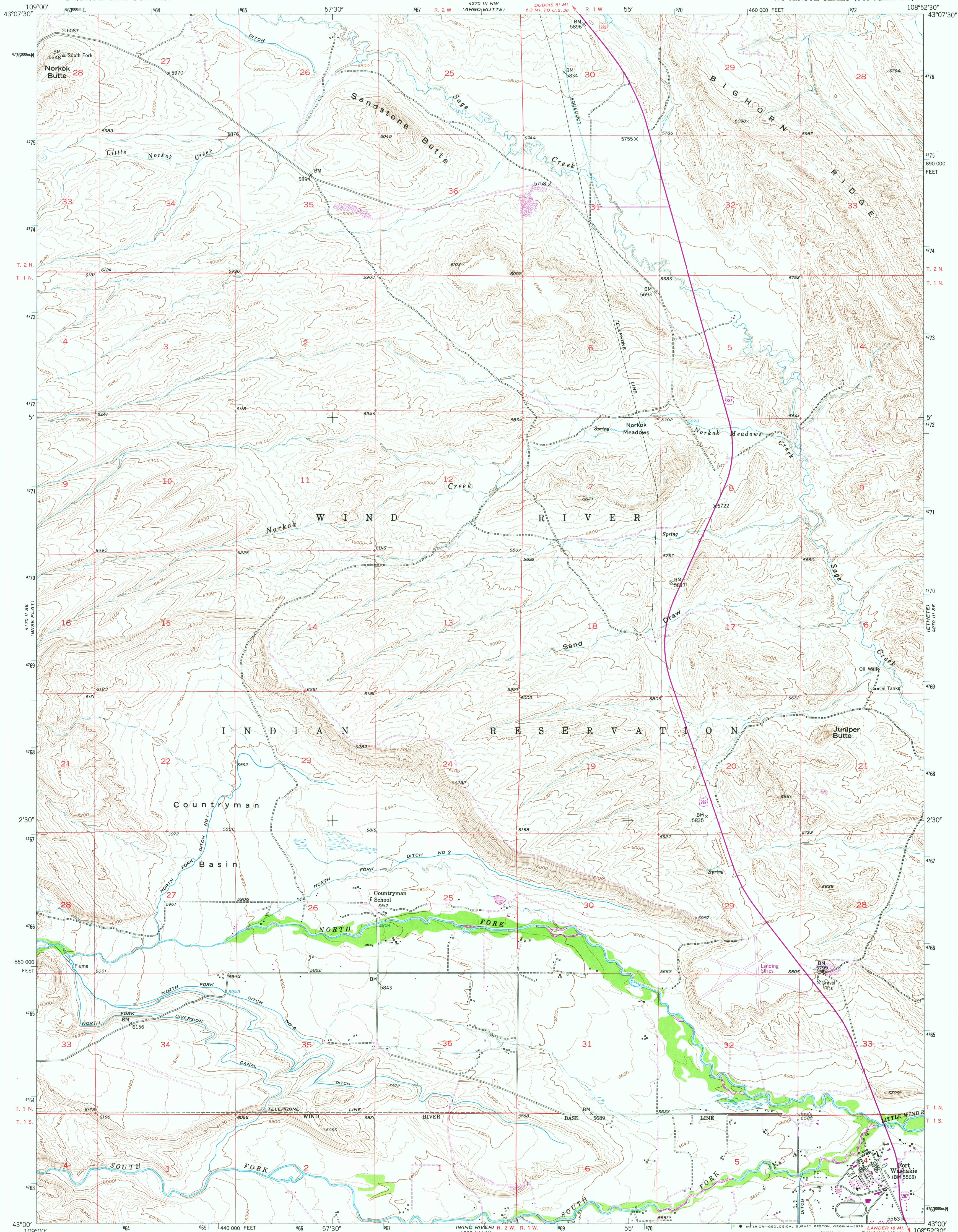
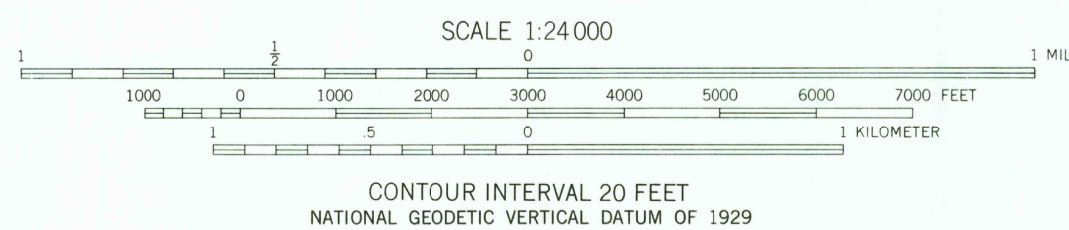
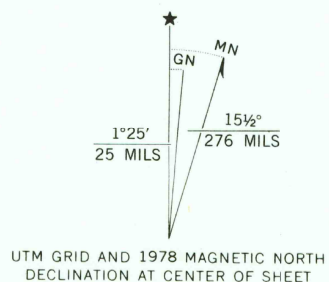


UNITED STATES
DEPARTMENT OF THE INTERIOR
GEOLOGICAL SURVEY

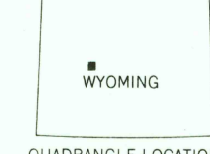
FORT WASHAKIE QUADRANGLE
WYOMING-FREMONT CO.
7.5 MINUTE SERIES (TOPOGRAPHIC)



Mapped, edited, and published by the Geological Survey
as part of the Department of the Interior program
for the development of the Missouri River Basin
Control by USGS and NOS/NOAA
Topography from aerial photographs by multiplex methods
Aerial photographs taken 1948. Field check 1951
Polyconic projection. 1927 North American datum
10,000-foot grid based on Wyoming coordinate system,
west central zone.
1000-meter Universal Transverse Mercator grid ticks,
zone 12; shown in blue.
Revisions shown in purple compiled from aerial photographs taken
1975. Map edited 1978. This information not field checked



THIS MAP COMPLIES WITH NATIONAL MAP ACCURACY STANDARDS
FOR SALE BY U. S. GEOLOGICAL SURVEY, DENVER, COLORADO 80225, OR RESTON, VIRGINIA 22092
A FOLDER DESCRIBING TOPOGRAPHIC MAPS AND SYMBOLS IS AVAILABLE ON REQUEST



ROAD CLASSIFICATION
Heavy-duty ——— 1 LANE 16 LANE Light-duty ———
Medium-duty ——— 1 LANE 16 LANE Unimproved dirt ———
U. S. Route State Route
USGS Historical File
Topographic Division
FORT WASHAKIE, WYO.
N4300-W10852 5/7.5
1951
PHOTOREVISED 1978
DMA 4270 III SW—SERIES V874

FEB 26 1980

1520

RETURN TO:
USGS AND HISTORICAL MAP ARCHIVES