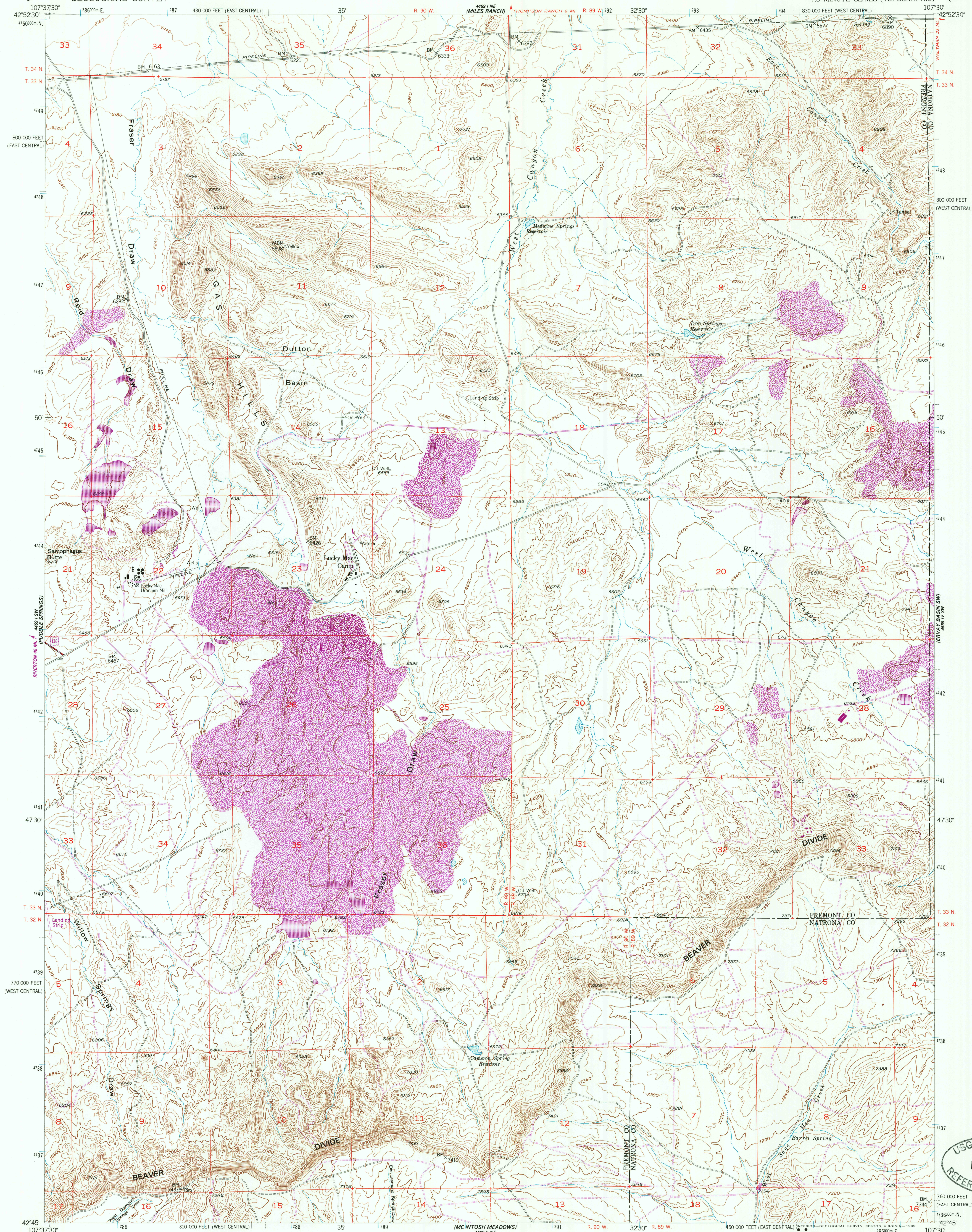


UNITED STATES
DEPARTMENT OF THE INTERIOR
GEOLOGICAL SURVEY

GAS HILLS QUADRANGLE
WYOMING
7.5 MINUTE SERIES (TOPOGRAPHIC)



Mapped, edited, and published by the Geological Survey as part of the Department of the Interior program for the development of the Missouri River Basin.

Control by USGS and NOS/NOAA

Topography from aerial photographs by multiplex methods

Aerial photographs taken 1949. Field check 1952. Revised 1958

Polycyclic projection, 1927 North American Datum

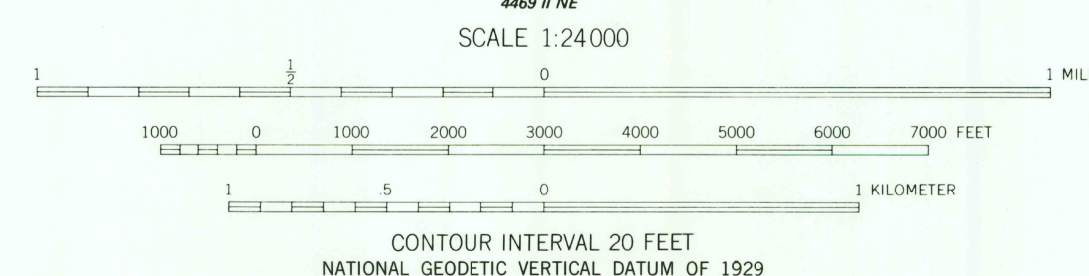
10,000-foot grid based on Wyoming coordinate system, west central and east central zones

1000-meter Universal Transverse Mercator grid ticks, zone 13, shown in blue

Dashed land lines indicate approximate locations

To place on the predicted North American Datum 1983 move the projection lines 8 meters north and 53 meters east as shown by dashed corner ticks

Revisions shown in purple compiled from aerial photographs taken 1980 and other source data. This information not field checked. Map edited 1984



ROAD CLASSIFICATION

Primary highway, hard surface

Secondary highway, hard surface

Light-duty road, hard or improved surface

Unimproved road

Interstate Route

U. S. Route

State Route

GAS HILLS, WYO.
42107-G5-TF-024

1958
PHOTO REVISSED 1984
DMA 4469 I SE-SERIES V874

THIS MAP COMPLIES WITH NATIONAL MAP ACCURACY STANDARDS
FOR SALE BY U.S. GEOLOGICAL SURVEY, DENVER, COLORADO 80225, OR RESTON, VIRGINIA 22092
A FOLDER DESCRIBING TOPOGRAPHIC MAPS AND SYMBOLS IS AVAILABLE ON REQUEST

USGS NMD RESEARCH
DEC 12 1985
REFERENCE COLLECTION