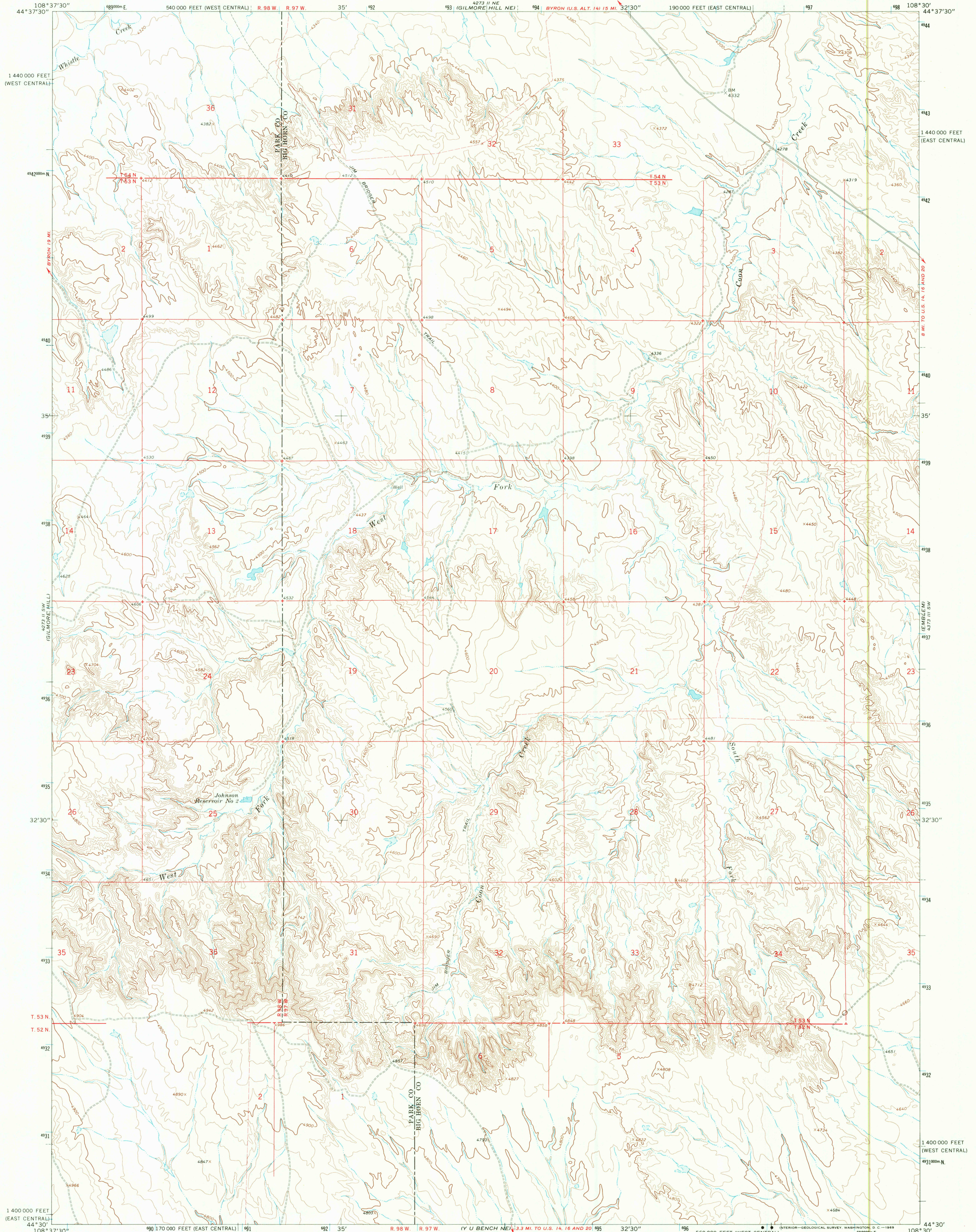


UNITED STATES  
DEPARTMENT OF THE INTERIOR  
GEOLOGICAL SURVEY

GILMORE HILL SE QUADRANGLE  
WYOMING  
7.5 MINUTE SERIES (TOPOGRAPHIC)



Mapped, edited, and published by the Geological Survey

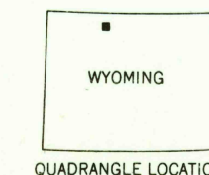
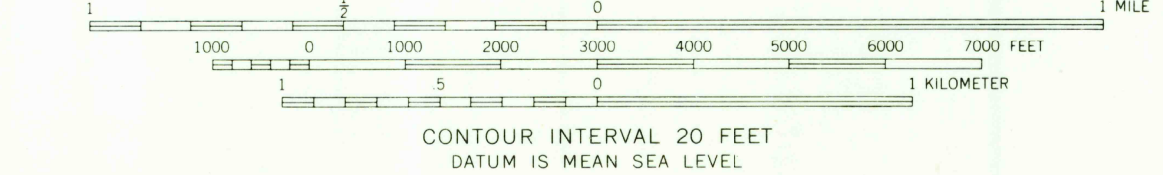
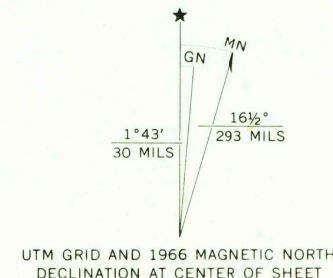
Control by USGS and USC&GS

Topography by photogrammetric methods from aerial photographs taken 1965. Field checked 1966.

Polconic projection. 1927 North American datum  
10,000-foot grids based on Wyoming coordinate system,  
east central and west central zones  
1000-meter Universal Transverse Mercator grid ticks,  
zone 12, shown in blue

Fine red dashed lines indicate selected fence lines

Land lines are omitted in areas of extensive tract surveys



U.S.G.S.

GILMORE HILL SE, WYO.  
N4430—W10830/7.5

TOPOGRAPHIC DIVISION

AMS 4273 II SE—SERIES V874

RETURN TO:  
USGS NAT HISTORICAL MAP ARCHIVES

2680  
AUG 2 2 1969