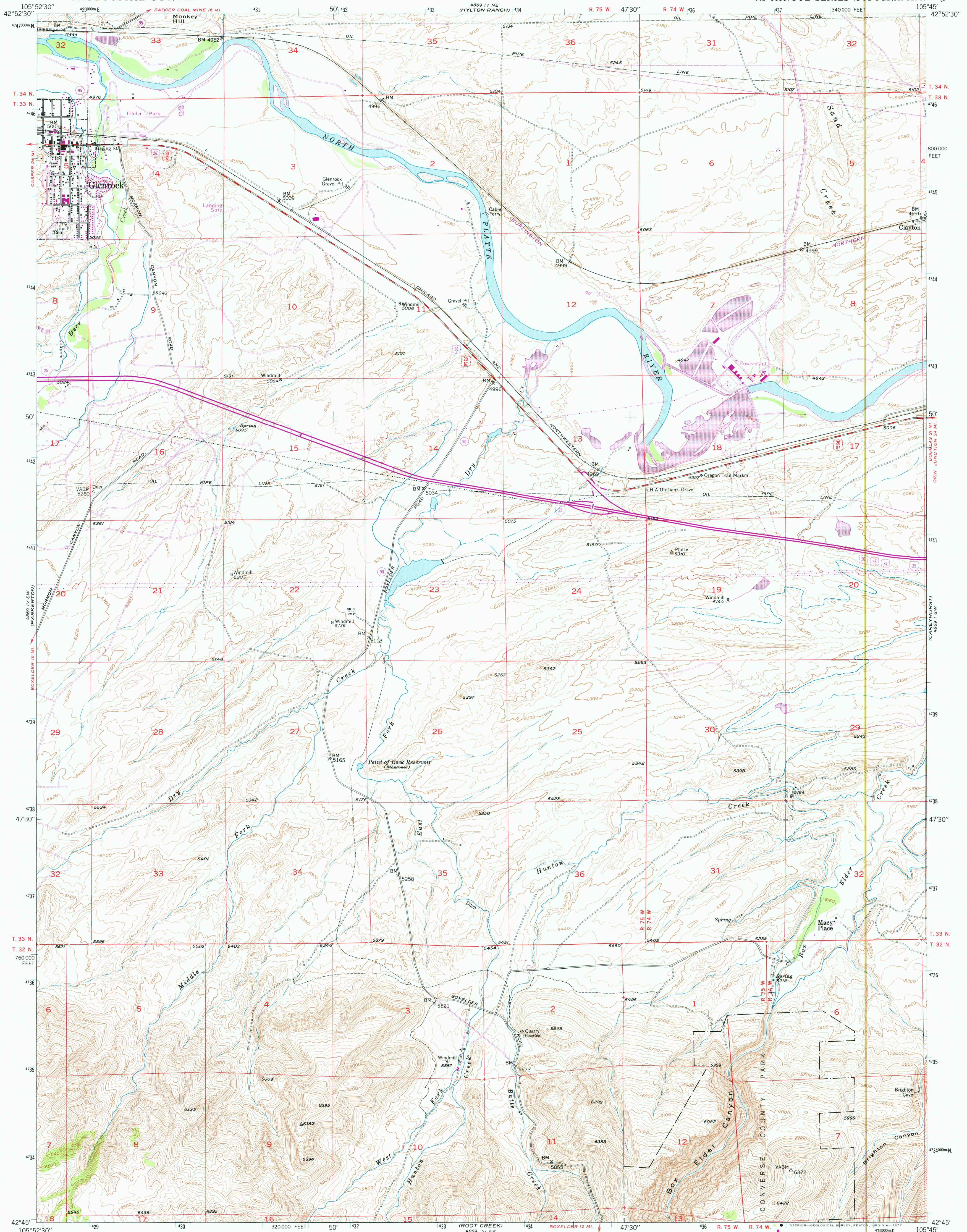


UNITED STATES
DEPARTMENT OF THE INTERIOR
GEOLOGICAL SURVEY

GLENROCK QUADRANGLE
WYOMING-CONVERSE CO.
7.5 MINUTE SERIES (TOPOGRAPHIC)

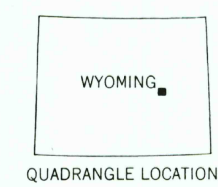
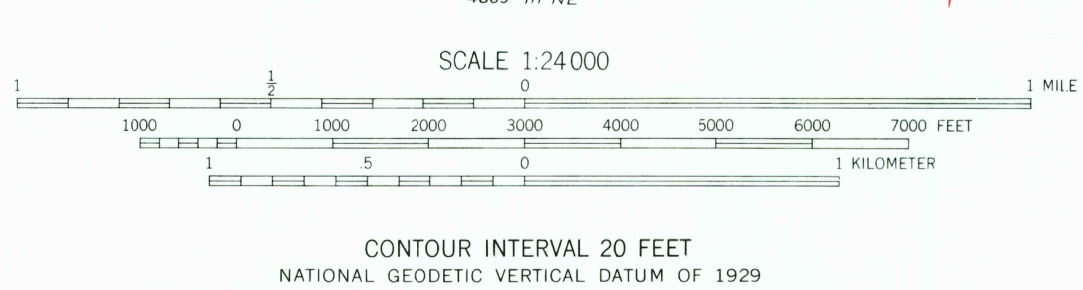
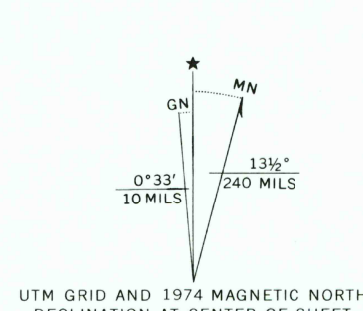


Maped, edited, and published by the Geological Survey
as part of the Department of the Interior program
for the development of the Missouri River Basin
Control by USGS and USC&GS

Topography from aerial photographs by multiplex methods
Aerial photographs taken June 1947. Field check 1949

Polyconic projection. 1927 North American datum
10,000-foot grid based on Wyoming coordinate system,
east zone
1000-meter Universal Transverse Mercator grid ticks,
zone 13, shown in blue

Revisions shown in purple compiled from aerial photographs
taken 1974. This information not field checked



ROAD CLASSIFICATION
Primary highway, all weather, hard surface
Secondary highway, all weather, hard surface
Light duty road, all weather, improved surface
Unimproved road, fair or dry weather
Interstate Route
U. S. Route
State Route

GLENROCK, WYO.
N4245-W10545/7.5

USGS
Historical File
Topographic Division

1949
PHOTO REVISSED 1974
AMS 4869 IV SE-SERIES 9874

AUG 0 1 1977

RETURN TO:
USGS AND HISTORICAL MAP ARCHIVES