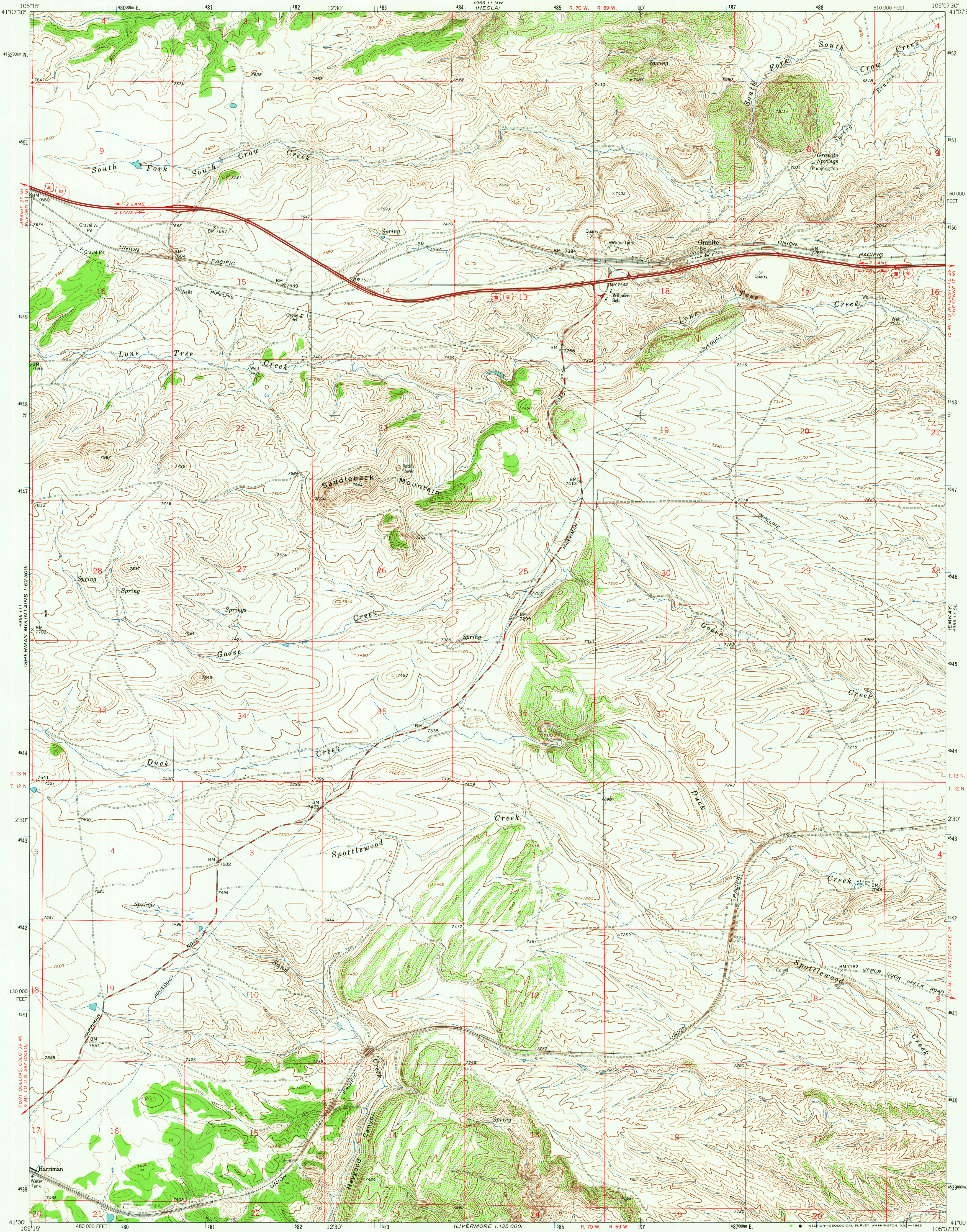


UNITED STATES  
DEPARTMENT OF THE INTERIOR  
GEOLOGICAL SURVEY

GRANITE QUADRANGLE  
WYOMING-LARAMIE CO.  
7.5 MINUTE SERIES (TOPOGRAPHIC)



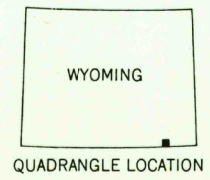
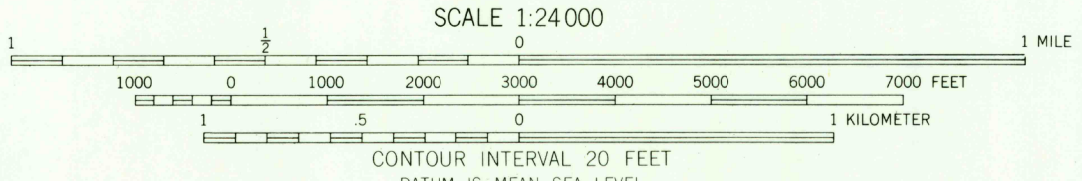
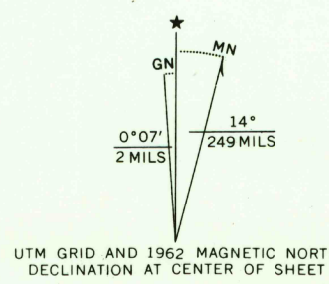
Mapped, edited, and published by the Geological Survey

Control by USGS and USC&GS

Topography by photogrammetric methods from aerial  
photographs taken 1956. Field checked 1962

Polyconic projection. 1927 North American datum  
10,000 foot grid based on Wyoming coordinate system, east zone  
1000 meter Universal Transverse Mercator grid ticks,  
zone 13, shown in blue

Fine red dashed lines indicate selected fence lines



U.S.G.S.  
FILE COPY  
TOPOGRAPHIC DIVISION

ROAD CLASSIFICATION  
Heavy-duty ——— Light-duty ———  
Medium-duty ——— Unimproved dirt ———  
Interstate Route ——— U.S. Route ———

GRANITE, WYO.  
N4100 - W10507.5/7.5

1962

AMS 4966 11 SW - SERIES V874

2230

JAN 4 1962

RETURN TO:  
USGS AND HISTORICAL MAP ARCHIVES