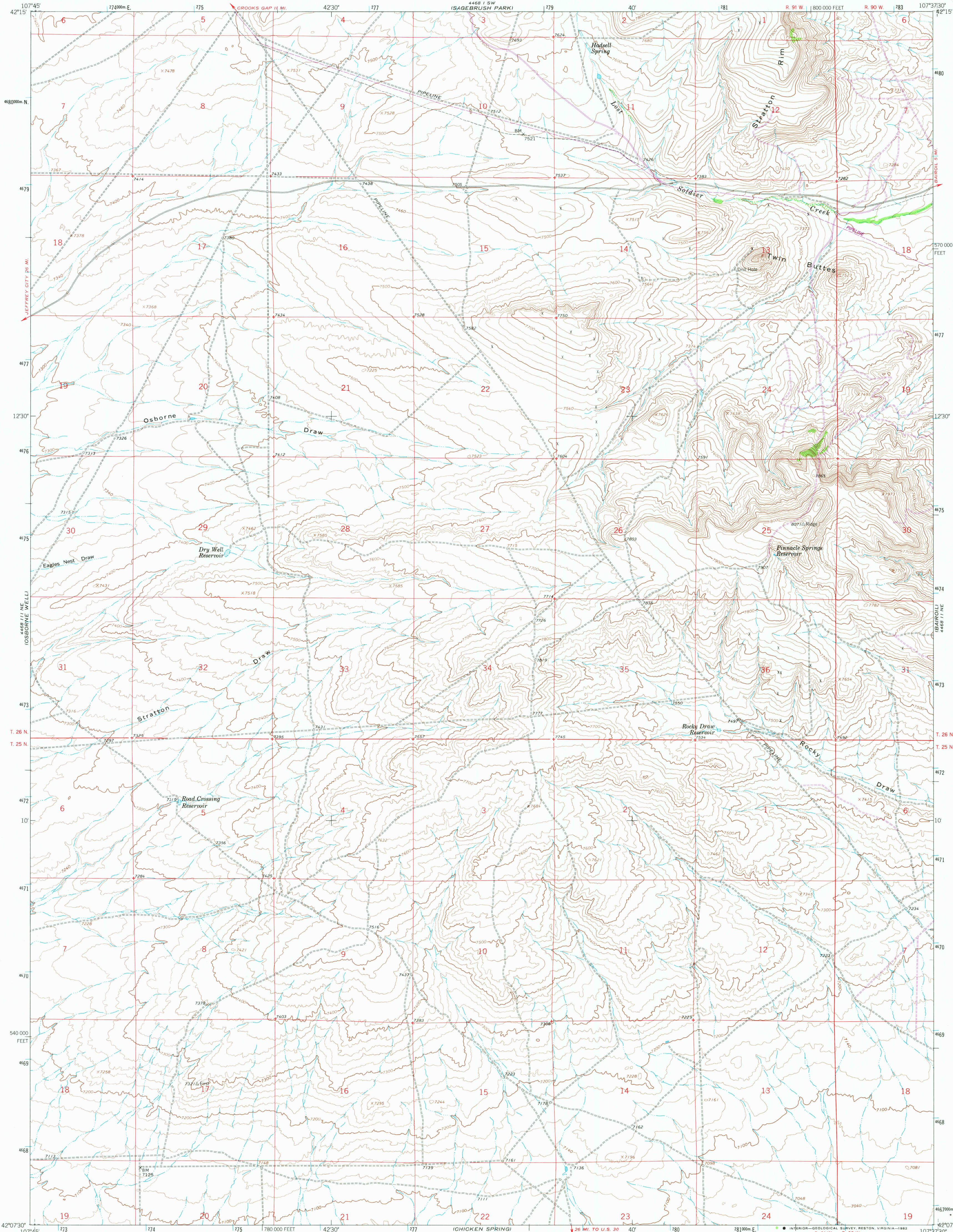


UNITED STATES  
DEPARTMENT OF THE INTERIOR  
GEOLOGICAL SURVEY

HADSELL SPRING QUADRANGLE  
WYOMING-SWEETWATER CO.  
7.5 MINUTE SERIES (TOPOGRAPHIC)



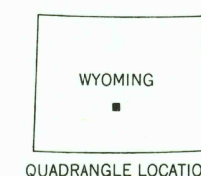
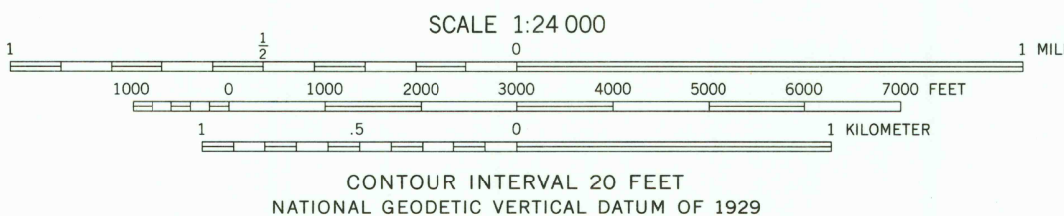
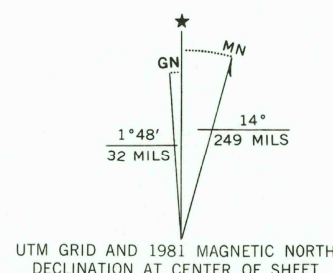
Mapped, edited, and published by the Geological Survey

Control by USGS and NOS/NOAA

Topography by photogrammetric methods from aerial  
photographs taken 1960. Field checked 1961

Polyconic projection. 1927 North American datum  
10,000-foot grid based on Wyoming coordinate system, west central zone  
1000-meter Universal Transverse Mercator grid ticks,  
zone 13, shown in blue

To place on the predicted North American Datum 1983  
move the projection lines 8 meters north and  
53 meters east as shown by dashed corner ticks



ROAD CLASSIFICATION  
Light-duty ..... Unimproved dirt .....

THIS MAP COMPLIES WITH NATIONAL MAP ACCURACY STANDARDS  
FOR SALE BY U. S. GEOLOGICAL SURVEY, DENVER, COLORADO 80225, OR RESTON, VIRGINIA 22092  
A FOLDER DESCRIBING TOPOGRAPHIC MAPS AND SYMBOLS IS AVAILABLE ON REQUEST

Revisions shown in purple compiled from aerial photographs  
taken 1980 and other source data. This information not  
field checked. Map edited 1981

HADSELL SPRING, WYO.  
N4207.5 - W10737.5/7.5

1961  
PHOTOREVISED 1981  
DMA 4468 11 NW - SERIES V874

RETURN TO:  
USGS AND HISTORICAL MAP ARCHIVES

MAR 21 1983

2150