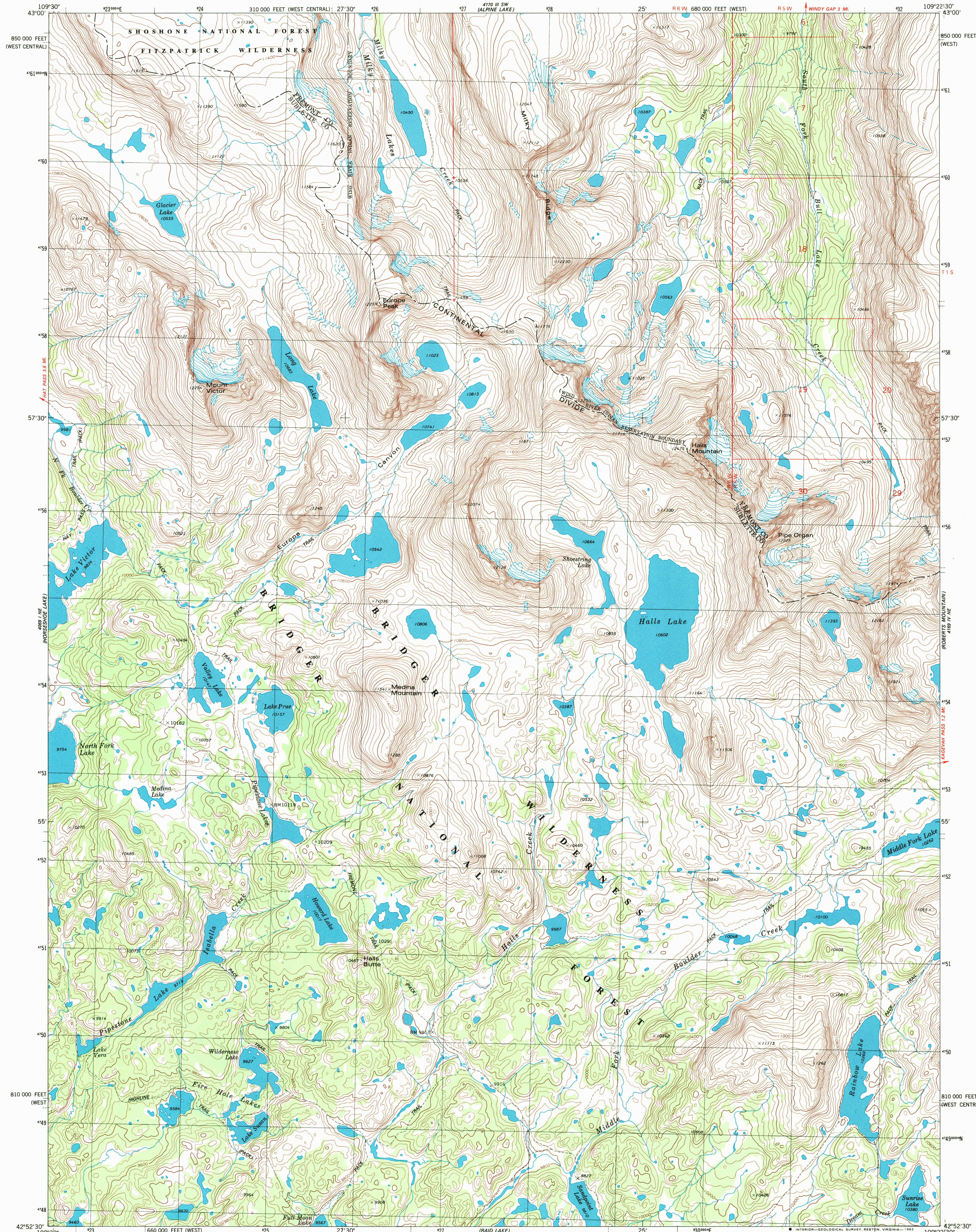


UNITED STATES  
DEPARTMENT OF THE INTERIOR  
GEOLOGICAL SURVEY

HALLS MOUNTAIN QUADRANGLE  
WYOMING  
7.5 MINUTE SERIES (TOPOGRAPHIC)

NW 1/4 MT. BONNEVILLE 15' QUADRANGLE



Mapped, edited, and published by the Geological Survey

Control by USGS and NOS/NOAA

Topography by photogrammetric methods from aerial photographs taken 1974. Field checked 1976. Map edited 1981

Projection: Wyoming coordinate system, west zone (transverse Mercator)

10,000-foot grid ticks based on Wyoming coordinate system, west and west central zones

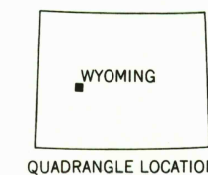
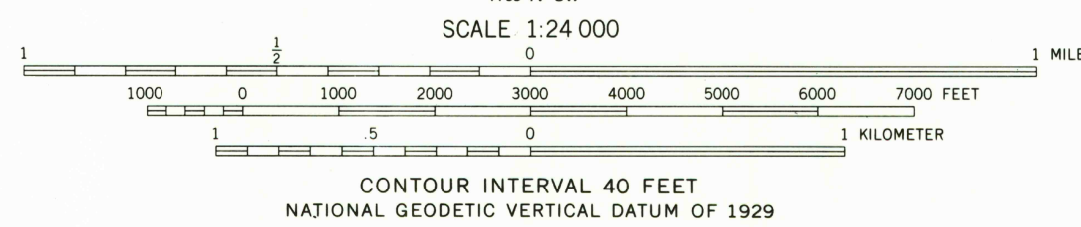
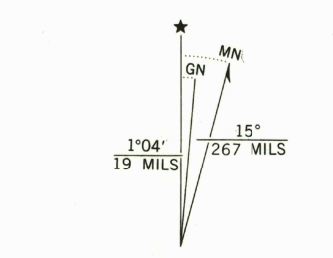
1000-meter Universal Transverse Mercator grid, zone 12

1927 North American datum

To place on the predicted North American Datum 1983 move the projection lines 10 meters north and 58 meters east as shown by dashed corner ticks

Where omitted, land lines have not been established

There may be private inholdings within the boundaries of the National or State reservations shown on this map



ROAD CLASSIFICATION	
Primary highway, hard surface	Light-duty road, hard or improved surface
Secondary highway, hard surface	Unimproved road
Interstate Route	U. S. Route
	State Route

HALLS MOUNTAIN, WYO.  
NW 1/4 MT. BONNEVILLE 15' QUADRANGLE  
N4252.5—W10922.5/7.5

1981

DMA 4169 IV NW—SERIES V874

THIS MAP COMPLIES WITH NATIONAL MAP ACCURACY STANDARDS  
FOR SALE BY U. S. GEOLOGICAL SURVEY, DENVER, COLORADO 80225, OR RESTON, VIRGINIA 22092  
A FOLDER DESCRIBING TOPOGRAPHIC MAPS AND SYMBOLS IS AVAILABLE ON REQUEST

