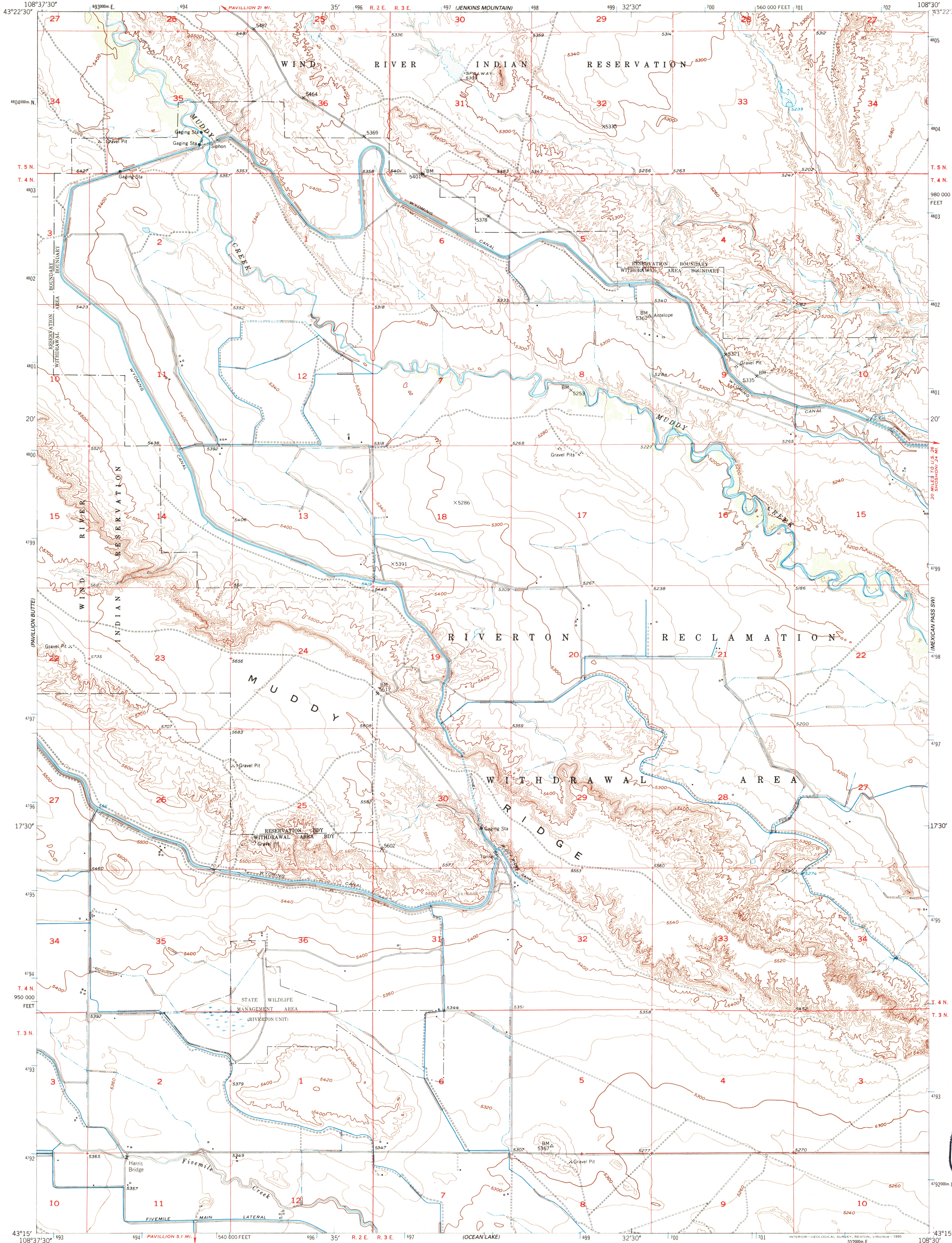
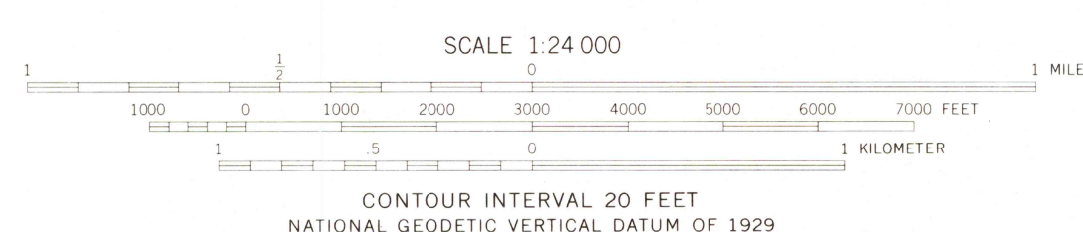
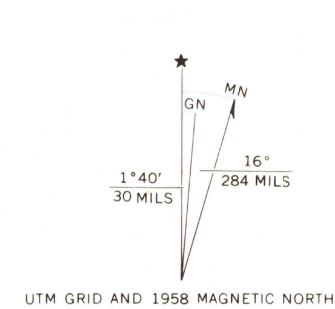


UNITED STATES
DEPARTMENT OF THE INTERIOR
GEOLOGICAL SURVEY

HARRIS BRIDGE QUADRANGLE
WYOMING-FREMONT CO.
7.5 MINUTE SERIES (TOPOGRAPHIC)



Produced by the United States Geological Survey in cooperation with the Bureau of Reclamation as part of the Department of the Interior program for the development of the Missouri River Basin
Control by USGS and NOS/NOAA
Compiled from aerial photographs taken 1948-1950. Topography by plane-table surveys 1944. Field checked 1950. Revised 1958
North American Datum of 1927 (NAD 27). Projection and 10000-foot ticks: Wyoming Coordinate System, west central zone (Transverse Mercator)
Blue 1000-meter Universal Transverse Mercator ticks, zone 12
North American Datum of 1983 (NAD 83) is shown by dashed corner ticks. The values of the shift between NAD 27 and NAD 83 for 7.5-minute intersections are obtainable from National Geodetic Survey NADCON software
There may be private inholdings within the boundaries of the National or State reservations shown on this map



ROAD CLASSIFICATION
Light duty ————— Unimproved dirt —————

HARRIS BRIDGE, WY
43108-C5-TF-024

1958
DMA 4270 1 SE-SERIES V874

USGS NHD HISTORICAL
MAP ARCHIVES
AUG 11 1995
REC'D FILE COPY

