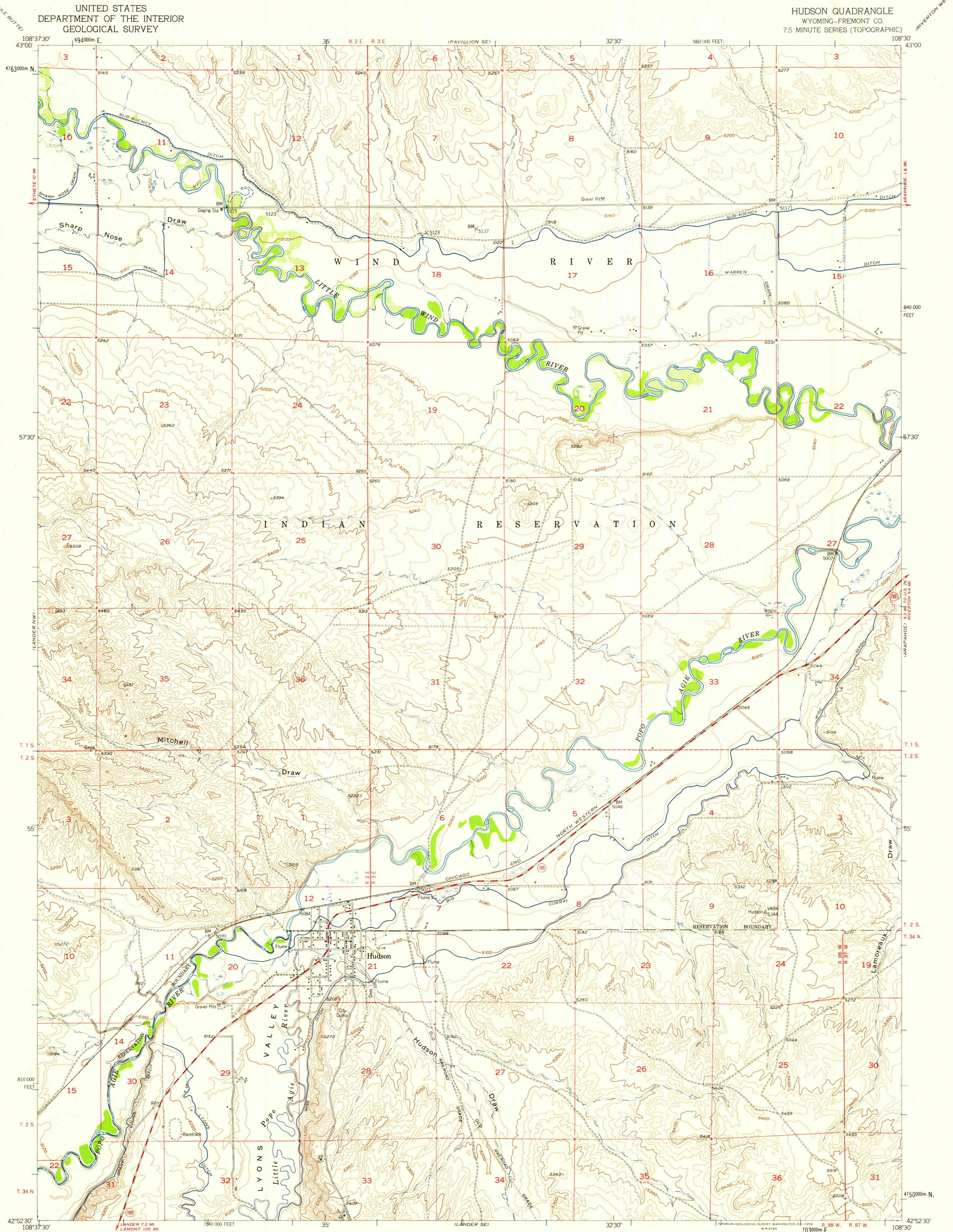


UNITED STATES
DEPARTMENT OF THE INTERIOR
GEOLOGICAL SURVEY

HUDSON QUADRANGLE
WYOMING-FREMONT CO.
7.5 MINUTE SERIES (TOPOGRAPHIC)

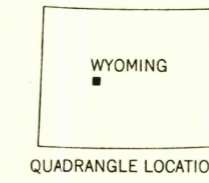
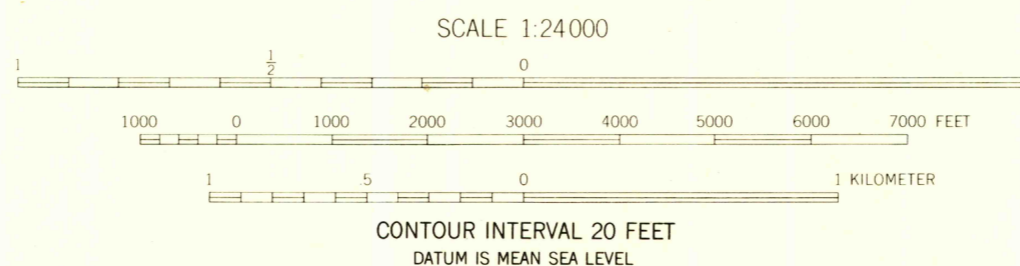


Mapped, edited, and published by the Geological Survey
as part of the Department of Interior program
for the development of the Missouri River Basin
Control by USGS and USC&GS

Topography from aerial photographs by multiplex methods
and by plane-table surveys 1952. Aerial photographs taken 1949
Revised 1957

Polyconic projection. 1927 North American datum
10,000-foot grid based on Wyoming coordinate system,
west central zone
1000-meter Universal Transverse Mercator grid ticks,
zone 12, shown in blue
Dashed land lines indicate approximate locations

TRUE NORTH
MAGNETIC NORTH
APPROXIMATE MEAN
DECLINATION, 1957



ROAD CLASSIFICATION
Medium-duty Light-duty
Unimproved dirt
State Route

U.S.G.S.
FILE COPY
TOPOGRAPHIC DIVISION

HUDSON, WYO.
N4252.5-W10830.7.5
1957

THIS MAP COMPLIES WITH NATIONAL MAP ACCURACY STANDARDS
FOR SALE BY U. S. GEOLOGICAL SURVEY, FEDERAL CENTER, DENVER, COLORADO OR WASHINGTON 25, D. C.
A FOLDER DESCRIBING TOPOGRAPHIC MAPS AND SYMBOLS IS AVAILABLE ON REQUEST

RETURN TO:
USGS AND HISTORICAL MAP ARCHIVES

MAY 27 1958

1945