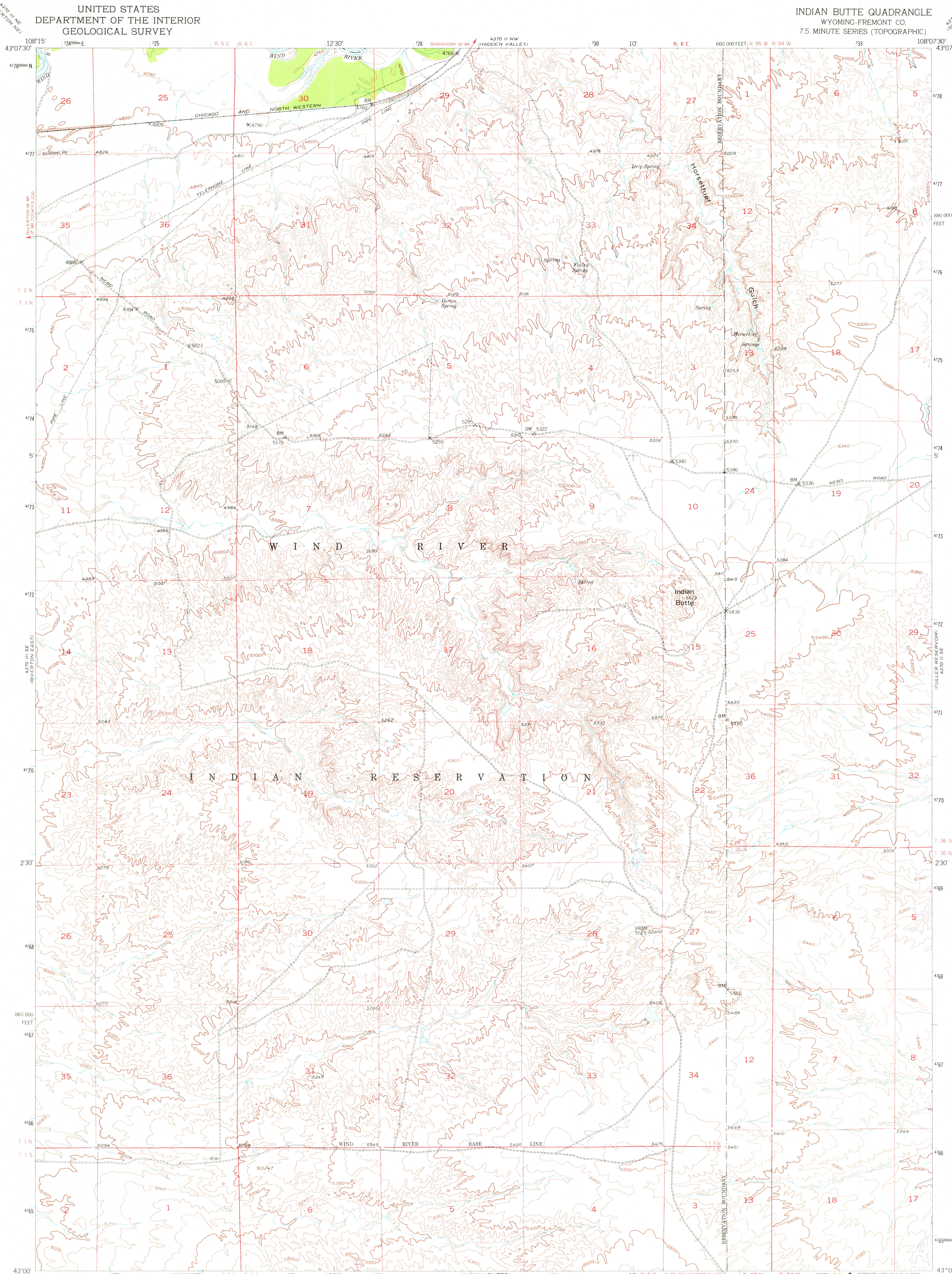


UNITED STATES  
DEPARTMENT OF THE INTERIOR  
GEOLOGICAL SURVEY

INDIAN BUTTE QUADRANGLE  
WYOMING-FREMONT CO.  
7.5 MINUTE SERIES (TOPOGRAPHIC)



Mapped, edited, and published by the Geological Survey as part of the Department of the Interior program for the development of the Missouri River Basin.

Control by USGS and USC&GS

Topography from aerial photographs by multiplex methods by Tennessee Valley Authority. Aerial photographs taken 1948

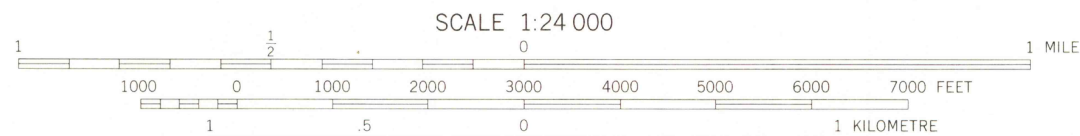
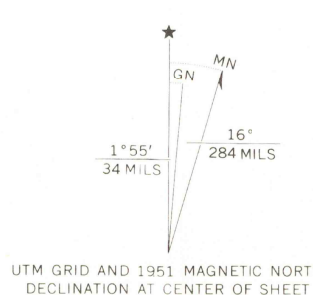
Field check 1951

Polyconic projection. 1927 North American datum

10,000-foot grid based on Wyoming coordinate system, west central zone

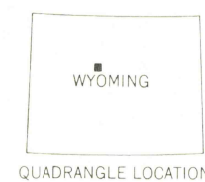
Dashed land lines indicate approximate locations

1000-metre Universal Transverse Mercator grid ticks, zone 12, shown in blue



CONTOUR INTERVAL 20 FEET  
NATIONAL GEODETIC VERTICAL DATUM OF 1929

THIS MAP COMPLIES WITH NATIONAL MAP ACCURACY STANDARDS  
FOR SALE BY U. S. GEOLOGICAL SURVEY, DENVER, COLORADO 80225, OR RESTON, VIRGINIA 22092  
A FOLDER DESCRIBING TOPOGRAPHIC MAPS AND SYMBOLS IS AVAILABLE ON REQUEST



ROAD CLASSIFICATION

Heavy-duty	4 LANE 16 LANE	Light-duty
Medium-duty	4 LANE 16 LANE	Unimproved dirt
U. S. Route		State Route

INDIAN BUTTE, WYO.  
N4300—W10807.5/7.5

USGS  
Historical File  
Topographic Division

1951  
AMS 4370 II SW—SERIES V874

RETURN TO:  
USGS AND HISTORICAL MAP ARCHIVES