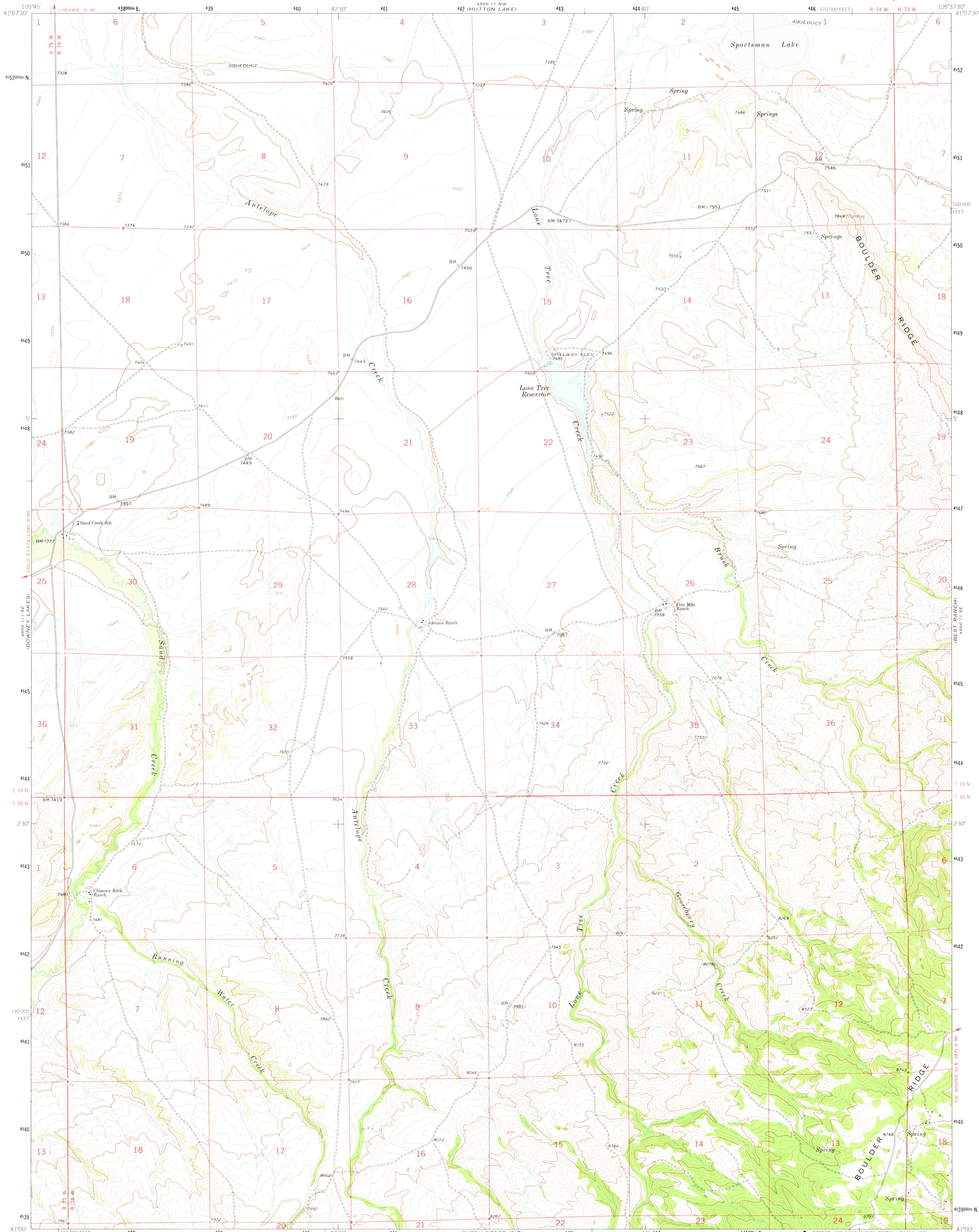


UNITED STATES
DEPARTMENT OF THE INTERIOR
GEOLOGICAL SURVEY

JOHNSON RANCH QUADRANGLE
WYOMING-ALBANY CO.
7.5 MINUTE SERIES (TOPOGRAPHIC)



Mapped, edited, and published by the Geological Survey
as part of the Department of the Interior program
for the development of the Missouri River Basin

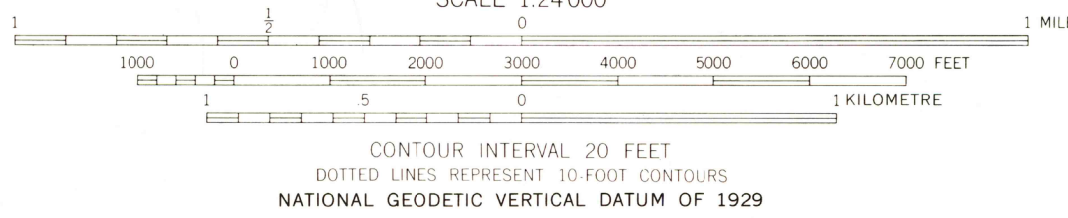
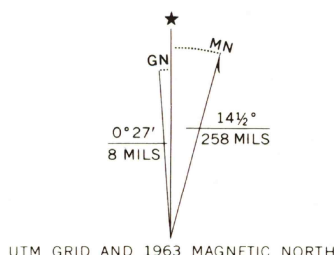
Control by USGS and USC&GS

Topography by photogrammetric methods from aerial
photographs taken 1961. Field checked 1963

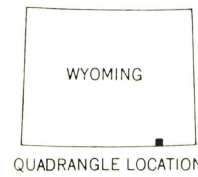
Polyconic projection. 1927 North American datum
10,000-foot grid based on Wyoming coordinate system, east zone
1000 metre Universal Transverse Mercator grid ticks,
zone 13, shown in blue

Fine red dashed lines indicate selected fence lines

Area covered by dashed light blue pattern is subject
to controlled inundation



THIS MAP COMPLIES WITH NATIONAL MAP ACCURACY STANDARDS
FOR SALE BY U. S. GEOLOGICAL SURVEY, DENVER, COLORADO 80225, OR RESTON, VIRGINIA 22092
A FOLDER DESCRIBING TOPOGRAPHIC MAPS AND SYMBOLS IS AVAILABLE ON REQUEST



ROAD CLASSIFICATION
Light-duty ————— Unimproved dirt =====

USGS
Historical File
Topographic Division

JOHNSON RANCH, WYO.
N4100-W10537.5/7.5
1963
AMS 4866 11 SW-SERIES V874

RETURN TO:
USGS AND HISTORICAL MAP ARCHIVES

3500