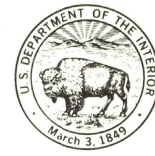


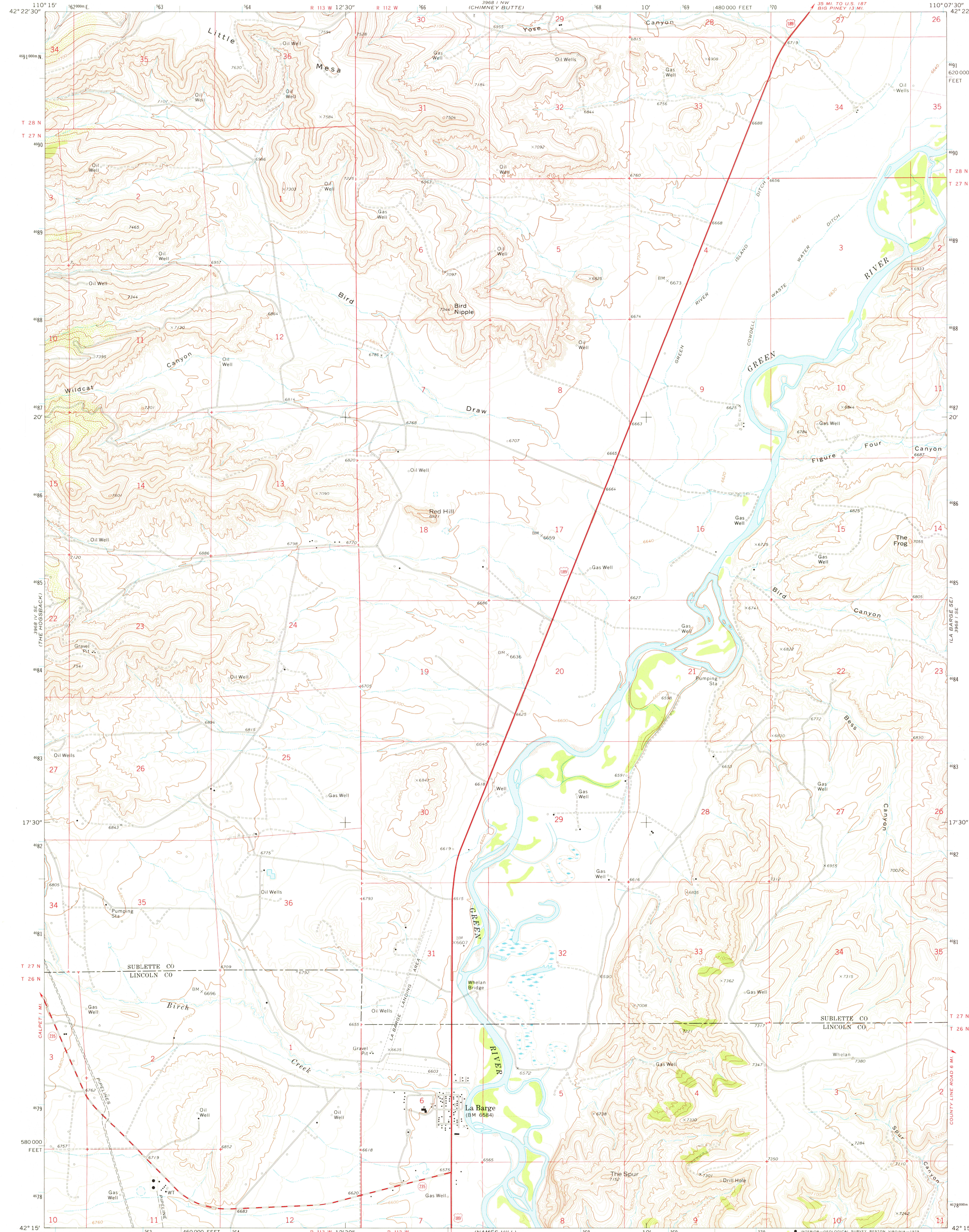
3968 IV NE
(CHIMNEY BUTTE)

UNITED STATES
DEPARTMENT OF THE INTERIOR
GEOLOGICAL SURVEY

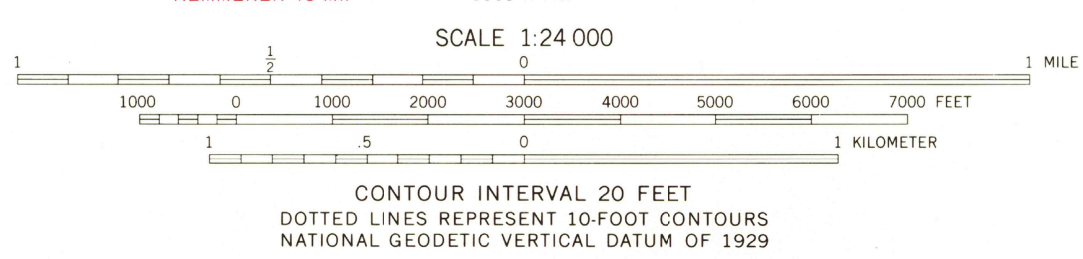
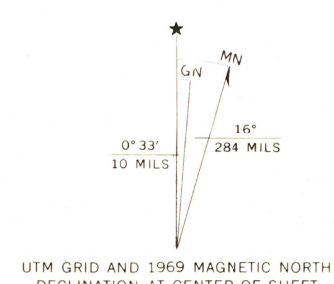


LA BARGE QUADRANGLE
WYOMING
7.5 MINUTE SERIES (TOPOGRAPHIC)

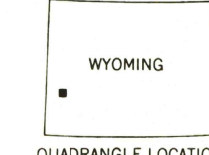
3968 I NE
(MILLESON DRAW)



Mapped, edited, and published by the Geological Survey
Control by USGS and USC&GS
Topography by photogrammetric methods from aerial
photographs taken 1968. Field checked 1969
Polyconic projection. 1927 North American datum
10,000-foot grid based on Wyoming coordinates system,
west zone
1000-meter Universal Transverse Mercator grid ticks,
zone 12, shown in blue
Fine red dashed lines indicate selected fence lines
Where omitted, land lines have not been established



SCALE 1:24 000
CONTOUR INTERVAL 20 FEET
DOTTED LINES REPRESENT 10-FOOT CONTOURS
NATIONAL GEODETIC VERTICAL DATUM OF 1929



ROAD CLASSIFICATION

Primary highway, hard surface	Light-duty road, hard or improved surface
Secondary highway, hard surface	Unimproved road
Interstate Route	U.S. Route
	State Route

LA BARGE, WYO.
N4215-W11007.5/7.5
1969

DMA 3968 I SW-SERIES V874

THIS MAP COMPLIES WITH NATIONAL MAP ACCURACY STANDARDS
FOR SALE BY U. S. GEOLOGICAL SURVEY, DENVER, COLORADO 80225, OR RESTON, VIRGINIA 22092
A FOLDER DESCRIBING TOPOGRAPHIC MAPS AND SYMBOLS IS AVAILABLE ON REQUEST

RETURN TO:
USGS AND HISTORICAL MAP ARCHIVES

JUL 18 1979

3300