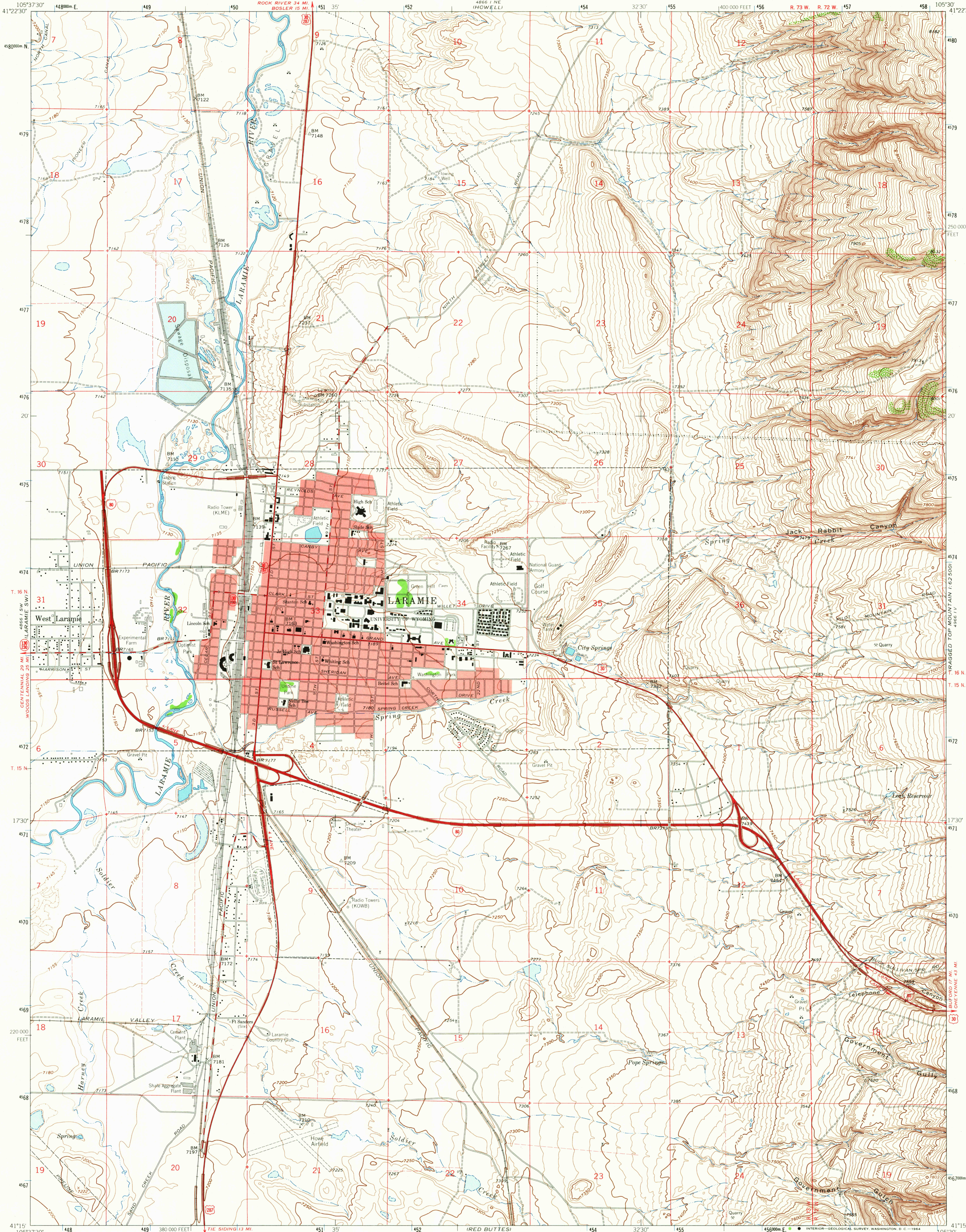


UNITED STATES
DEPARTMENT OF THE INTERIOR
GEOLOGICAL SURVEY

LARAMIE QUADRANGLE
WYOMING-ALBANY CO.
7.5 MINUTE SERIES (TOPOGRAPHIC)



Mapped, edited, and published by the Geological Survey
as part of the Department of the Interior program
for the development of the Missouri River Basin

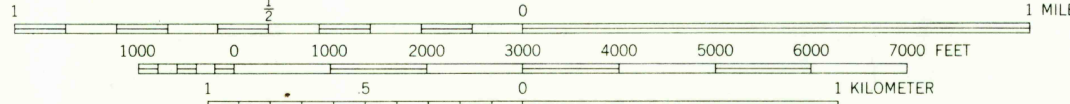
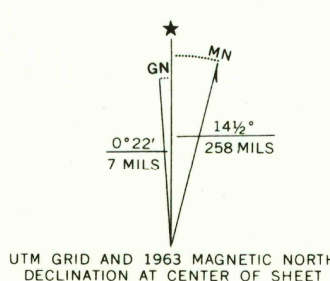
Control by USGS, USCGS, and Wyoming Geodetic Survey

Topography by photogrammetric methods from aerial
photographs taken 1961. Field checked 1963

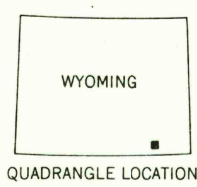
Polyconic projection. 1927 North American datum
10,000-foot grid based on Wyoming coordinate system, east zone
1000-meter Universal Transverse Mercator grid ticks,
zone 13, shown in blue

Red tint indicates areas in which only landmark buildings are shown

Fine red dashed lines indicate selected fence lines



CONTOUR INTERVAL 10 FEET
DOTTED LINES REPRESENT 5-FOOT CONTOURS
DATUM IS MEAN SEA LEVEL



ROAD CLASSIFICATION			
Heavy-duty	Light-duty	Unimproved dirt	
Medium-duty	Unimproved dirt		
Interstate Route	U.S. Route	State Route	

LARAMIE, WYO.
N4115-W10530/7.5

1963

AMS 4866 I SE-SERIES 874

RETURN TO:
USGS AND HISTORICAL MAP ARCHIVES

AUG 4 1964

2650