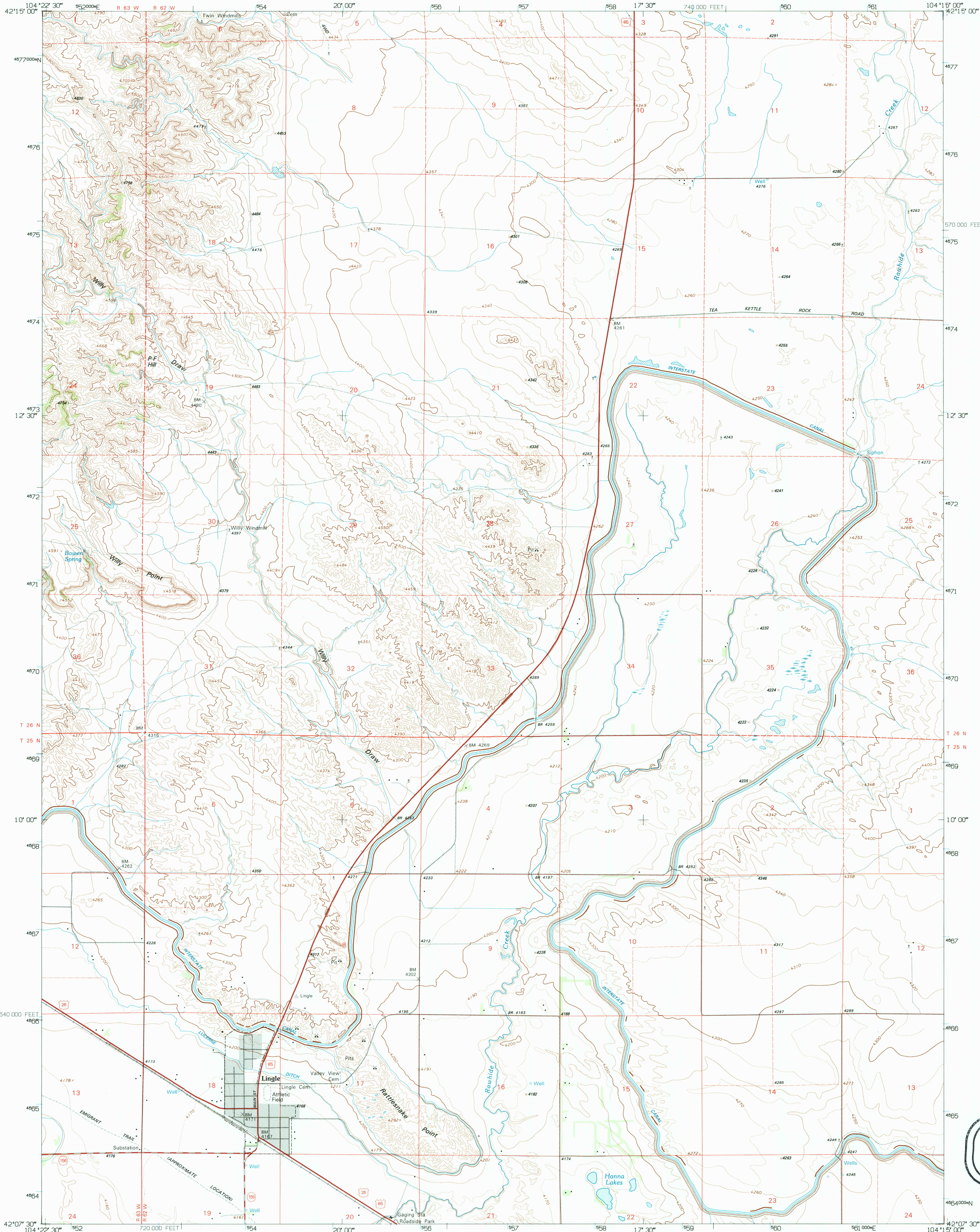
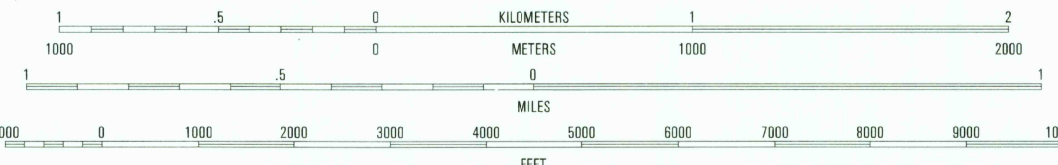
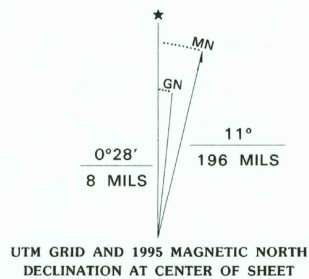


UNITED STATES
DEPARTMENT OF THE INTERIOR
GEOLOGICAL SURVEY

LINGLE QUADRANGLE
WYOMING-GOSHEN CO.
7.5-MINUTE SERIES (TOPOGRAPHIC)

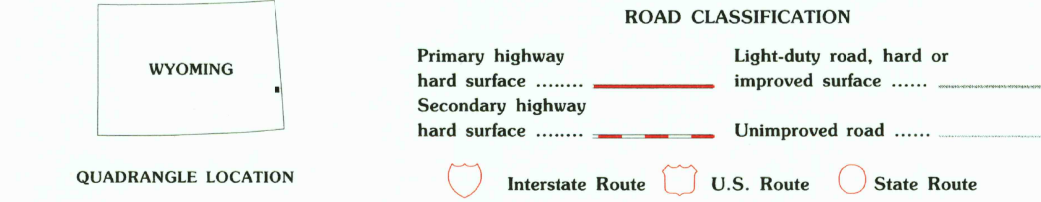


Produced by the United States Geological Survey
Control by USGS and NOS/NOAA
Compiled from imagery dated 1962. Revised from imagery dated 1990. PLSS and survey control current as of 1963
Map edited 1995. Contours and land elevations have not been revised and may conflict with other content
North American Datum of 1927 (NAD 27). Projection and blue 1000-meter ticks: Universal Transverse Mercator, zone 13
10 000-foot ticks: Wyoming Coordinate System, east zone
North American Datum of 1983 (NAD 83) is shown by dashed corner ticks. The values of the shift between NAD 27 and NAD 83 for 7.5-minute intersections are obtainable from National Geodetic Survey NADCON software
Fine red dashed lines indicate selected fence and field lines where generally visible on aerial photographs. This information is unchecked



CONTOUR INTERVAL 20 FEET
SUPPLEMENTARY CONTOUR INTERVAL 10 FEET
NATIONAL GEODETIC VERTICAL DATUM OF 1929
TO CONVERT FEET TO METERS MULTIPLY BY 0.3048
TO CONVERT METERS TO FEET MULTIPLY BY 3.2808

THIS MAP COMPLIES WITH NATIONAL MAP ACCURACY STANDARDS
FOR SALE BY U.S. GEOLOGICAL SURVEY
DENVER, COLORADO 80225, OR RESTON, VIRGINIA 22092
A FOLDER DESCRIBING TOPOGRAPHIC MAPS AND SYMBOLS IS AVAILABLE ON REQUEST



1	2	3	1 Red Cloud Creek West
4	5	5 Spout Butte SW	2 Red Cloud Creek East
6	7	8 Torrington	3 Spout Butte SW
			4 Barnes
			5 Tea Kettle Rock
			6 Hahig Spring
			7 Gutter
			8 Torrington

LINGLE, WY
42104-B3-TF-024
1990

DMA 5168 III NE- SERIES V874

USGS AND HISTORICAL
MAP ARCHIVES
SEP 22 1995
REC'D FILE COPY

