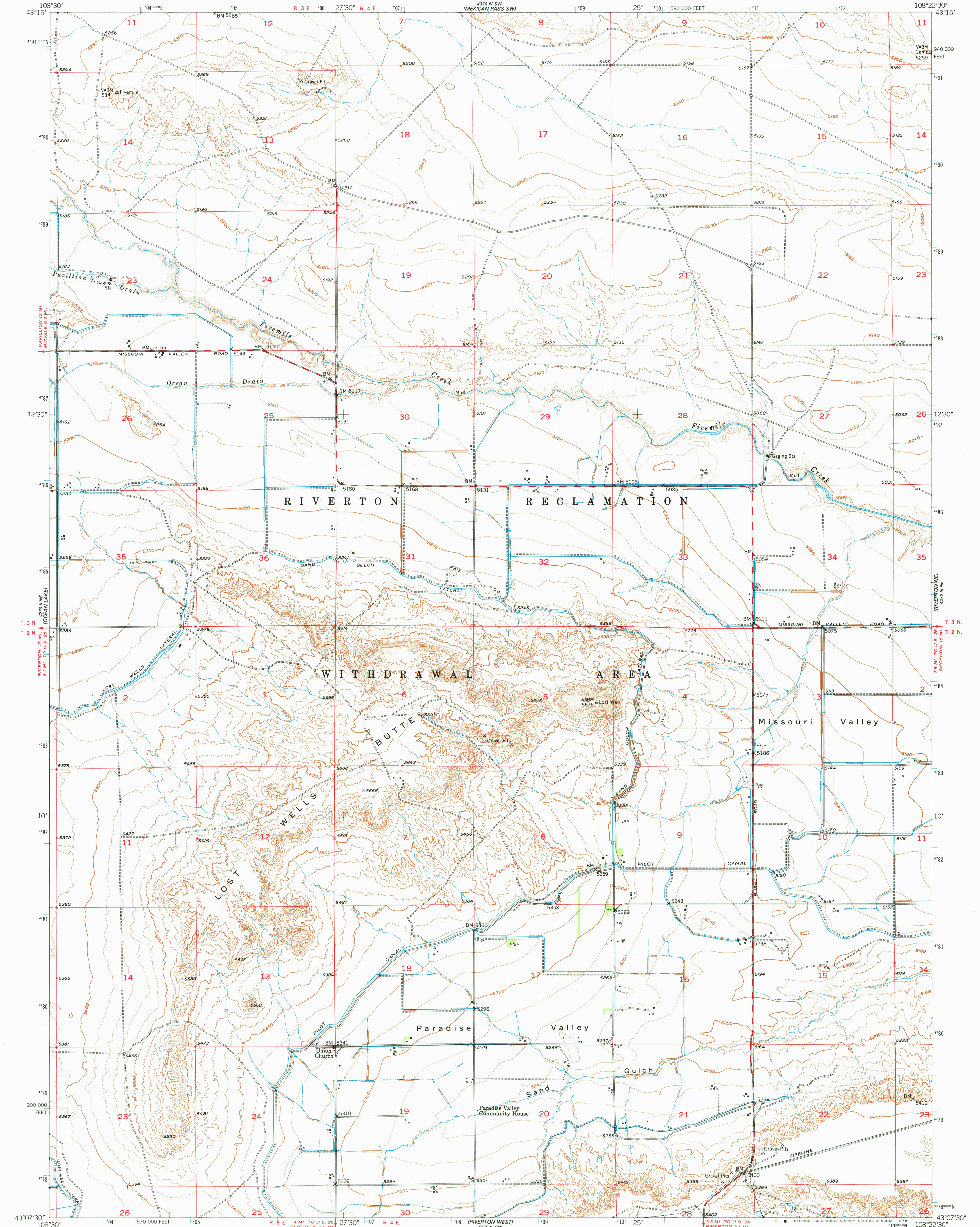
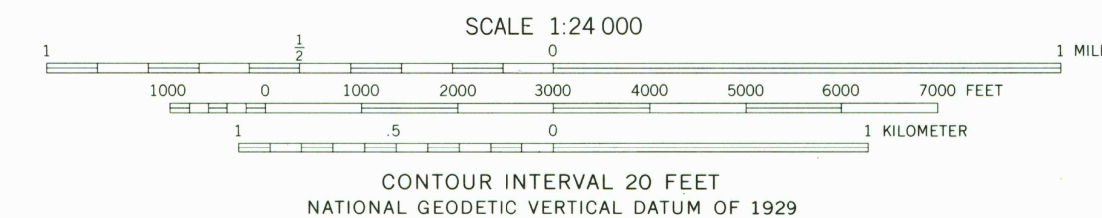


UNITED STATES
DEPARTMENT OF THE INTERIOR
GEOLOGICAL SURVEY

LOST WELLS BUTTE QUADRANGLE
WYOMING-FREMONT CO.
7.5 MINUTE SERIES (TOPOGRAPHIC)



Map by the Geological Survey and Bureau of Reclamation
Edited and published by the Geological Survey as part of the
Department of the Interior program for the development of the
Missouri River Basin
Control by USGS and USC&GS
Topography compiled from aerial photographs taken 1948
and by plane-table surveys 1921. Field check 1950. Revised 1958
Polyconic projection. 1927 North American datum
10,000-foot grid based on Wyoming coordinate system,
west central zone
1000-meter Universal Transverse Mercator grid ticks,
zone 12, shown in blue



ROAD CLASSIFICATION
Medium-duty ——— Light-duty ———
USGS
Historical File
Topographic Division

LOST WELLS BUTTE, WYO.
N4307.5-W10822.5/7.5

JUL 20 1978
1300

1958
AMS 4370 111 NW—SERIES Y874

THIS MAP COMPLIES WITH NATIONAL MAP ACCURACY STANDARDS
FOR SALE BY U. S. GEOLOGICAL SURVEY, DENVER, COLORADO 80225, OR RESTON, VIRGINIA 22092
A FOLDER DESCRIBING TOPOGRAPHIC MAPS AND SYMBOLS IS AVAILABLE ON REQUEST

RETURN TO:
USGS AND HISTORICAL MAP ARCHIVES