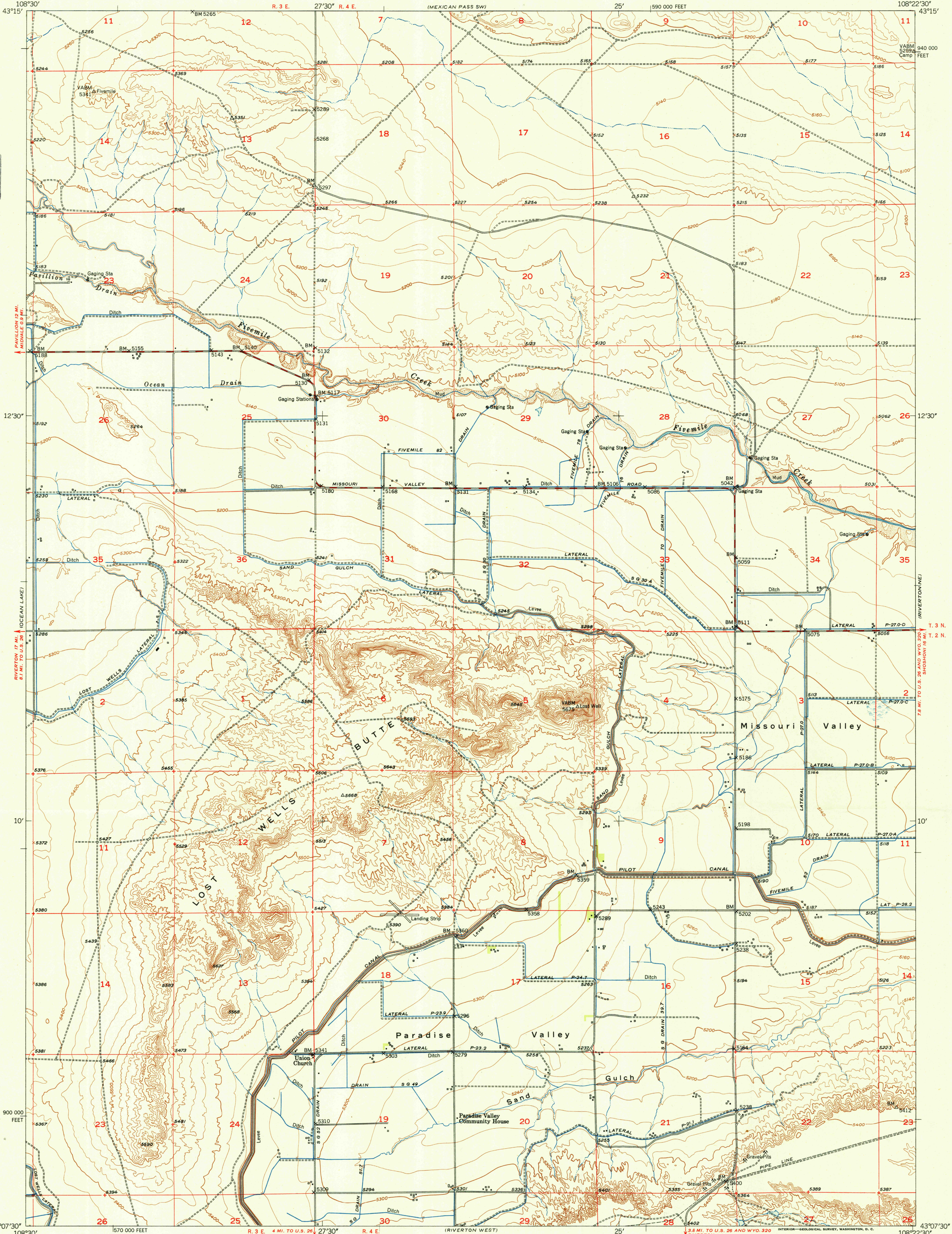
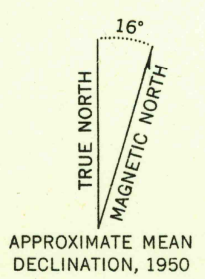


UNITED STATES
DEPARTMENT OF THE INTERIOR
GEOLOGICAL SURVEY

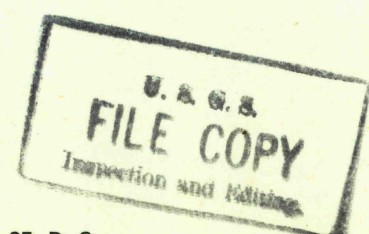
LOST WELLS BUTTE QUADRANGLE
WYOMING-FREMONT CO.
7.5 MINUTE SERIES (TOPOGRAPHIC)



Map by the Geological Survey and Bureau of Reclamation
Edited and published by the Geological Survey as part of the
Department of the Interior program for the development of the
Missouri River Basin
Control by USGS and USC&GS
Culture and drainage in part compiled from aerial
photographs taken October 1948. Field check 1950
Topography by plane-table methods 1921
Polyconic projection. 1927 North American datum
10,000-foot grid based on Wyoming coordinate system,
west central zone



SCALE 1:24000
1 0 1000 2000 3000 4000 5000 6000 7000 FEET
1 0 1 2 3 4 5 6 7 8 9 10 KILOMETER
CONTOUR INTERVAL 20 FEET
DATUM IS MEAN SEA LEVEL
THIS MAP COMPLIES WITH NATIONAL MAP ACCURACY STANDARDS
FOR SALE BY U. S. GEOLOGICAL SURVEY, FEDERAL CENTER, DENVER, COLORADO OR WASHINGTON 25, D. C.
A FOLDER DESCRIBING TOPOGRAPHIC MAPS AND SYMBOLS IS AVAILABLE ON REQUEST



ROAD CLASSIFICATION
Heavy-duty 4 LANE 16 LANE Light-duty
Medium-duty 4 LANE 16 LANE Unimproved dirt
U. S. Route State Route

LOST WELLS BUTTE, WYO.
N4307.5-W10822.5/7.5
EDITION OF 1952

RETURN TO:
USGS AND HISTORICAL MAP ARCHIVES

MAY 1 1952