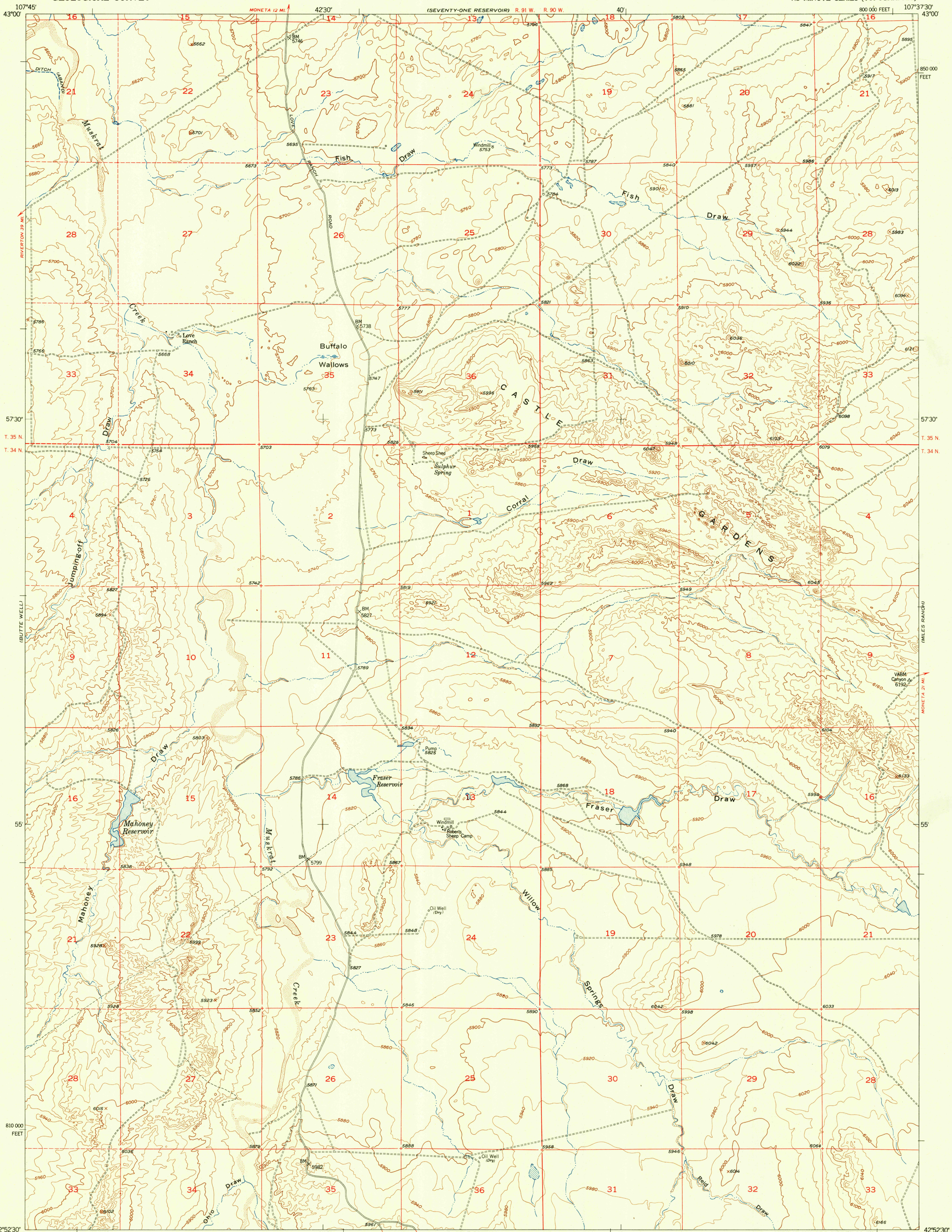


UNITED STATES
DEPARTMENT OF THE INTERIOR
GEOLOGICAL SURVEY

U. S. G. S.
FILE COPY
Inspection and Editing

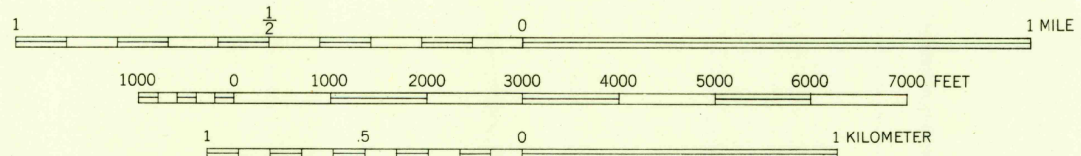
LOVE RANCH QUADRANGLE
WYOMING-FREMONT CO.
7.5 MINUTE SERIES (TOPOGRAPHIC)

(MONETA SE)

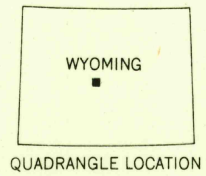


Mapped, edited, and published by the Geological Survey as part of the Department of the Interior program for the development of the Missouri River Basin Control by USGS and USC&GS
Topography from aerial photographs by Kelsch Plotter methods
Aerial photographs taken 1949. Field check 1952
Polyconic projection. 1927 North American datum; 10,000-foot grid based on Wyoming coordinate system, west central zone
Dashed land lines indicate approximate locations

TRUE NORTH
MAGNETIC NORTH
APPROXIMATE MEAN DECLINATION, 1952



CONTOUR INTERVAL 20 FEET
DATUM IS MEAN SEA LEVEL



ROAD CLASSIFICATION
Heavy-duty 4 LANE 16 LANE Light-duty
Medium-duty 4 LANE 16 LANE Unimproved dirt
U. S. Route State Route

THIS MAP COMPLIES WITH NATIONAL MAP ACCURACY STANDARDS
FOR SALE BY U. S. GEOLOGICAL SURVEY, FEDERAL CENTER, DENVER, COLORADO OR WASHINGTON 25, D. C.
A FOLDER DESCRIBING TOPOGRAPHIC MAPS AND SYMBOLS IS AVAILABLE ON REQUEST

U. S. G. S.
FILE COPY
Inspection and Editing

LOVE RANCH, WYO.
N4252.5-W10737.5/7.5
1952

RETURN TO:
USGS AND HISTORICAL MAP ARCHIVES

JAN 11 1954