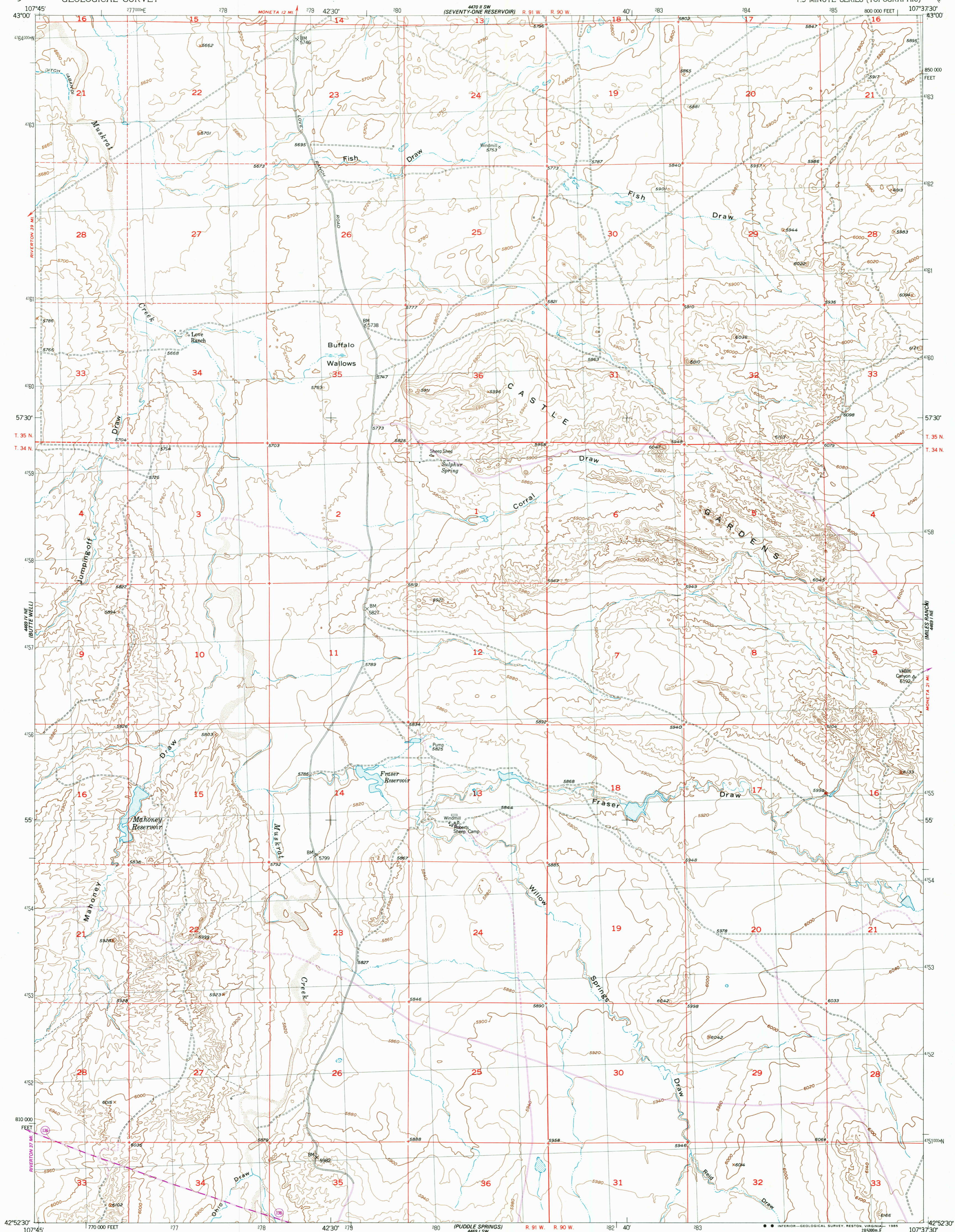


UNITED STATES  
DEPARTMENT OF THE INTERIOR  
GEOLOGICAL SURVEY

LOVE RANCH QUADRANGLE  
WYOMING-FREMONT CO.  
7.5 MINUTE SERIES (TOPOGRAPHIC)

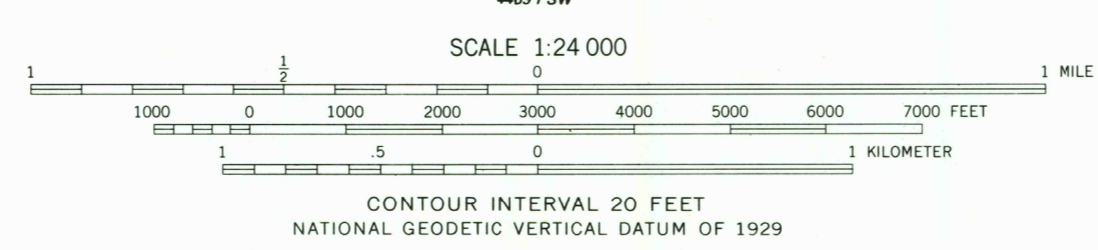
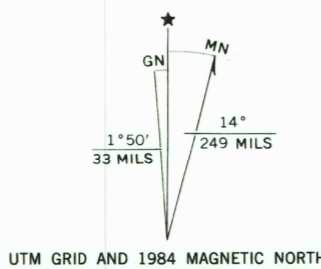


Mapped, edited, and published by the Geological Survey  
as part of the Department of the Interior program  
for the development of the Missouri River Basin  
Control by USGS and NOS/NOAA

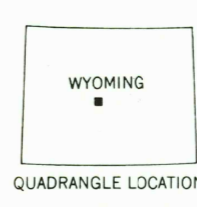
Topography from aerial photographs by Kelsh Plotter methods  
Aerial photographs taken 1949. Field check 1952  
Polyconic projection. 1927 North American Datum  
10,000-foot grid based on Wyoming coordinate system,  
west central zone

Dashed land lines indicate approximate locations  
1000-meter Universal Transverse Mercator grid, zone 13

To place on the predicted North American Datum 1983  
move the projection lines 8 meters north and  
53 meters east as shown by dashed corner ticks



THIS MAP COMPLIES WITH NATIONAL MAP ACCURACY STANDARDS  
FOR SALE BY U. S. GEOLOGICAL SURVEY, DENVER, COLORADO 80225, OR RESTON, VIRGINIA 22092  
A FOLDER DESCRIBING TOPOGRAPHIC MAPS AND SYMBOLS IS AVAILABLE ON REQUEST



ROAD CLASSIFICATION  
Heavy-duty 4 LANE 16 LANE Light-duty  
Medium-duty 4 LANE 16 LANE Unimproved dirt  
U. S. Route State Route

LOVE RANCH, WYO.  
42107-H6-TF-024

1952  
PHOTOREVISED 1984  
DMA 4469 I NW-SERIES 7874

Revisions shown in purple compiled  
from aerial photographs taken 1980  
and other source data. This information  
not field checked. Map edited 1984