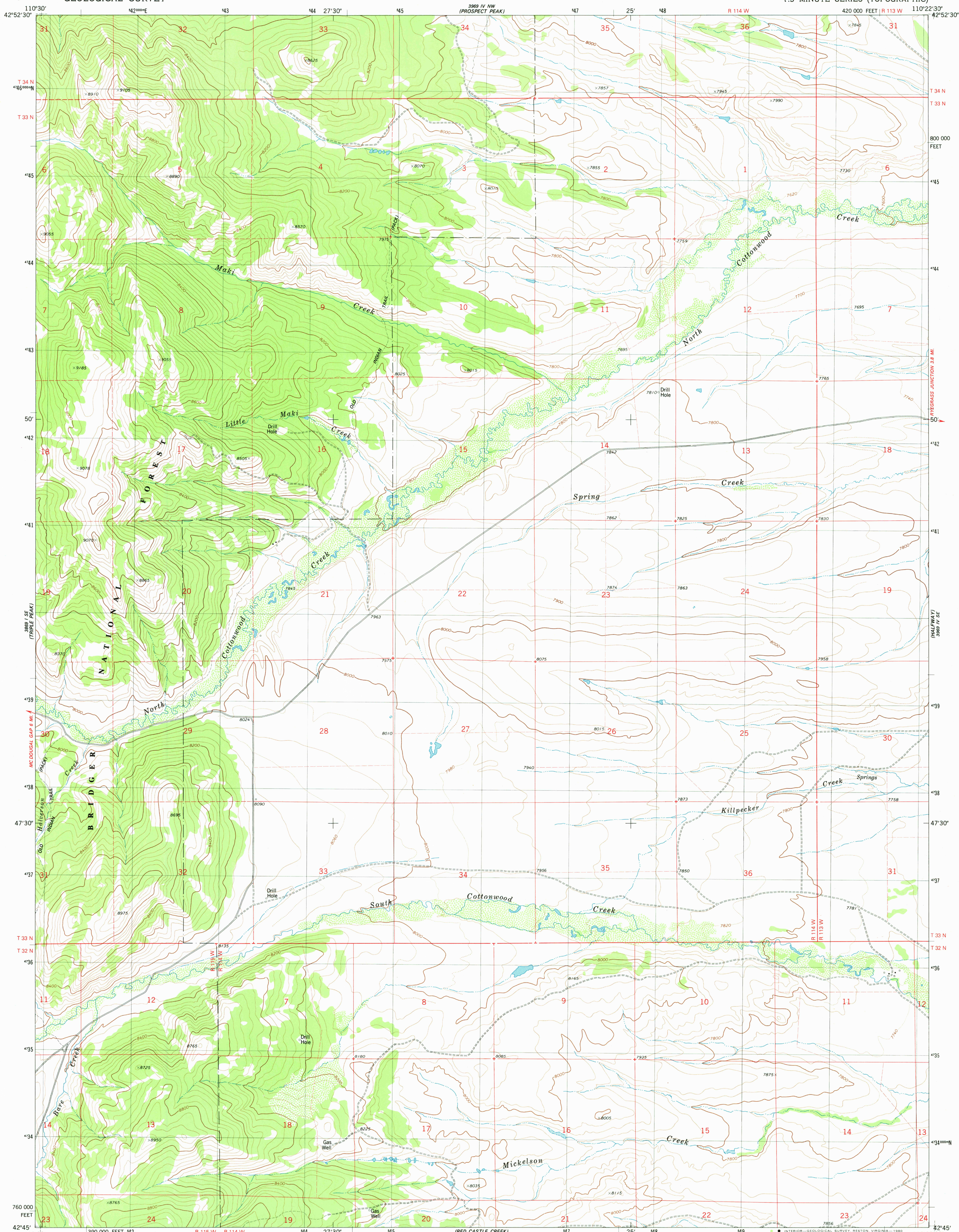
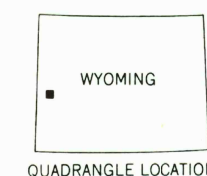
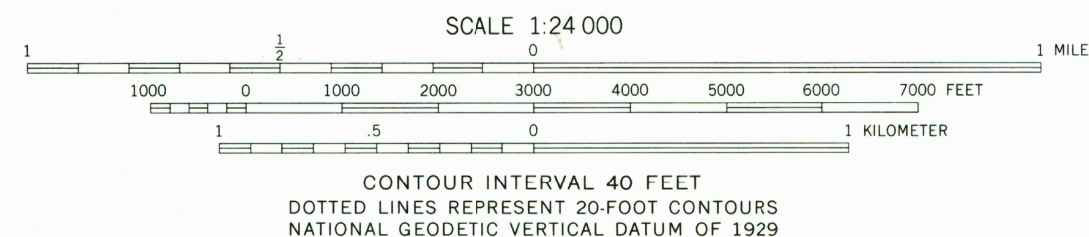
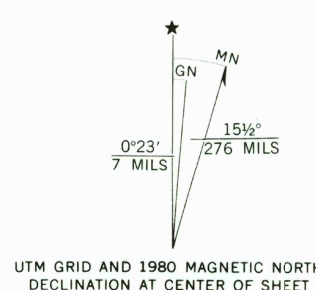


UNITED STATES  
DEPARTMENT OF THE INTERIOR  
GEOLOGICAL SURVEY

MAKI CREEK QUADRANGLE  
WYOMING—SUBLETTE CO.  
7.5 MINUTE SERIES (TOPOGRAPHIC)



Mapped, edited, and published by the Geological Survey  
Control by USGS and NOS/NOAA  
Topography by photogrammetric methods from aerial photographs  
taken 1973. Field checked 1974. Map edited 1980  
Projection and 10,000-foot grid ticks, Wyoming  
coordinate system, west zone (transverse Mercator)  
1000-meter Universal Transverse Mercator grid, zone 12  
1927 North American datum  
To place on the predicted North American Datum 1983  
move the projection lines 11 meters north and  
61 meters east as shown by dashed corner ticks  
Fine red dashed lines indicate selected fence lines  
There may be private inholdings within the boundaries of the  
National or State reservations shown on this map



ROAD CLASSIFICATION  
Primary highway, hard surface  
Secondary highway, hard surface  
Light-duty road, hard or improved surface  
Unimproved road  
Interstate Route  
U. S. Route  
State Route

MAKI CREEK, WYO.  
N4245—W11022.5/7.5  
1980

DMA 3969 IV SW—SERIES V874

RETURN TO:  
USGS AND HISTORICAL MAP ARCHIVES

JUL 7 1982

1/200