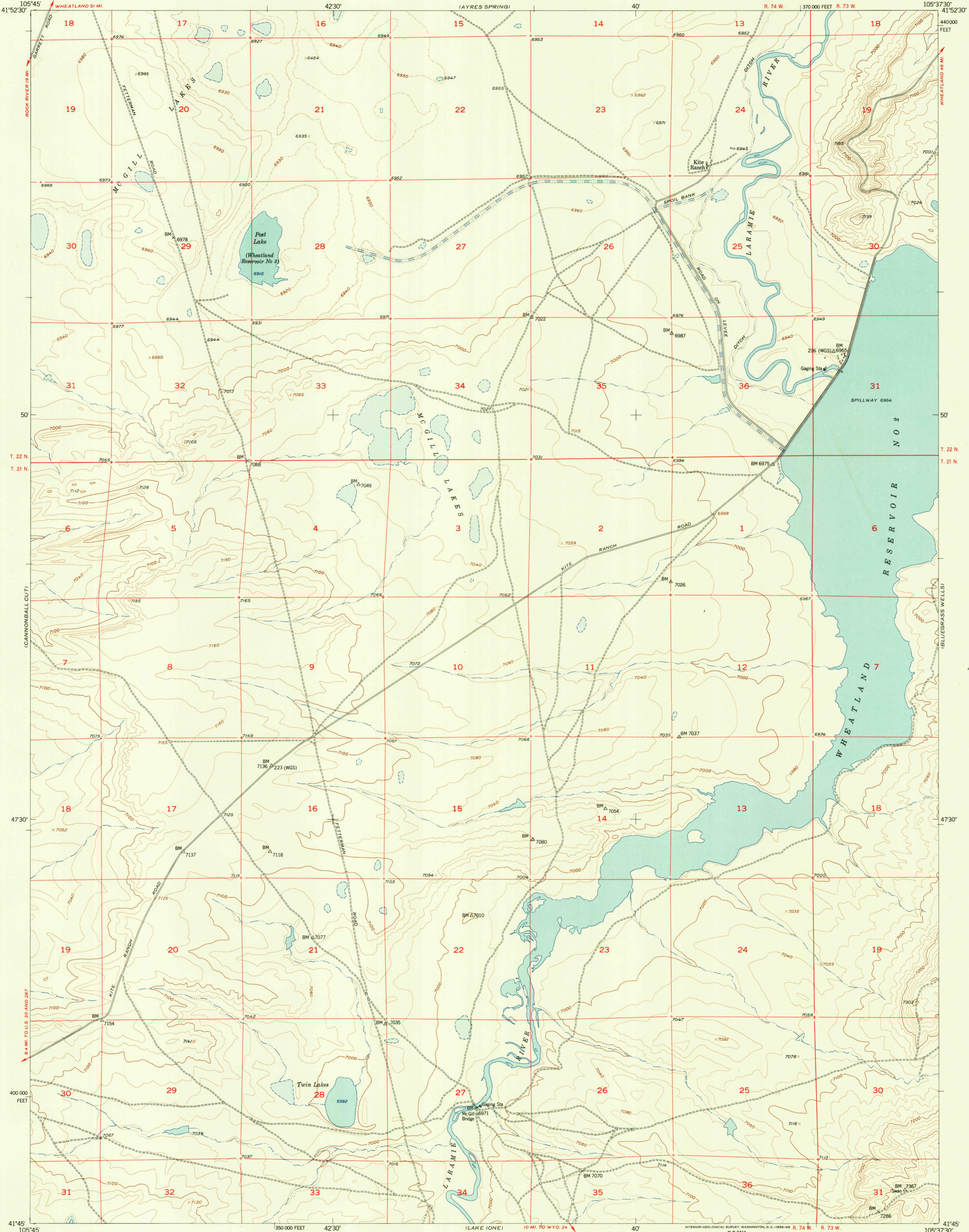


UNITED STATES
DEPARTMENT OF THE INTERIOR
GEOLOGICAL SURVEY

MC GILL LAKES QUADRANGLE
WYOMING-ALBANY CO.
7.5 MINUTE SERIES (TOPOGRAPHIC)



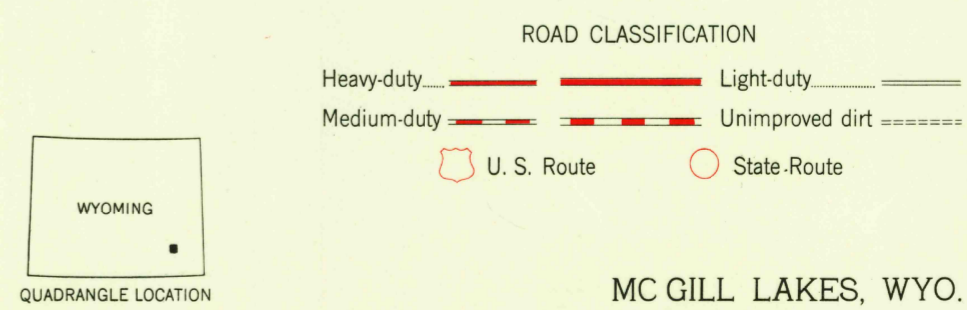
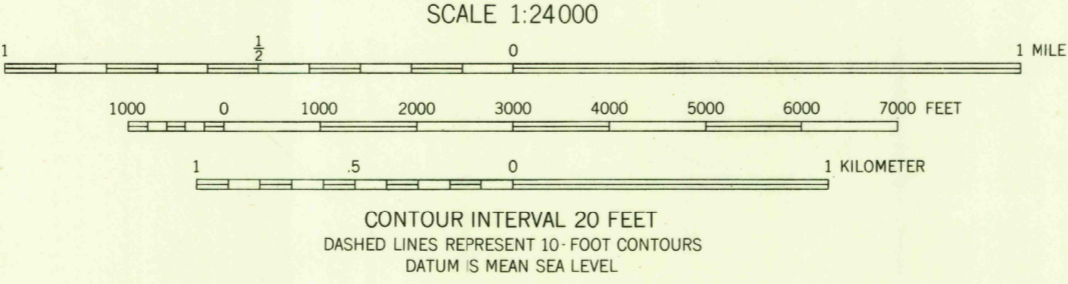
U.S.G.S.
FILE COPY
TOPOGRAPHIC DIVISION

RETURN TO:
U.S.G.S. HISTORICAL MAP ARCHIVES

U.S.G.S.
FILE COPY
TOPOGRAPHIC DIVISION

Mapped, edited, and published by the Geological Survey
as part of the Department of the Interior program
for the development of the Missouri River Basin
Control by USGS and USC&GS
Topography from aerial photographs by multiplex methods
and by planetable surveys 1955. Aerial photographs taken 1947
Polyconic projection. 1927 North American datum
10,000-foot grid based on Wyoming coordinate system,
east zone
Unchecked elevations are shown in brown

TRUE NORTH
MAGNETIC NORTH
APPROXIMATE MEAN
DECLINATION, 1955



MC GILL LAKES, WYO.
N4145-W10537.5/7.5

1955

THIS MAP COMPLIES WITH NATIONAL MAP ACCURACY STANDARDS
FOR SALE BY U.S. GEOLOGICAL SURVEY, FEDERAL CENTER, DENVER 2, COLORADO OR WASHINGTON 25, D.C.
A FOLDER DESCRIBING TOPOGRAPHIC MAPS AND SYMBOLS IS AVAILABLE ON REQUEST

SEP 2 1955