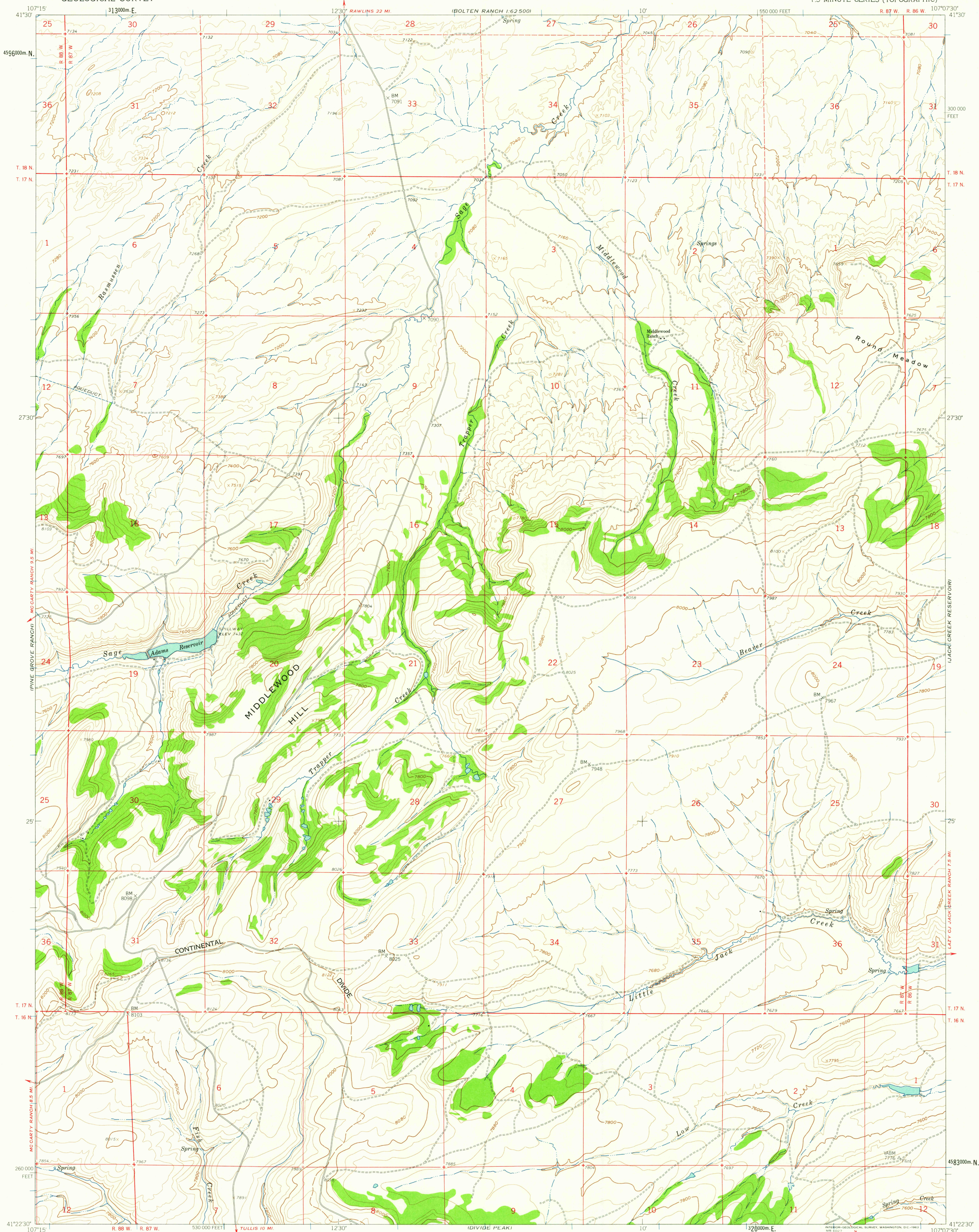


UNITED STATES
DEPARTMENT OF THE INTERIOR
GEOLOGICAL SURVEY

MIDDLEWOOD HILL QUADRANGLE
WYOMING-CARBON CO.
7.5 MINUTE SERIES (TOPOGRAPHIC)



Mapped, edited, and published by the Geological Survey as part of the Department of the Interior program for the development of the Missouri River Basin

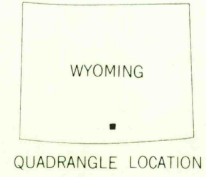
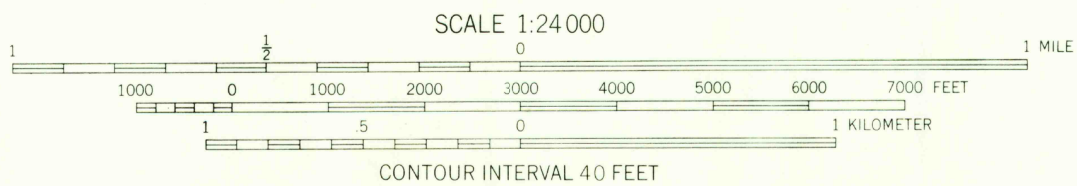
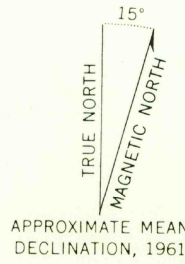
Control by USGS and USC&GS

Topography by photogrammetric methods from aerial photographs taken 1957. Field checked 1961

Polycyclic projection. 1927 North American datum 10,000-foot grid based on Wyoming coordinate system, east central zone

1000 meter Universal Transverse Mercator grid ticks, zone 13, shown in blue

Fine red dashed lines indicate selected fence and field lines where generally visible on aerial photographs. This information is unchecked



ROAD CLASSIFICATION

Light-duty ————— Unimproved dirt =

MIDDLEWOOD HILL, WYO.
N4122 5-W10707 5/7 5

1961

RETURN TO:
USGS AND HISTORICAL MAP ARCHIVES

MAR 19 1963