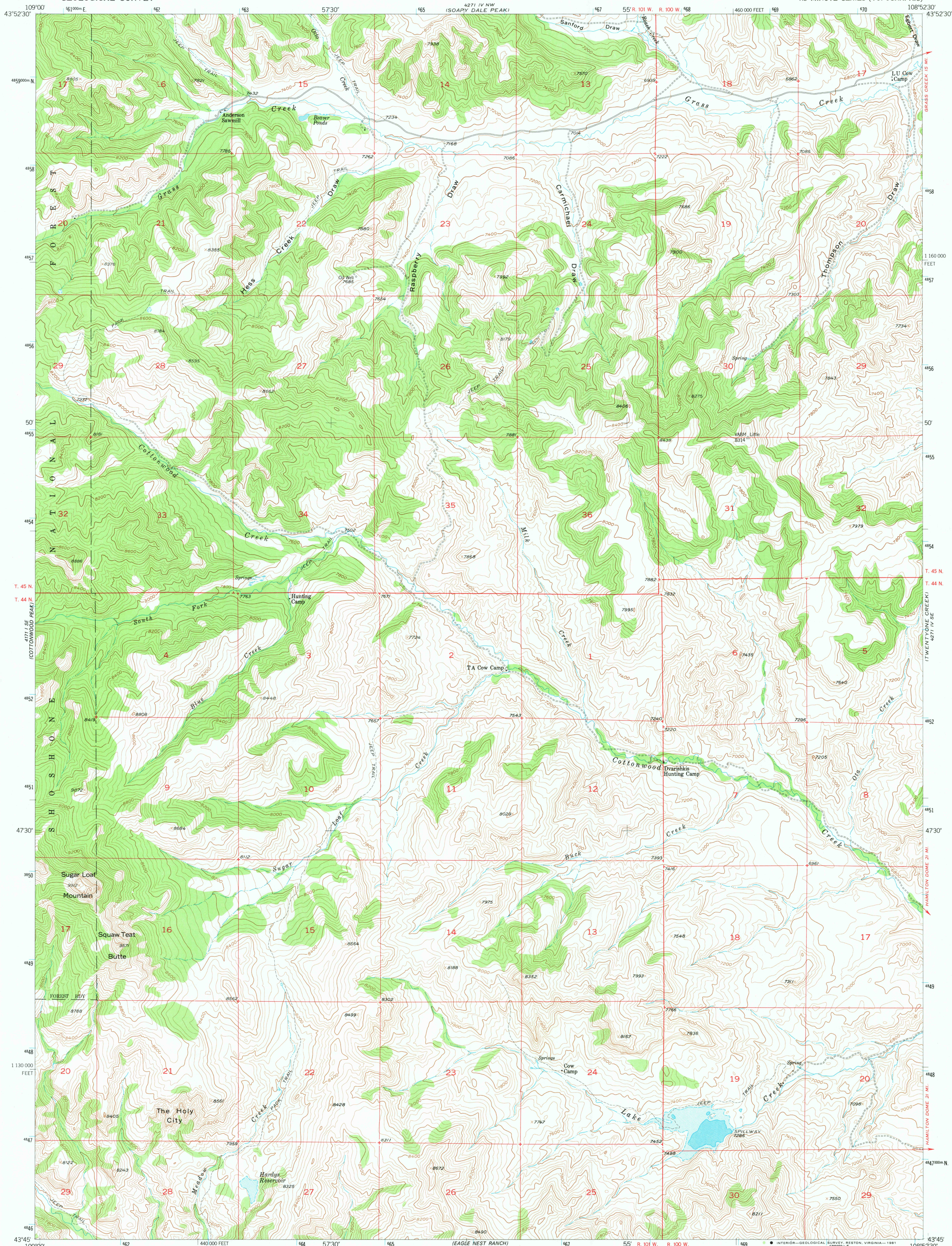


UNITED STATES
DEPARTMENT OF THE INTERIOR
GEOLOGICAL SURVEY

MILK CREEK QUADRANGLE
WYOMING—HOT SPRINGS CO.
7.5 MINUTE SERIES (TOPOGRAPHIC)



Mapped, edited, and published by the Geological Survey
as part of the Department of the Interior program
for the development of the Missouri River Easin

Control by USGS and USC&GS

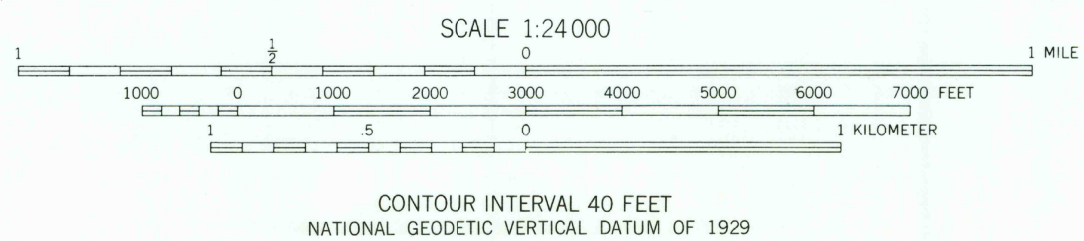
Topography from aerial photographs by multiplex methods
Aerial photographs taken 1953. Field check 1956

Polyconic projection. 1927 North American datum
10,000-foot grid based on Wyoming coordinate system,
west central zone
1000-meter Universal Transverse Mercator grid ticks,
zone 12, shown in blue

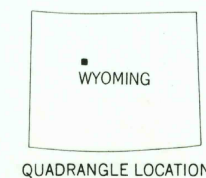
Certain land lines unsurveyed in T. 44 N. R. 101 W.

To place on the predicted North American Datum 1983
move the projection lines 9 meters north and
56 meters east as shown by dashed corner ticks

There may be private inholdings within boundaries of
the National or State reservations shown on this map



THIS MAP COMPLIES WITH NATIONAL MAP ACCURACY STANDARDS
FOR SALE BY U. S. GEOLOGICAL SURVEY, DENVER, COLORADO 80225, OR RESTON, VIRGINIA 22092
A FOLDER DESCRIBING TOPOGRAPHIC MAPS AND SYMBOLS IS AVAILABLE ON REQUEST



QUADRANGLE LOCATION

ROAD CLASSIFICATION
Light-duty Unimproved dirt -----

MILK CREEK, WYO.
N4345—W10852.5/7.5
1956

PHOTOINSPECTED 1977
DMA 4271 IV SW—SERIES V874