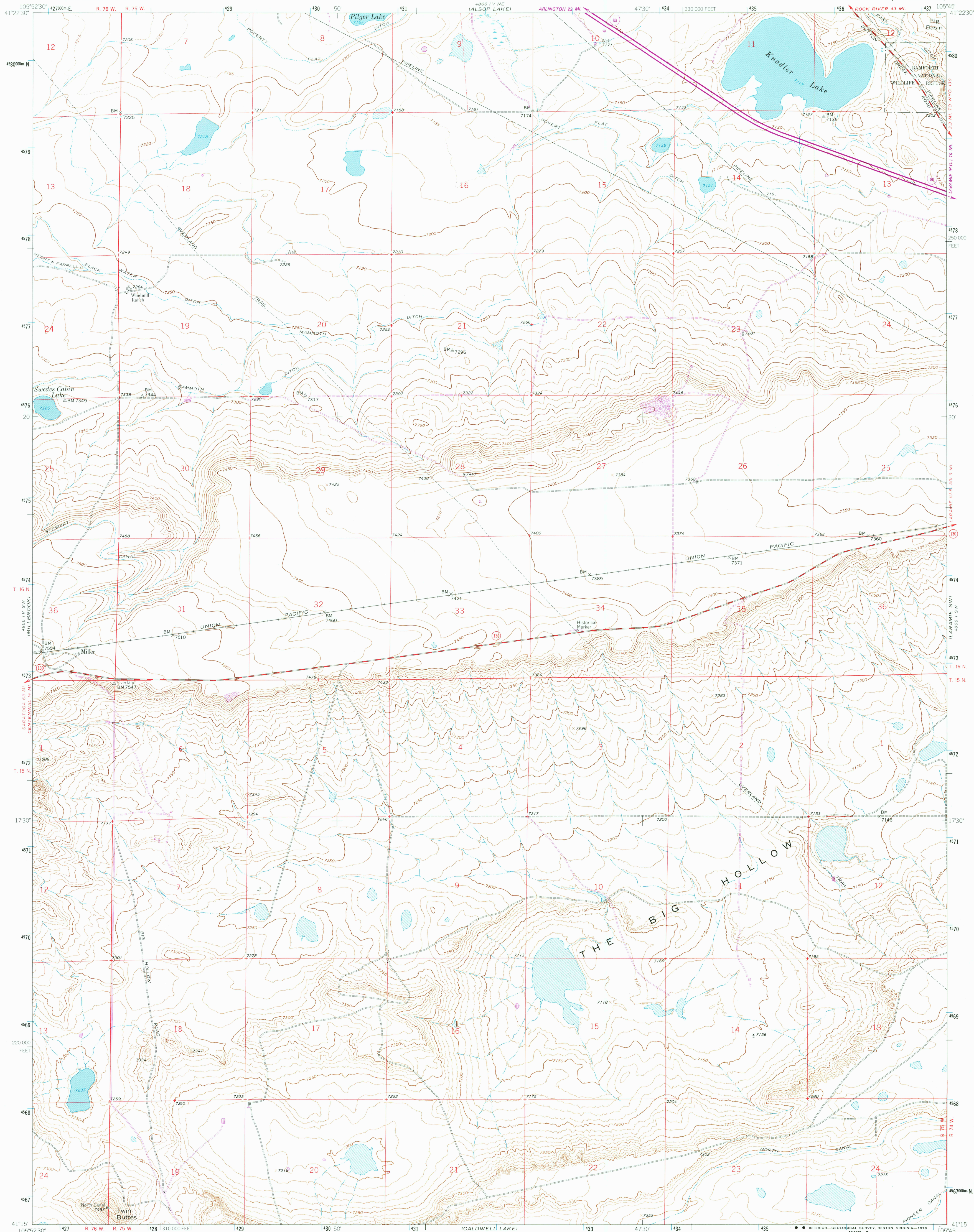


UNITED STATES
DEPARTMENT OF THE INTERIOR
GEOLOGICAL SURVEY

MILLER QUADRANGLE
WYOMING-ALBANY CO.
7.5 MINUTE SERIES (TOPOGRAPHIC)



Mapped, edited, and published by the Geological Survey as part of the Department of the Interior program for the development of the Missouri River Basin

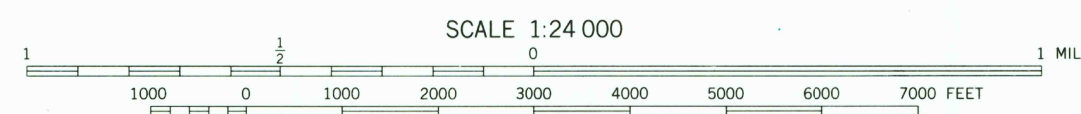
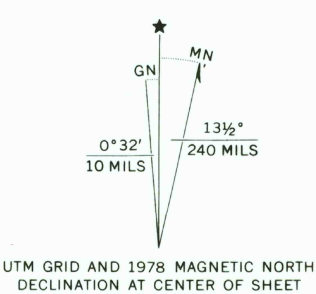
Control by USGS, NOS/NOAA and Wyoming Geodetic Survey

Topography by photogrammetric methods from aerial photographs taken 1961. Field checked 1962

Polyconic projection. 1927 North American datum. 10,000-foot grid based on Wyoming coordinate system, east zone 1000-meter Universal Transverse Mercator grid ticks, zone 13, shown in blue

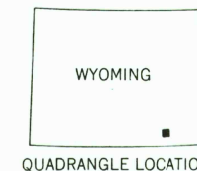
Fine red dashed lines indicate selected fence lines

Revisions shown in purple compiled from aerial photographs taken 1976. Map edited 1978. This information not field checked



CONTOUR INTERVAL 10 FEET
DOTTED LINES REPRESENT 5-FOOT CONTOURS
NATIONAL GEODETIC VERTICAL DATUM OF 1929

THIS MAP COMPLIES WITH NATIONAL MAP ACCURACY STANDARDS
FOR SALE BY U.S. GEOLOGICAL SURVEY, DENVER, COLORADO 80225, OR RESTON, VIRGINIA 22092
A FOLDER DESCRIBING TOPOGRAPHIC MAPS AND SYMBOLS IS AVAILABLE ON REQUEST



ROAD CLASSIFICATION
Primary highway, hard surface
Secondary highway, hard surface
Interstate Route
U.S. Route
State Route
Light-duty road, hard or improved surface
Unimproved road

USGS
Historical File
Topographic Division

MILLER, WYO.
N4115-W10545/7 5

1962
PHOTOREVISED 1978
AMS 4866 IV SE-SERIES V874

DEC 18 1978
3550

RETURN TO:
USGS AND HISTORICAL MAP ARCHIVES