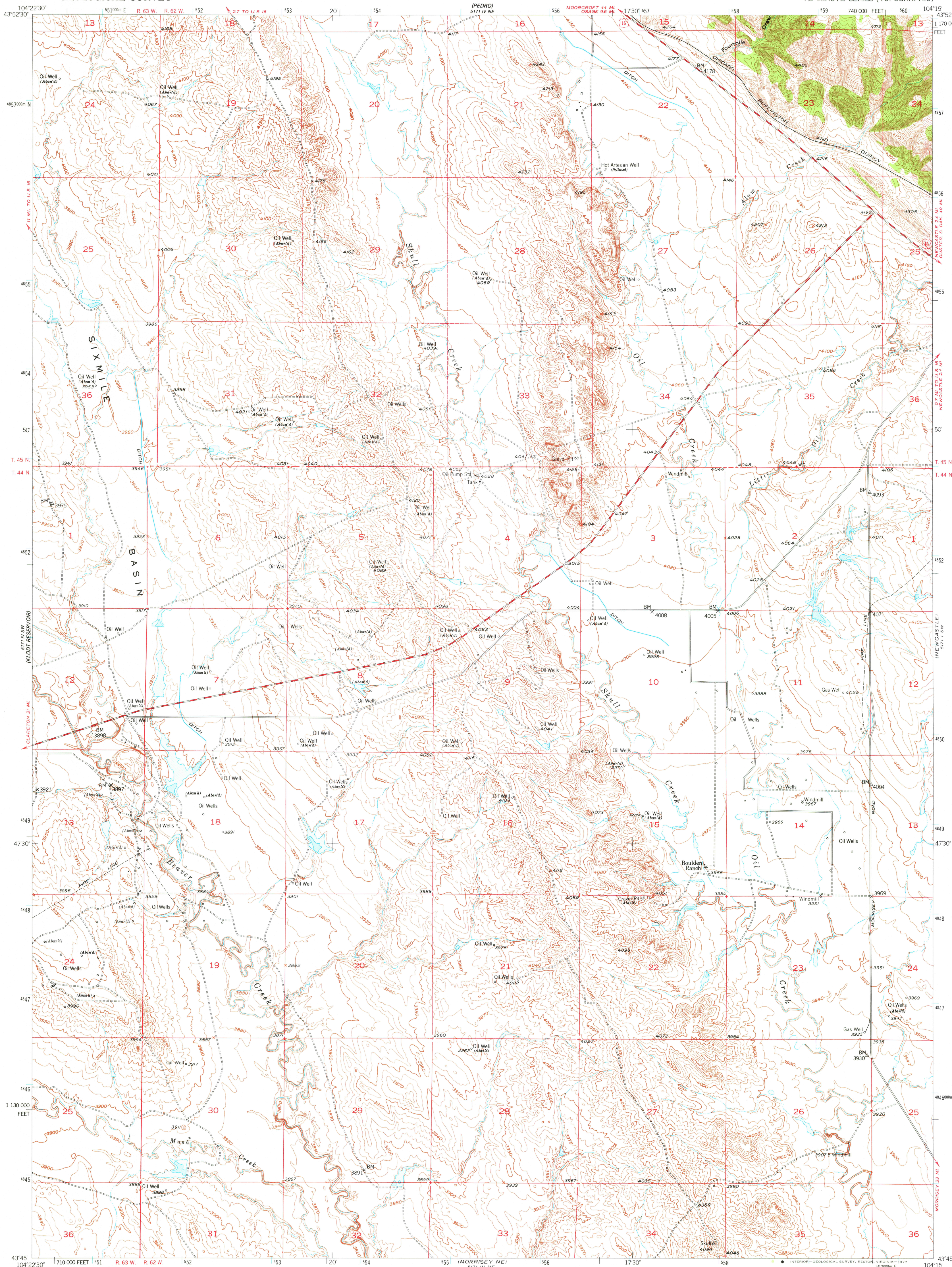


OSAGE SE
5711 IV NE

UNITED STATES
DEPARTMENT OF THE INTERIOR
GEOLOGICAL SURVEY

OSAGE SE QUADRANGLE
WYOMING-WESTON CO.
7.5 MINUTE SERIES (TOPOGRAPHIC)

NEWCASTLE
1:6,200
5711 IV



Mapped, edited, and published by the Geological Survey as part of the Department of the Interior program for the development of the Missouri River Basin

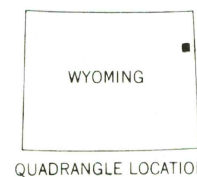
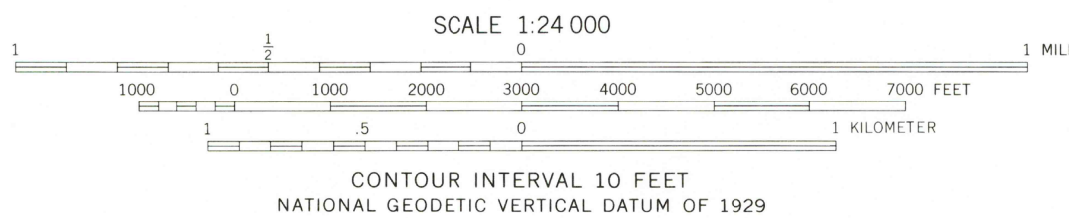
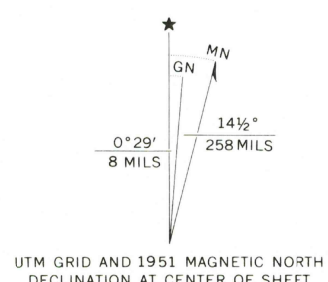
Control by USGS and USC&GS

Topography from aerial photographs by multiplex methods by Tennessee Valley Authority. Aerial photographs taken 1948. Field check 1951

Polyconic projection. 1927 North American datum 10,000-foot grid based on Wyoming coordinate system, east zone

1000-meter Universal Transverse Mercator grid ticks, zone 13, shown in blue

Dashed land lines indicate approximate locations



ROAD CLASSIFICATION

Heavy-duty 4 LANE 16 LANE Light-duty 4 LANE 16 LANE

Medium-duty 4 LANE 16 LANE Unimproved dirt

U.S. Route State Route

THIS MAP COMPLIES WITH NATIONAL MAP ACCURACY STANDARDS
FOR SALE BY U.S. GEOLOGICAL SURVEY, DENVER, COLORADO 80225, OR RESTON, VIRGINIA 22092
A FOLDER DESCRIBING TOPOGRAPHIC MAPS AND SYMBOLS IS AVAILABLE ON REQUEST

USGS
Historical File
Topographic Division

OSAGE SE, WYO.
N4345-W10415/7.5

1951

AMS 5711 IV SE-SERIES V874

AUG 0 1 1977

USGS AND HISTORICAL MAP ARCHIVES