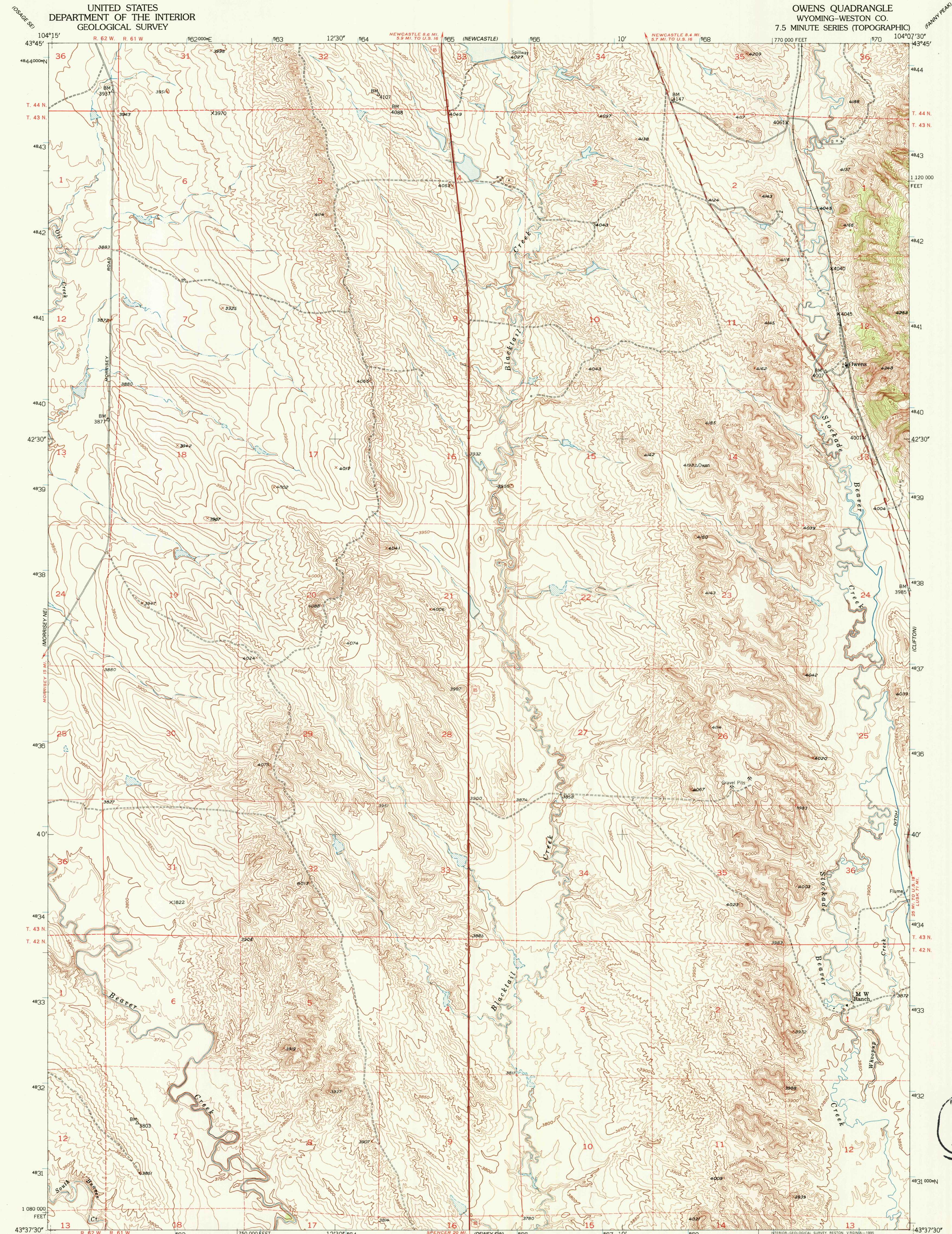
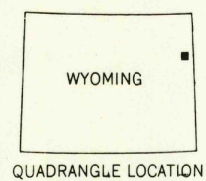
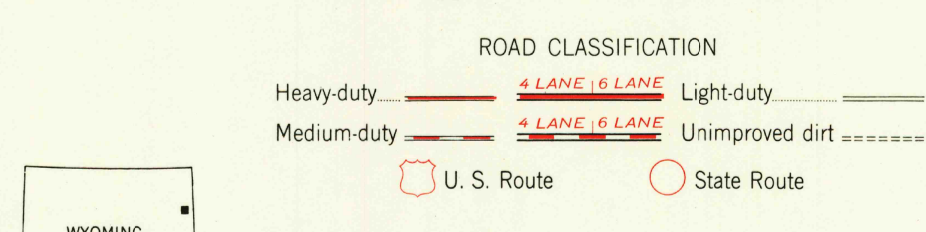
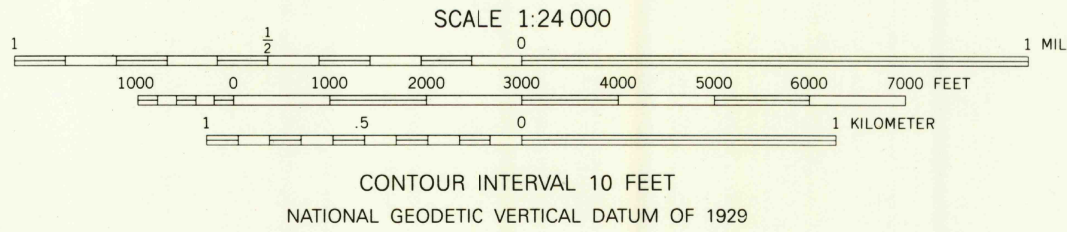
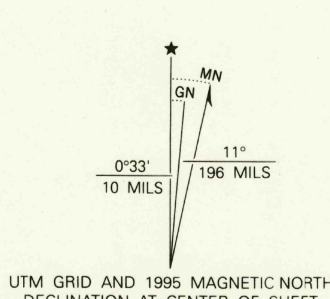


UNITED STATES
DEPARTMENT OF THE INTERIOR
GEOLOGICAL SURVEY

OWENS QUADRANGLE
WYOMING-WESTON CO.
7.5 MINUTE SERIES (TOPOGRAPHIC)



Produced by the United States Geological Survey as part of the Department of the Interior program for the development of the Missouri River Basin
Control by USGS and NOS/NOAA
Compiled from aerial photographs taken 1948 by Tennessee Valley Authority. Field checked 1951
North American Datum of 1927 (NAD 27). Projection and 10000-foot ticks: Wyoming Coordinate System, east zone (Transverse Mercator)
Blue 1000-meter Universal Transverse Mercator ticks, zone 13
North American Datum of 1983 (NAD 83) is shown by dashed corner ticks. The values of the shift between NAD 27 and NAD 83 for 7.5-minute intersections are obtainable from National Geodetic Survey NADCON software



OWENS, WY
43104-F2-7F-024

1951

DMA 5171 II NW-SERIES V874

USGS AND HISTORICAL
JUL 31 1995
FILE COPY

