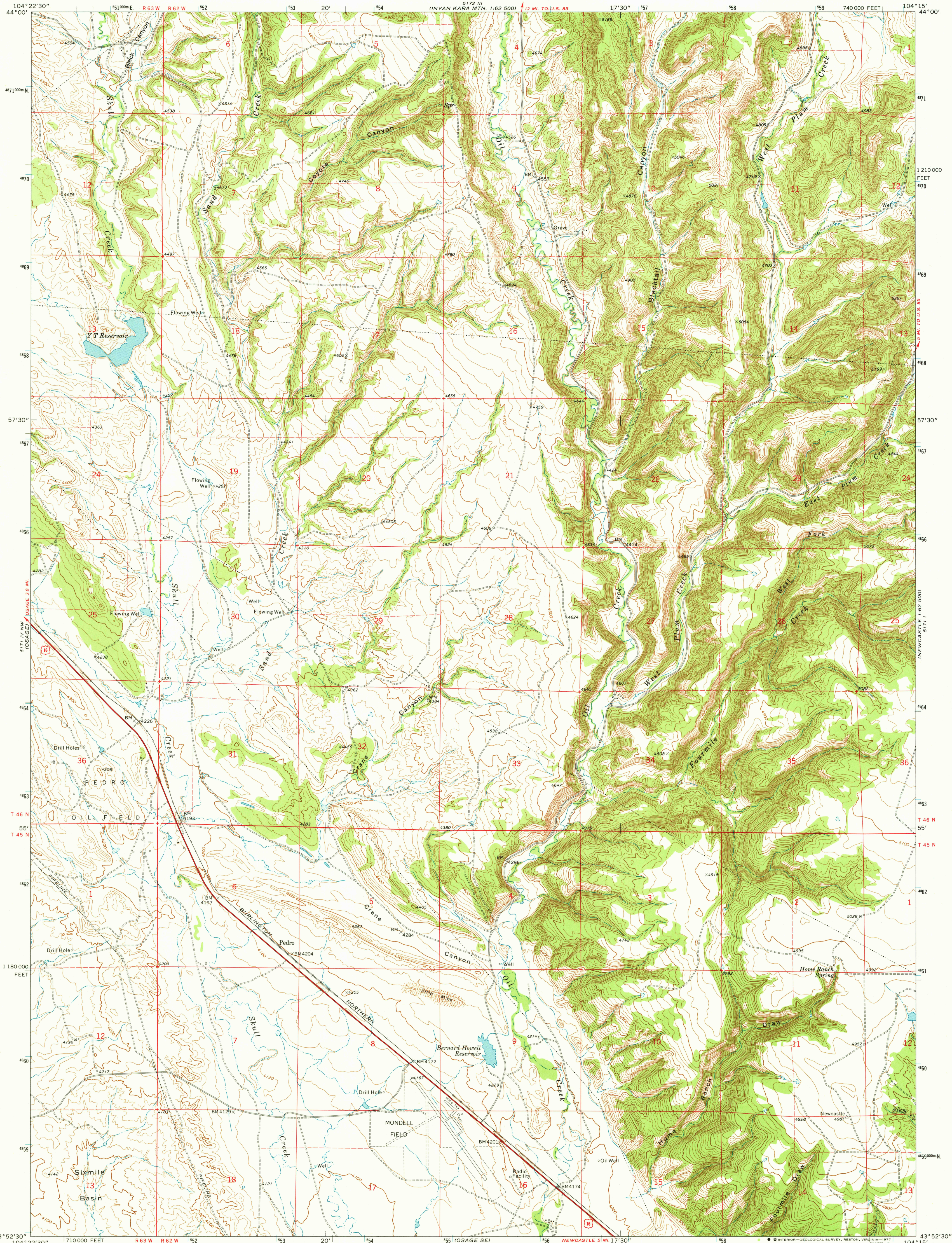
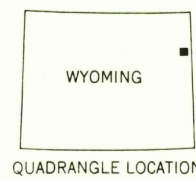
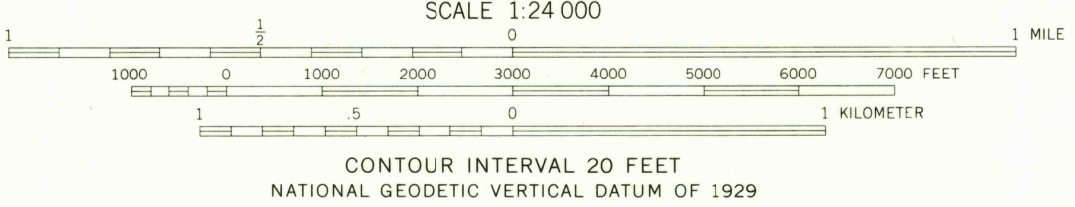
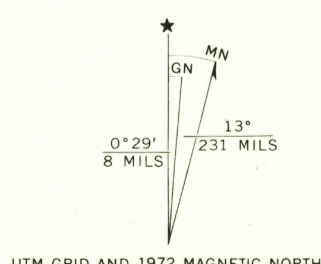


5172 II
FOUR CORNERS
1:62,500



Mapped, edited, and published by the Geological Survey
Control by USGS and NOS/NOAA
Topography by photogrammetric methods from aerial
photographs taken 1970. Field checked 1972
Projection and 10,000-foot grid ticks: Wyoming
coordinate system, east zone (transverse Mercator)
1000-meter Universal Transverse Mercator grid ticks,
zone 13, shown in blue. 1927 North American datum
Fine red dashed lines indicate selected fence lines



ROAD CLASSIFICATION
Primary highway, hard surface
Secondary highway, hard surface
Unimproved road
Light-duty road, hard or improved surface
Unimproved road
Interstate Route
U. S. Route
State Route

USGS
Historical File
Topographic Division

PEDRO, WYO.
N4352.5—W10415/7.5
1972

AMS 5171 IV NE—SERIES V874

THIS MAP COMPLIES WITH NATIONAL MAP ACCURACY STANDARDS
FOR SALE BY U.S. GEOLOGICAL SURVEY, DENVER, COLORADO 80225, OR RESTON, VIRGINIA 22092
A FOLDER DESCRIBING TOPOGRAPHIC MAPS AND SYMBOLS IS AVAILABLE ON REQUEST

2800
AUG 05 1977