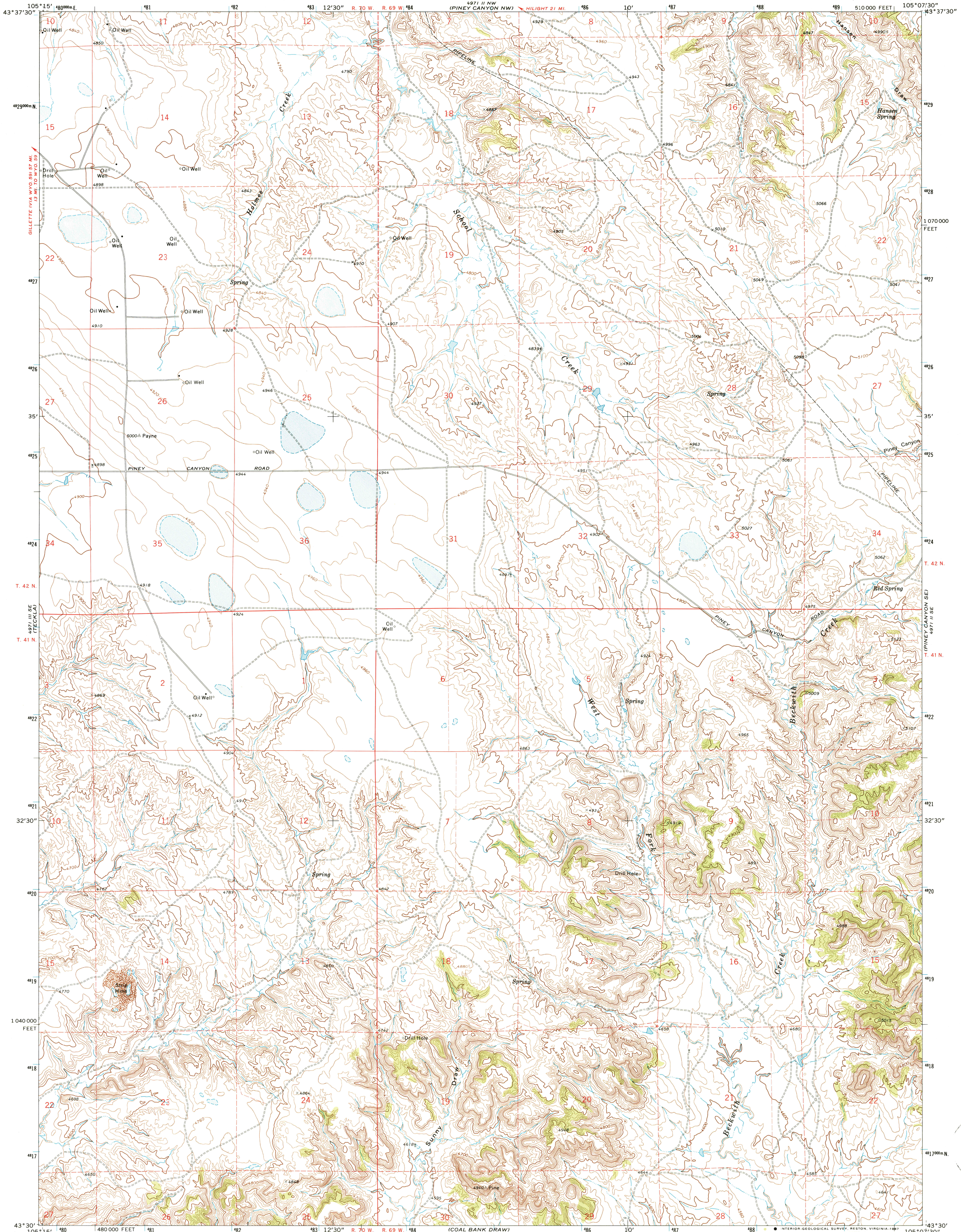


UNITED STATES
DEPARTMENT OF THE INTERIOR
GEOLOGICAL SURVEY

PINEY CANYON SW QUADRANGLE
WYOMING—CAMPBELL CO.
7.5 MINUTE SERIES (TOPOGRAPHIC)



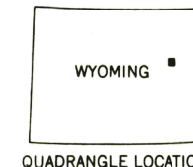
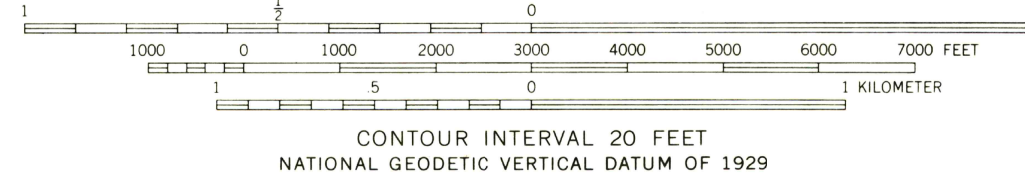
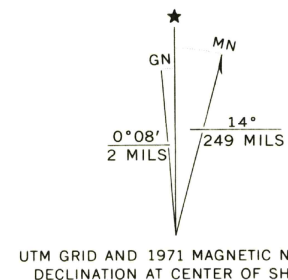
Mapped, edited, and published by the Geological Survey

Control by USGS and USC&GS

Topography by photogrammetric methods from aerial photographs taken 1970. Field checked 1971

Projection and 10,000-foot grid ticks: Wyoming coordinate system, east zone (transverse Mercator) 1000-meter Universal Transverse Mercator grid ticks, zone 13, shown in blue. 1927 North American Datum

Fine red dashed lines indicate selected fence lines
To place on the predicted North American Datum 1983 move the projection lines 7 meters north and 46 meters east as shown by dashed corner ticks



ROAD CLASSIFICATION	
Primary highway, hard surface	Light-duty road, hard or improved surface
Secondary highway, hard surface	Unimproved road
Interstate Route	U. S. Route
	State Route

THIS MAP COMPLIES WITH NATIONAL MAP ACCURACY STANDARDS
FOR SALE BY U.S. GEOLOGICAL SURVEY, DENVER, COLORADO 80225, OR RESTON, VIRGINIA 22092
A FOLDER DESCRIBING TOPOGRAPHIC MAPS AND SYMBOLS IS AVAILABLE ON REQUEST

PINEY CANYON SW, WYO.
43105-E2-TF-024

1971

DMA 4971 II SW-SERIES V874

USGS NMD HISTORICAL MAP
APR 19 1988
REC'D FILE COPY