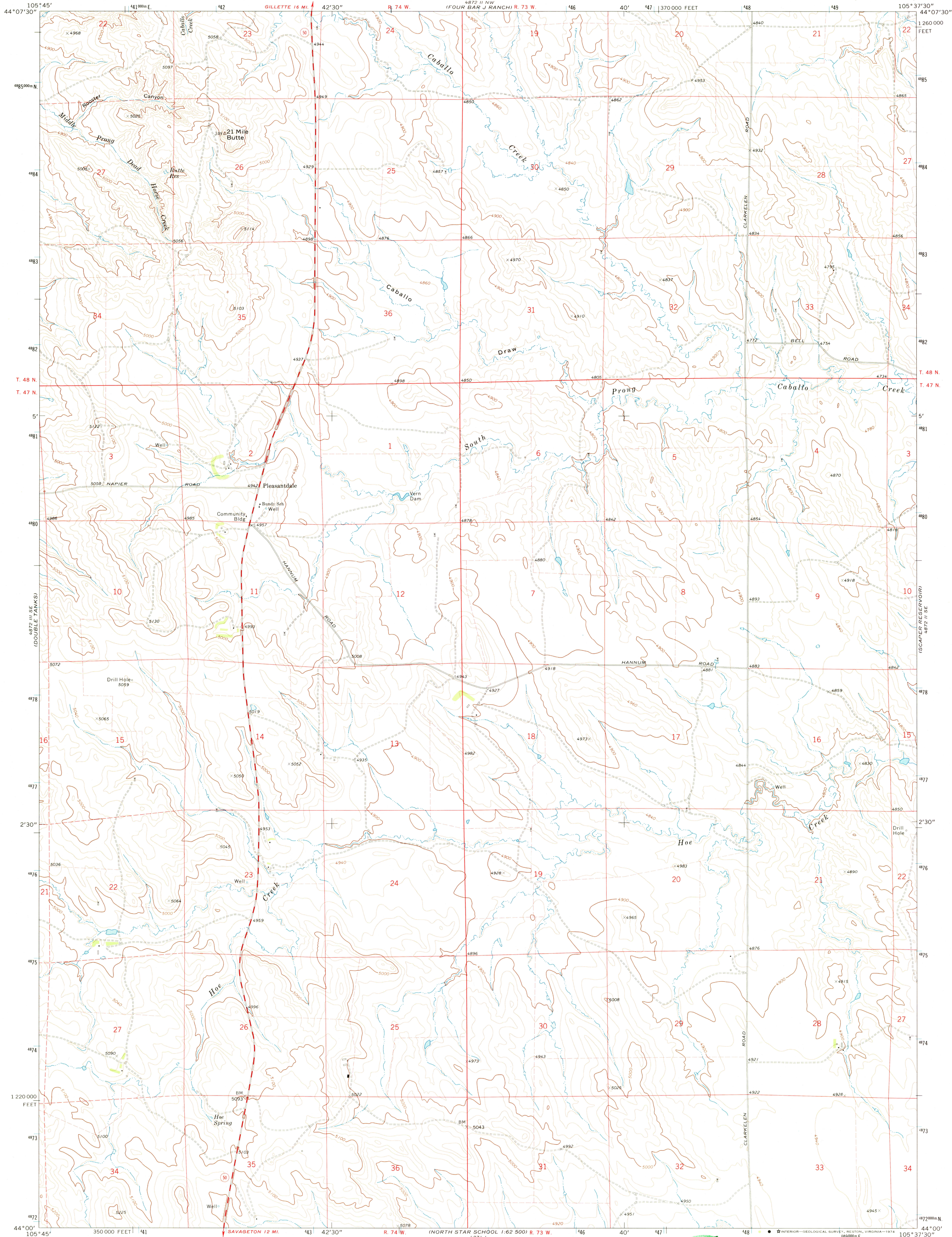
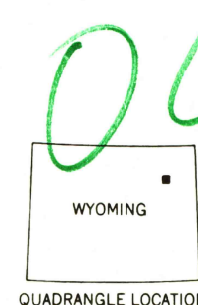
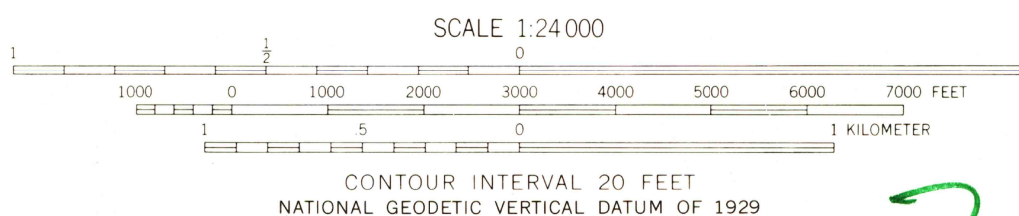
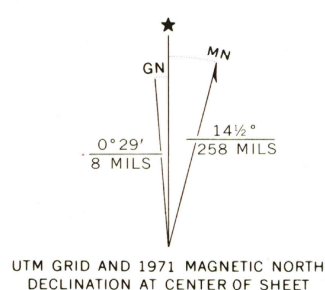


UNITED STATES  
DEPARTMENT OF THE INTERIOR  
GEOLOGICAL SURVEY

PLEASANTDALE QUADRANGLE  
WYOMING—CAMPBELL CO.  
7.5 MINUTE SERIES (TOPOGRAPHIC)



Mapped, edited, and published by the Geological Survey  
Control by USGS and USC&GS  
Topography by photogrammetric methods from aerial  
photographs taken 1970. Field checked 1971.  
Projection and 10,000-foot grid ticks: Wyoming  
coordinate system, east zone (transverse Mercator)  
1000-meter Universal Transverse Mercator grid ticks,  
zone 13, shown in blue. 1927 North American datum  
Fine red dashed lines indicate selected fence lines



ROAD CLASSIFICATION  
Primary highway, hard surface ——— Light-duty road, hard or improved surface ———  
Secondary highway, hard surface ——— Unimproved road ———  
Interstate Route ——— U. S. Route ——— State Route ———

USGS  
Historical File  
Topographic Division

PLEASANTDALE, WYO.  
N4400—W10537.5/7.5

1971

AMS 4872 II SW—SERIES V874

RETURN TO:  
USGS NHD HISTORICAL MAP ARCHIVES

NOV 08 1974